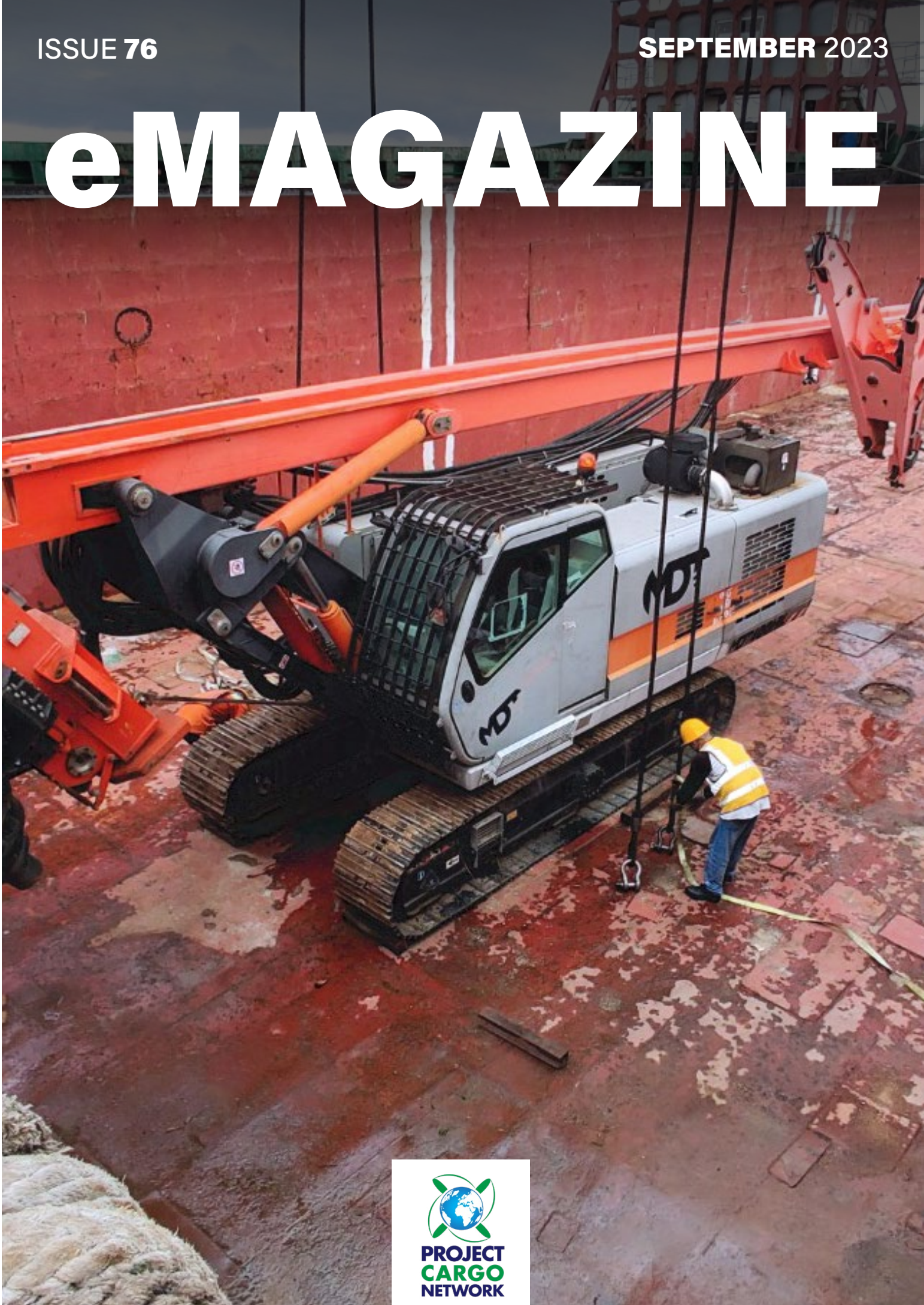


ISSUE 76

SEPTEMBER 2023

# eMAGAZINE





# PROJECT CARGO NETWORK MONTHLY NEWS

## ABOUT PCN

Since 2010, PCN has provided heavy lift and project cargo specialists access to a global network of agents who can handle their shipments, whilst working under strict Membership Rules. Our friendly and professional ISO 9001 & ISO 14001 organisation comprises of 360+ companies in 125+ countries. See our video library for more details.

## MEETING HUB

We have invested in a bespoke Meeting Hub where our Members can connect virtually using the platforms that have now become an essential part of daily life including Zoom, Google Meet, Skype, and WhatsApp. See our video library for more details.

Publisher: Project Cargo Network  
Website: [projectcargonetwork.com](http://projectcargonetwork.com)  
Online Training: [pcntraining.com](http://pcntraining.com)  
Meeting Hub: [pcnmeetinghub.com](http://pcnmeetinghub.com)  
Contact: [headoffice@projectcargonetwork.com](mailto:headoffice@projectcargonetwork.com)  
Tel: + 44 7305 092930

Cover: Almas Group Take Logistics to Another Level

Project Cargo Network cannot take responsibility for the opinions, statements and/or facts expressed in the stories, that are contained in this publication. Any views expressed are those of the individual quoted, and not necessarily those of the publisher. The publisher can accept no responsibility for any errors or omissions made, but will endeavour to amend any, that are brought to our attention, in a future issue.

Welcome to our monthly eMagazine, an official PCN publication which includes articles on Member's projects, the latest companies to join, reminders of membership tools and official updates.



Distributed to both our internal readership of 10,000+ staff worldwide and also accessible to the 5000+ visitors per month to our website. We also invite external companies to subscribe and currently over 500 industry executives engaged in energy, construction, shipping, and ancillary industries have asked to regularly receive a copy. Please feel free to subscribe and each issue will be delivered straight to your inbox.

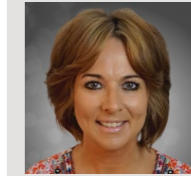
To see the very latest news, please see the News section of our website or [projectcargoblog.com](http://projectcargoblog.com).

We are delighted by our continued strong growth - scan this QR code to see our impressive association which has a global reach of over 125 countries. However, we are more impressed with the amount of business and projects that our members collaborate on. It is why we exist! We can't wait to see our friendly and professional global family at our 12th Annual Summit from 12-14 November in Thailand - see page 26.

Enjoy this issue.

Rachel Crawford FCILT  
PCN President/C.E.O.

## THE PCN TEAM



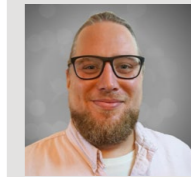
**PRESIDENT/C.E.O.**  
Rachel Crawford FCILT  
Email: [rachel@projectcargonetwork.com](mailto:rachel@projectcargonetwork.com)



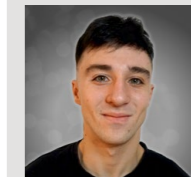
**OPERATIONS**  
Judith Mellet  
Email: [judith@projectcargonetwork.com](mailto:judith@projectcargonetwork.com)



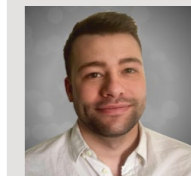
**OPERATIONS**  
Wendy Schuller  
Email: [wendy@projectcargonetwork.com](mailto:wendy@projectcargonetwork.com)



**RECRUITMENT**  
Sam Wilcox  
Email: [sam@projectcargonetwork.com](mailto:sam@projectcargonetwork.com)



**PUBLICATIONS**  
George Magee  
Email: [george@projectcargonetwork.com](mailto:george@projectcargonetwork.com)



**NEWS EDITOR**  
Tom Studley  
Email: [tom@projectcargonetwork.com](mailto:tom@projectcargonetwork.com)



# SHODESH IN BANGLADESH DELIVER HUGE BREAKBULK CONSIGNMENT

PCN Bangladesh members, **Shodesh Shipping & Logistic** recently successfully handled a huge breakbulk consignment for the RNPP construction project.

The cargo was carried on the vessel, MV. Liberty Harvest, arriving at Mongla Port and consisted of various construction parts, steel, tanks and equipment. The scope of work handled by Shodesh included port transit permissions, transportation from Mongla to Rooppur, unloading at site and customs clearance.

A total of **746 vehicles** were used to transport the cargo by road and complete the delivery from the port to project site.

- Total Gross Weight: **4,716tn**
- Total Units: **1,475**





# KGE DELIVER GANTRY CRANE TO KAZAKHSTAN

KGE Baltic recently handled the multimodal transport of a disassembled gantry crane from various locations in Europe to Altynkol in Kazakhstan, close to Chinese border.

The long beams measured **28m** long with a weight of **34tn**. The total transit time for the cargo was around 25 days including border crossings.



All cargo was successfully delivered to the final destination thanks to the **highly skilled and dedicated team** at KGE who provided complete daily updates and tracking which resulted in great feedback from their customer.

*KGE have completed another project with complete professionalism and customer satisfaction once again!*





# ALMAS GROUP TAKE LOGISTICS TO ANOTHER LEVEL

We are pleased to report **Almas Group Logistics** are new PCN members in **Iraq**. The company have three offices in **Erbil, Baghdad and Sulaymaniyah** and offer professional project cargo logistics, management and forwarding services.

Miran Khattab (Managing Director) comments; "Almas Group Logistics always invests our experience and time to fully understand the project requirements before designing a **tailored logistics plan**. Since 2009, we have been providing **innovative shipping and transportation services** with the ability to adapt to changes in the industry and come up with optimum solutions for every challenge. We take logistics to another level!"

The Almas Group Logistics team have the expertise to successfully handle any project cargo management and special operations as well as all procedures and required documentation. Our experience in **efficiently and effectively** handling logistics services has included the oil & gas, construction, factories & manufacturing, agriculture, power & energy and automotive sectors."

Some recent projects handled by Almas Group Logistics are photographed **here** including:

- Breakbulk shipment of 11 units of heavy equipment from the Port of Hong Kong to Umm Qasr, Iraq. The shipment totalled 1,319.98cbm / 438,000kg.
- A heavy generator & production line shipped from Mundra Port in India to Umm Qasr for a steel factory. The shipment totalled 40tn.
- Breakbulk shipment of 300tn of steel from Tianjin Port in China to Umm Qasr.
- Shipment of BOMAG machinery & equipment from China via Mersin Port, Turkiye. The shipment totalled 160tn and 8 x 40'HC were used.
- Trucks and machinery shipped from the USA to Umm Qasr totalling around 100tn.
- Breakbulk shipments of forklifts & heavy equipment spare parts from the USA & China via Mersin Port. The shipment totalled 100tn and 15 trucks were used for the final delivery.







## LOGISTICS PLUS HANDLE INDUSTRIAL HEAT EXCHANGERS TO TURKIYE

Logistics Plus, our members representing India, recently handled a project shipment involving industrial equipment from India to Turkiye. The company shipped bundles of industrial air-cooling heat exchangers, featuring dimensions of 13.0 (L) x 2.43 (W) x 1.90 (H) meters, and a weight of 16.7 tons for each bundle.



**This totalled approximately 800 CBM of cargo volume and 200 tons of weight!**

Each bundle was handled carefully with cargo safety being their top priority. The bundles were loaded and then stacked on 12 x 40' flatbeds, as Logistics Plus made sure that all four hooking points of the containers remained free for lifting and loading onto the vessel.

"Irrespective of bad weather conditions, and a heavy storm near the port of loading, our team successfully completed their operation well & in-time."



# MPK FREIGHT COMPLETE MOVE OF MOBILE CRANE TO LILONGWE

MPK Freight, our members from **Malawi**, recently completed a project cargo transport contracted by a usual client of the company's in the civil engineering and building/construction sectors.

The cargo involved a mobile crane, which was retrieved and loaded in **Johannesburg** before being cleared for export. MPK Freight delivered the crane by road - using a specialised lowbed trailer, as well as mechanical handling equipment - whilst covering import customs clearance into Malawi.

This mobile crane was delivered door-to-door, with its final destination in **Lilongwe**.

*"Much thanks to all our stakeholders for making this project a success."*



# FORTUNE INTERNATIONAL TRANSPORT MANAGE RAILWAY BOGIE DELIVERY

Fortune International Transport, our members from **Italy**, recently transported a railway bogie from its manufacturing site in the province of **Brescia**, to the river port of **Mantua**. The cargo weighed 115 tons and featured dimensions of 11.0 (L) x 7.0 (W) x 4.0 (H) meters. Fortune designated a specialised truck to move the railway bogie.

After arriving at the river port of Mantua, the company transferred the cargo onto a barge, which travelled from **Mantua** to **Marghera**.

In Marghera, the barge joined the ocean-going vessel which proceeded to hook the neck with the powerful cranes on-board, before placing everything in the hold.

Finally, the ship left to make its final journey into Asia.

*"This order was managed thanks to the supervision of Fortune International Transport."*





# EASTSHIP FACILITATES KEY TRANSPORTS FOR LANDMARK TUNNEL PROJECT



Eastship are pleased to announce their involvement in the **modernisation of the railway** between **Sighisoara** and **Brasov**; an upgrade which will cover an extensive 128 kilometer stretch!

The project includes:

- Rehabilitation of 3 stations, namely **Racos, Mateias, and Ormenis**
- Construction of 2 overpasses
- Development of 7 bridges
- Installation of ten culverts, facilitating water drainage and maintaining the integrity of the railway infrastructure
- Erection of three viaducts, offering elevated passages for trains, spanning challenging terrain and promoting a more seamless journey

At the core of this ambitious endeavour, though, are the construction of two tunnels measuring **five** and **seven kilometers** respectively.

To accomplish this feat, state-of-the-art Tunnel

Boring Machines (TBMs), affectionately called "cârțitele" or moles, have been deployed. These colossal machines are capable of advancing 15 meters per day, and will operate twenty-four hours a day, six days a week. This allows for a projection that the seven kilometer tunnel will be completed in **18-19 weeks**, and the five kilometer tunnel in **14-15 weeks**.

As a logistics partner for this project, Eastship played a pivotal role in transporting the massive machines to their designated locations. Despite the challenges posed by navigating winding mountain roads, the experienced Eastship team handled the transport - with some parts **exceeding 5.5 meters** in width - for over **500 kilometers**!

*"Once completed, the upgraded railway section between Sighisoara and Brasov will facilitate train speeds of up to 160 kilometers per hour, reducing travel time between the two tourist cities significantly. Presently, trains navigate this stretch at a modest pace of 40 kilometers per hour."*

White Label  
WORLD EXPO

OCTOBER  
11 & 12  
— 2023 —

MESSE  
FRANKFURT

FREE TICKETS  
WHITELABELWORLDEXPO.DE

EUROPE'S  
LEADING  
SHOW FOR  
ONLINE RETAIL  
& SELLERS

SOURCE IN  
DEMAND  
PRODUCTS

UNLOCK YOUR  
BUSINESS  
POTENTIAL

GAIN  
PROFOUND  
KNOWLEDGE

200  
INSPIRATIONAL  
SEMINARS

+ MUCH  
MORE!

350  
WORLD CLASS  
EXHIBITORS

PRODUCT  
SOURCING  
TRAIL

SCAN ME



@WhiteLabelExpo | #WhiteLabelEU | #WhiteLabelWorld



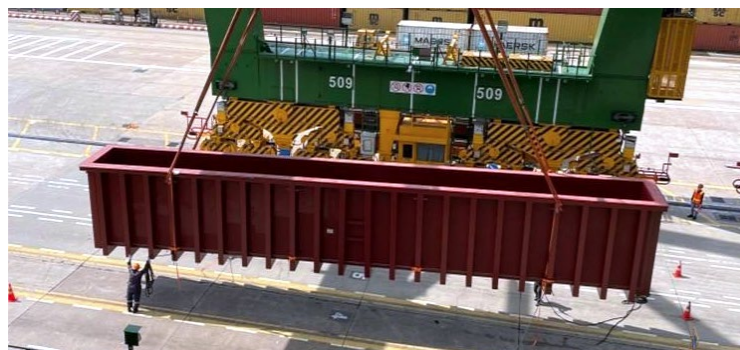
# GEBRÜDER WEISS COMPLETE TRANSPORT OF TANKS TO BRISBANE

Gebrüder Weiss, our members representing **Austria**, recently completed a challenging project which involved four breakbulk shipments.

The cargo involved ten tanks, each measuring **23.0 (H) x 4.6 (W) meters** with a total volume of **2,500 CBM**.

These tanks travelled on container vessels from Europe before undergoing transshipment via **Singapore** to **Brisbane, Australia**.

*"We planned this transport for more than a year, but once started it ran without any problems."*





# GO GAUGE PROJECTS TRANSPORT 95-TON HAMMERS TO SAUDI ARABIA

Go Gauge Projects, our members representing **Singapore**, are thrilled to announce the successful execution of a challenging breakbulk shipment. Their team were involved in a high-stakes project requiring the transportation of **95-ton hammers** from **Jurong, Singapore** to **Saudi Arabia**. The project encompassed a total of **34 packages** including SOC containers, each of which was expertly handled to ensure a seamless delivery.



The company covered a wide scope of work: from vessel chartering, ground lifting - including the utilisation of heavy lift mobile cranes - to heavy haulage, with the assistance of a professional escort.

*"Our team efficiently managed the port stevedoring activities, adding another layer of expertise to the project."*

One of the critical aspects of this operation was the strict timeline set by their client. They needed a heavy lift vessel with a shorter transit time, to which Go Gauge Logistics assisted them in finding the most suitable solution. Throughout the entire process, Go Gauge meticulously addressed potential risks and implemented robust mitigation strategies.

*"Our dedication to accuracy and attention to detail ensured that the project was completed successfully."*







Travelling from Latvia to Lithuania via the **Port of Klaipeda**, the transport required permits, pilot cars as well as a police escort.

“At Port Klaipeda, our 3PL office team supported the customer with all their needs, such as lashing, securing, loading on flat racks and more.”

Hereafter, **TransOcean** took responsibility for the last stretch of the journey where the oversized cargo crossed over to the **United States**. The shipment was made safely & successfully with thanks to the cooperation of both teams.



# 3PL & TRANSOCEAN COLLABORATE ON CONVEYOR LINE TRANSPORT

**3p Logistics & TransOcean** are glad to share their collaborative efforts in moving the elements of a conveyor line from **Latvia** to **Lithuania**, with the final journey handled by TransOcean to the **United States**. The delivery consisted of seven oversized pieces of cargo, with widths of 4.7 meters and heights of more than 4.5 meters.







## EUROPE CARGO HANDLE PROJECT CARGO SHIPMENT TO KAOHSIUNG

Europe Cargo, our members from **Belgium**, are pleased to announce their support of a project cargo shipment from **Sweden to Kaohsiung**. The company received the cargo from a transport company before arranging the stuffing of many containers, including some out-of-gauge containers and a breakbulk unit which weighed **52 tons!**

A total of **54 crates** weighing a combined **199 tons** were handled, covered and stuffed accordingly:

- 1x20'DV
- 1x20'OT
- 1x20'FR OOG
- 6x40'HC
- 6x40'FR OOG
- 1x40'OT OH

The larger 52-ton unit was delivered to the terminal directly by Europe Cargo.

*"We also arranged survey operations for the cargo stuffing and loading/lashing operations onboard the vessel, allowing our customer to trace each movement."*



**LET**  
a  
CeMAT ASIA  
event

# LET-a CeMAT ASIA event

## 中国（广州）国际物流装备与技术展览会

Date: 29-31 May, 2024  
Venue: Area D, China Import & Export Complex(Guangzhou, China)

### A Trade Show of Intralogistics

Supports the *manufacturing production* by industrial robots AGV/AMR, forklift and accessories, mechanical handling equipment, conveyor, storage and retrieval system (AS/RS), packaging equipment, automated distribution vehicle, MES system, WMS system, etc.

**CONTACT US:**  
Email: [info@chinalet.cn](mailto:info@chinalet.cn)  
Tel: +86-20-89617180



# GEBRÜDER WEISS SHIP RAIL BUILDING VEHICLES TO ALEXANDRIA

Gebrüder Weiss are glad to share news of two **rail building vehicles** they recently shipped from **Wilmington** in the United States to **Alexandria, Egypt**. The two pieces of cargo weighed **86 and 58 tons** with lengths of **23 meters**; each were loaded as breakbulk.

*"Since 2016, we have been increasingly involved in the movement of special railcars for the construction and maintenance of rail lines."*

Gebrüder Weiss transports between **30-40 units per year** across the globe.

Depending on the destination, the company utilise breakbulk, RO/RO and even container ships for ocean transport.



# MEGALIFT DELIVER TANKS TO PETRONAS REFINERY IN KERTEH

Megalift are pleased to report on a successful shipment of tanks they recently completed to a refinery owned by Petronas in **Kerteh, Malaysia**. The company were appointed to handle the transportation of two **over-height tanks** from their fabrication yard to Petronas' refinery in **Kerteh, Terengganu**.

Although the distance travelled was not too great, trudging through suburban areas with narrow driveways proved to be quite a challenge.

Due to the height of the cargo, Megalift had to obtain approvals from various authorities to execute the job. Many of the hanging cables had to be removed or temporarily elevated.

Additionally, Megalift submitted applications to the Public Works Department for permission to remove and reinstate three traffic light posts; as well as adjustments to the barriers, fencing and guardrails to make way for their transport.








PROJECT  
CARGO  
NETWORK



# 2023 ANNUAL SUMMIT

A stunning beach destination perched on Thailand's eastern Gulf coast and just 90 minutes from Suvarnabhumi Airport in Bangkok, makes Pattaya perfect for our 12th global gathering.

REGISTRATION

 [pcnmeetinghub.com](http://pcnmeetinghub.com)

## OUR SCHEDULE INCLUDES



Welcome Dinner  
Grand Pool Rooftop



1-2-1 Meetings  
Royal Summit Chamber



Group Dinner + DJ  
Sky Aquarium Infini Pool

12-14 November 2023  
Royal Cliff Hotel Group  
Pattaya

Please go to  
[projectcargonetwork.com](http://projectcargonetwork.com)  
for more information.



## GRAND ARABIA HANDLE AIRCRAFT ENGINES IN JORDAN

**Grand Arabia** are pleased to report on a shipment that their team in **Jordan** completed in July. The cargo involved with this shipment included two large **aircraft engines**.

"This is a new line for Grand Arabia's air freight department."

*Grand Arabia Forwarding and Logistic Services are members in Jordan and Iraq located in Amman and Basra. With recommendations from PCN members, they are experts in project cargo handling in the region. The company are 10 years old and are registered with the Jordanian Logistics Association.*



# FIRST GLOBAL LOGISTICS MOVE 1500KVA TRANSFORMERS TO NIGERIA

First Global Logistics are pleased to share that they recently moved a series of **oversized transformers** from **Egypt to Nigeria**. The cargo included seven units of **1500 KVA transformers**, as well as an outdoor LV Switchgear for this time critical project. The shipment in total featured a gross weight of **104.5 tons** and a volume of **493.1 CBM**. A primary plan, drawn by the factory of origin, was based on these oversized transformers being dismantled. After various studies and a cargo survey on the commodity type, its dimensions and center of gravity, First Global Logistics' project team reverted to another solution.

"We re-planned the loading of the dismantled transformers to ONLY (1x40'HC + 5x40'FR OOG), with reduced OW/OH by switching some units with others to fit into the following dimensions:"

- **Package 1)** 1 x 11.51 x 2.50 x 3.00 M - 21,100 KG - CBM: 86.325 M
- **Package 2)** 1 x 11.51 x 2.50 x 3.00 M - 21,100 KG - CBM: 86.325 M
- **Package 3)** 1 x 11.51 x 3.00 x 3.50 M - 23,400 KG - CBM: 120.855 M
- **Package 4)** 1 x 11.51 x 3.00 x 3.50 M - 23,400 KG - CBM: 120.855 M
- **Package 5)** 1 x 7.50 x 3.00 x 3.50 M - 15,500 KG - CBM: 78.75 M

The company offered 3 different proposals to various ports, with the shipment being nominated to **Apapa Port** after receiving their approval to handle special equipment.

First Global Logistics' project team then collaborated with the shipper to devise a packing plan for the dismantled units.

Road permits and approvals were acquired by FGL, who also handled customs formalities, port entry and an ocean freight solution.

*"The shipment was delivered safely to our client in Apapa Port before the deadline with utmost customer satisfaction."*



# PARISI GRAND SMOOTH DELIVER LARGE DISC DRYER TO CHILE

Parisi Grand Smooth Logistics are happy to report on the success of a project shipment they recently handled. The cargo included in this shipment was a **disc dryer** with a weight of over **one-hundred tons**. The single unit featured dimensions of **13.7 (H) x 3.40 (W) x 4.16 (H) meters**.

Parisi Grand Smooth handled operations as the dryer was shipped from **Shanghai Port** to **San Antonio, Chile**.

*MAFI equipment was used before loading on a RO/RO vessel from Eukor, which departed last month.*





# MEGAGON TRANSPORT CONCRETE PUMP & MIXER TO SIERRA LEONE

Megagon Project Solutions are pleased to share a successful shipment they recently completed from Turkiye to Sierra Leone.

The cargo was initially received at **Ankara**, Turkiye before being transported to **Derince Port** and loaded onto a vessel. After being secured on-board, the concrete pump and mixer were successfully delivered to **Freetown** in **Sierra Leone**.



## EZ LINK AND FORTUNE INTERNATIONAL COLLABORATE ON YACHT TRANSPORT

PCN Members **EZ Link** from **Taiwan** and **Fortune International Transport** in Italy recently executed a shipment of out-of-gauge cargo together. The cargo, a large **yacht**, was transported via RO/RO vessel from **Italy** to **Taiwan**. Their client's request for a smooth transportation was handled by under **ex-works** by **Fortune International** in Italy.

**EZ Link** performed a tailor-made service, selecting the **RO/RO vessel** for the cargo to be loaded at **Savona Port** in Italy, whilst also handling the cargo discharge at **Taipei Port**, Taiwan.

"An extendable trailer was chosen for inland haulage in both Italy and Taiwan."

From the port in Taipei, EZ Link also coordinated the door delivery movement of the cargo to **Anping Port**. They arranged for the cargo to be loaded onto a low bed trailer, and acquired road permits due to the oversized dimensions of the yacht's main body. As for the operations sea-side, EZ Link utilised a suitable crane, and cooperated with professional longshoreman to move the yacht from its truck.

*"Thanks to the great cooperation & communication between EZ Link and Fortune, our clients in Taiwan and Italy have been satisfied with the 'timely and reliable service' as always."*





## GLAUBE COOPERATE WITH KHIMJI ON LARGE SHIPMENT TO SAUDI ARABIA

Glaube Logistics are pleased to share a recent transport which they completed with the partnership of fellow PCN Member in Oman - Khimji Ramdas Projects, to the commercial port in Yanbu. The cargo involved in this shipment weighed a total of **1,012 tons** with a volume of **5,525 CBM**.



**A grand total of seventy-one units were moved, with the length of some of the cargo reaching over 20 meters. These oversized units were delivered with extreme caution through the city.**

Glaube Logistics covered the customs clearance, as well as the transportation for a charter vessel, whose cargo was loaded in **Eleusis, Greece** before being directly received at **Yanbu** commercial port.





**ports&customs**  
W E E K

28 - 29 November 2023

Emara Ole Sereni Hotel

Nairobi , Kenya

**Register Now**



# ONSHORE WIND CONFERENCE 2023

21 SEPTEMBER | EDINBURGH

The most important event in the onshore wind industry calendar returns bigger than ever before.

**REGISTER NOW**  
[BIT.LY/ONSHOREWIND23](https://bit.ly/onshorewind23)

## EVENT PARTNERS



**RWE**







9<sup>th</sup> Edition

# GLOBAL SUPPLY CHAIN AND LOGISTICS SUMMIT

16<sup>th</sup> – 17<sup>th</sup> November 2023  
Inter Continental,  
Berlin, Germany

In-Person Participation Only

THE DESTINATION FOR NEW PROJECT CARGO BUSINESS

# BREAKBULK

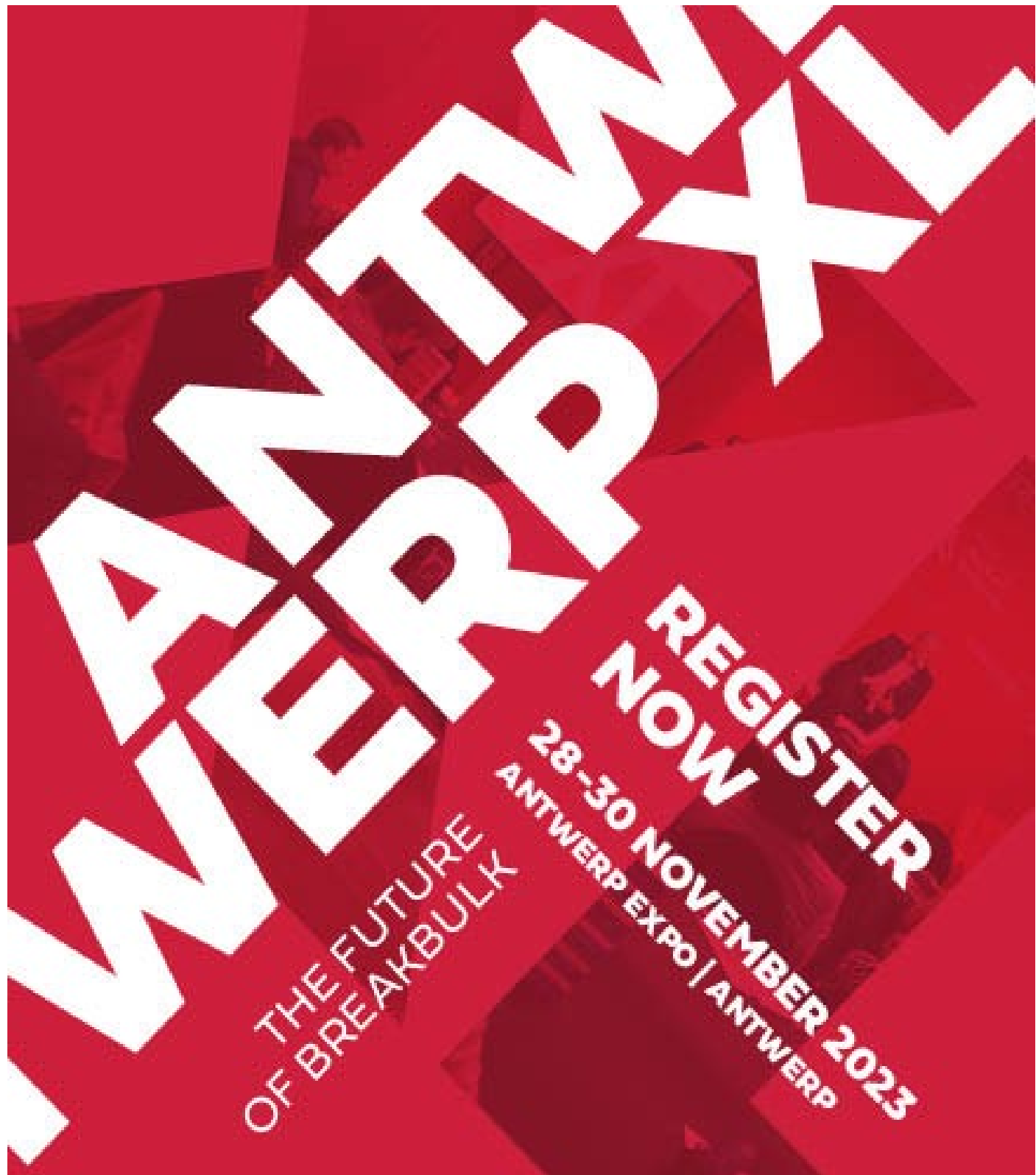
AMERICAS 2023 HOUSTON

September 26-28  
George R. Brown Convention Center

REGISTER NOW

[americas.breakbulk.com](https://americas.breakbulk.com)





# ANTWERP XL

THE FUTURE  
OF BREAKBULK

REGISTER  
NOW

28-30 NOVEMBER 2023  
ANTWERP EXPO | ANTWERP



REGISTER NOW >  
[ANTWERPXL.COM](http://ANTWERPXL.COM)



by EASYFAIRS