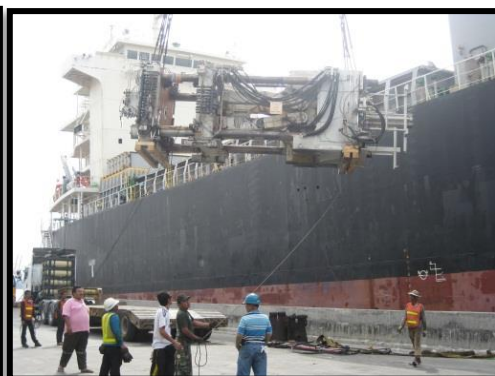
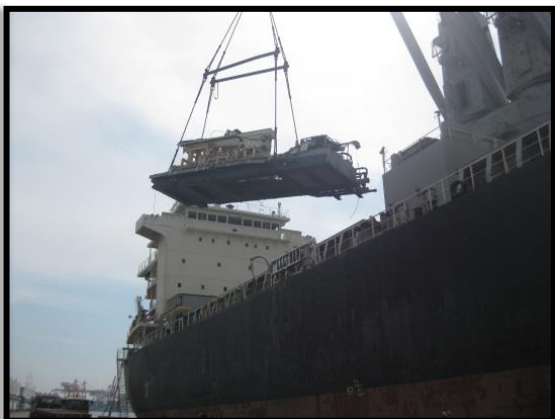


1ST PROJECT



Routing: KOBE- BKK

Job scope: Clearance/Transportation

Commodity: Plastic injection machine

Volume / GW: 168.046 CBM / 74,150 KG

Mode of Transport: Break Bulk

2ND PROJECT



Routing: SIN - SATTAHIP

Job scope: Stevedore / Clearance / Transportation

Commodity: 460K Hydraulic Rig

Volume / GW: 407.720 CBM / 160,000 KG

Mode of Transport: Break Bulk

3RD PROJECT



Routing: USLAX-THBKK

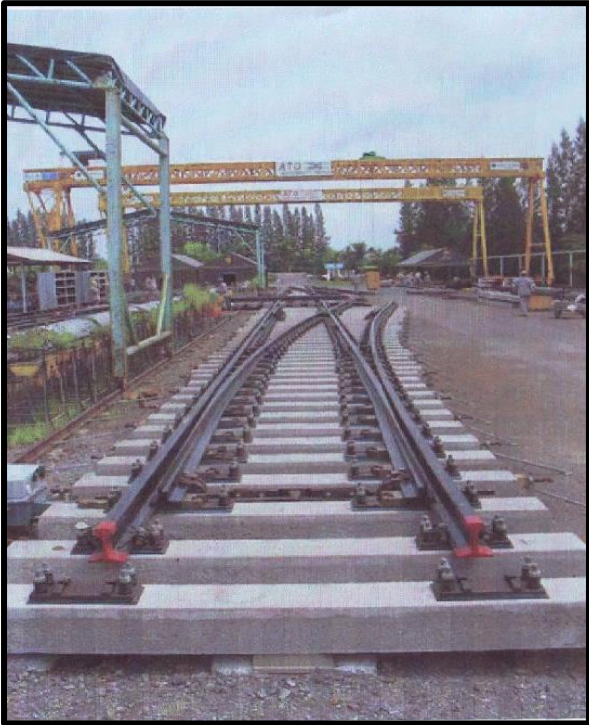
Job scope: Unstuffing / Clearance / Transportation

Commodity: Compressor

Volume / GW: 19.840 CBM / 6,525 KG

Mode of Transport: FCL

4TH PROJECT



Port: Thailand to Taiwan

Mode of Transportation: Origin handling, Tarpaulin, Ocean frt.

Commodity: Rail Rack

Volume: 20 Flat Rack / month & continue 6 months

5TH PROJECT



Destination: Muara, Brunei

Commodity: Construction Materials + Combined Cycle Power Station

Quantity: 129 Packages

Volume / GW: 1250.86 cbm / 370,840.29 Kgs.

Mode of Transportation: Origin pick up, Custom clearance, Charter Vessel, Stevedore

6TH PROJECT



Destination: Singapore to Satahip port

Commodity: 460K H.Work Over Unit with Accessories

Quantity: 81 PICS

Volume / GW: 407.72 M3 / 160,000 KGS.

Mode of Transportation: Partial Charter, Custom & delivery

7TH PROJECT



Routing: DFW-BKK & BKK-DFW

Commodity: Engine, Purged (PWEL V2500 ESN: V10116)

GW: 5088 KG.

Mode of Transport: Air including custom pick up & delivery

8TH PROJECT



Trade: FOS-SUR-MER, FRANCE-LAEMCHABANG

Commodity: Machinery & Parts

Mode of transportation: FCL/Flat Rack (OOG)

Total Volume: 156 cbm

Total G.W.: 109,446 kg

9TH PROJECT



Trade: SINGAPORE - LAEMCHABANG

Commodity: Crawler Crane /Drilling Rig Crane & Parts

Mode of transportation: RORO

Total Volume: 1 Unit

Total G.W.: 35,800 kg

Total Measurement: 76,700 cbm

10TH PROJECT



Trade: SAVANA PORT - LAEMCHABANG

Commodity: Hydraulic drilling rig hr 180 and 7 statics of accessories

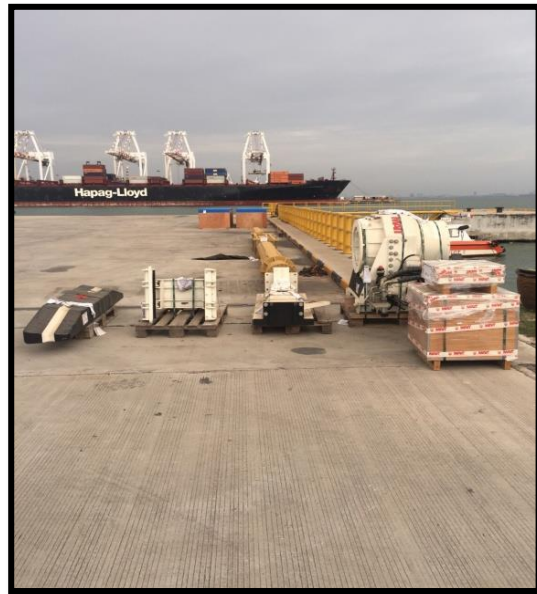
Mode of transportation: RORO

Total Volume: 1 Unit

Total G.W.: 60,691 kg

Total Measurement: 160.850 cbm

11TH PROJECT



Trade: SAVANA PORT - LAEMCHABANG

Commodity: Hydraulic drilling rig hr 130 and accessories

Mode of transportation: RORO

Total Volume: 1 Unit

Total G.W.: 37,174 kg

Total Measurement: 97.694 cbm