

Projects handling
portfolio





RIO Logistics, is a integrated logistics solution provider, rendering specialised complex, critical and time-bound logistics services that provide “hands on” support and coordination. We ensures deliver cost effective, timely solutions, minimizing risk and optimizing efficiency on all our projects.

- Freight Forwarding
- Ship Spares and Marine Parts Logistics
- Off-shore Logistics
- Project and Heavy-lift Logistics and handling (OOG Cargo, Machinery, Offshore equipment)
- Customs Brokerage
- Bonded Warehouse
- DG Transportation and Hazmat Cargo handling
- Stevedoring Services
- Line handling Services
- Door-to-Deck-to-Door Services (Port, Shipyard, Anchorage, OPL)
- Cross border Trucking (Singapore-Malaysia)
- Transit project cargo handling (Singapore-Batam, Indoneisa)
- Breakbulk/Conventional Shipping
- Reverse Logistics

Accomplishments

RIO Logistics has a reputation for meeting its customers’ needs within extreme stringent deadlines. We are unique from other logistics providers as our strength lies in customising our services to meet our customers’ needs without compromising on the quality of service.

Subsea tree projects - Cross border Trucking

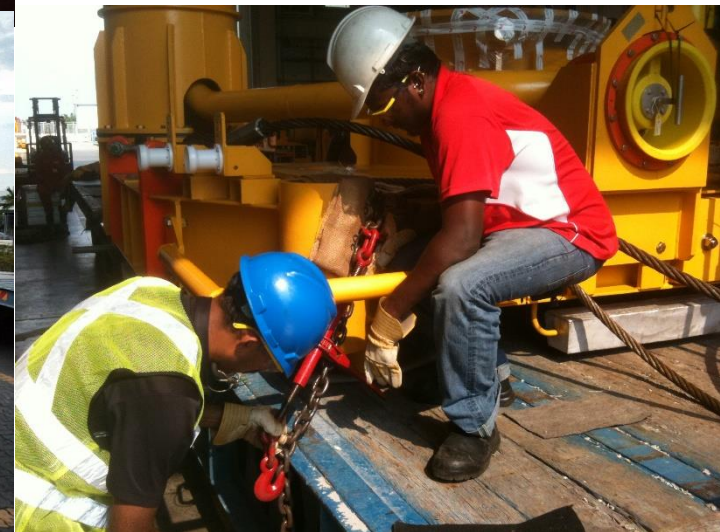


Moved from Tanjung Pelapas Port (Malaysia) to Jurong Port (Singapore) by road with Police Escort

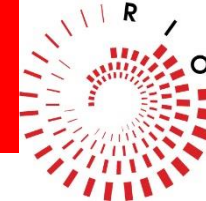
- Subsea trees- Weight range 42, 46 tons
- Loading at Cameron, Tanjung Pelapas Port, Johor Bahru, Malaysia
- Discharge at Jurong Port, Singapore
- Load on deck to break bulk vessel
- Final destination - Fremantle, Australia



- ✓ Heavy duty multi-axle low bed trailer
- ✓ Heavy lift lashing
- ✓ Certification by Surveyor
- ✓ Police Escort teams (Malaysia & Singapore)
- ✓ Customs Documentation
- ✓ Direct Loading on to break bulk Vessel



Mobilisation of Hammer - 60 ton



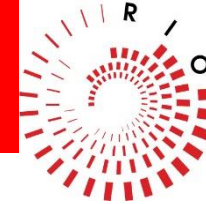
Mobilisation of Hammer from the yard to on board to the Pipeline Vessel at Singapore Anchorage

- Mobilisation of Hammer - 60 ton
- Loading at Yard by 200 ton Mobile Crane
- Trucking from Yard to Private Ship Yard
- Heavy duty multi-axle low bed trailer
- Heavy lift lashing

- ✓ Deployment of 180 ft flat barge
- ✓ Discharge from trailer and load on to the barge by 300 ton crane due to outreach of crane boom.
- ✓ Secured with lashing and welding
- ✓ Lifting from barge and direct loading on board to Pipeline Vessel at Anchorage.



Discharging of SPMT & Power packs from RORO Vessel



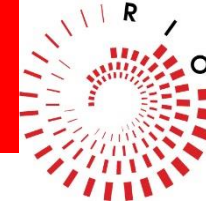
Discharging of Scheuerle SPMT (Self-Propelled Modular Transporters) & Power packs from RORO Vessel

- POL: Southampton
- POD: Singapore
- Total 223 Tones / 240 M3
- 2 Units, each Unit consists of
 - S 4/30 Scheuerle 4 axle SPMT
 - S 6/18 Scheuerle 6 axle SPMT
 - S 4/70 Scheuerle 4 axle SPMT
 - S 6/35 Scheuerle 6 axle SPMT &
 - P19 Scheuerle SPMT Power Pack
- 1xMafi - Consists of 2x6 axle SPMT

- ✓ Discharge from the RORO Vessel
- ✓ Dismantled the SPMTs
- ✓ Transfer to another breakbulk port by trailers to load on to barge
- ✓ Final delivery: Batam, Indonesia

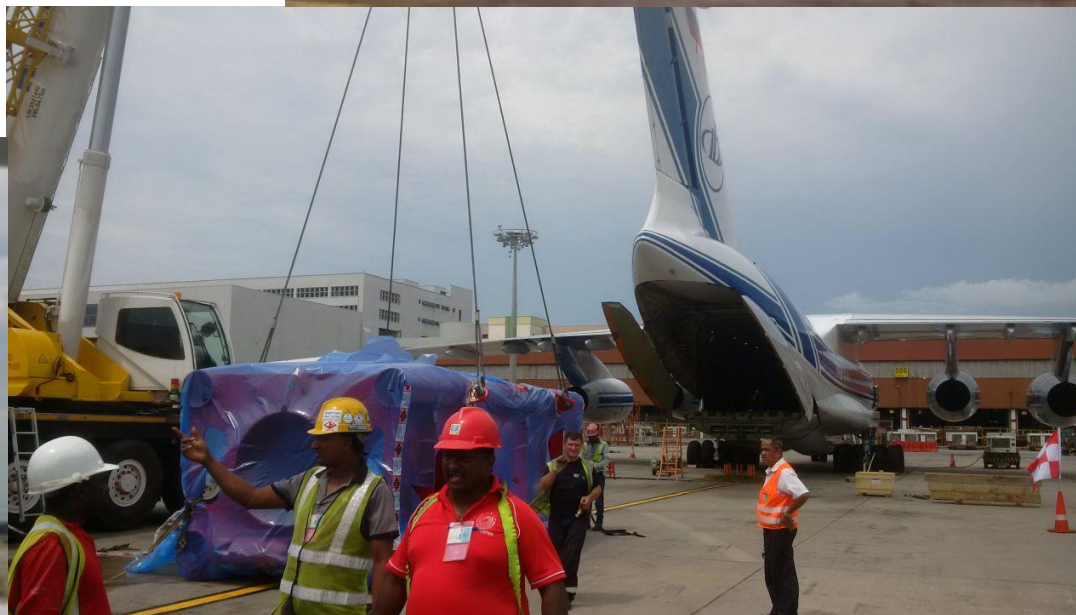


Discharging of Hydro Power Unit from Chartered flight

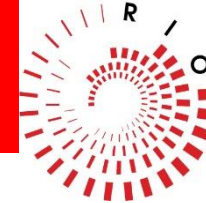


Arrived on charter flight Volga-Dnepr Airlines,
IL76TD Stage IV

- POL: Netherlands
- POD: Singapore
- Final delivery: On board to Vessel MV Maagracht
- Cargo: 1 piece bear-cage and hydr. Power unit
Dims 8 x3.30 x2.45 mtr / 25 tons



OOG Cargo from Hamburg to Semarang, transit in Singapore



- POL: Hamburg
- POD: Singapore (Transit, re-export)
- Final Destination: Surabaya, Indonesia.
- Cargo: 1 piece bear-cage and hydr. Power unit
Dims 8 x3.30 x2.45 mtr / 25 tons



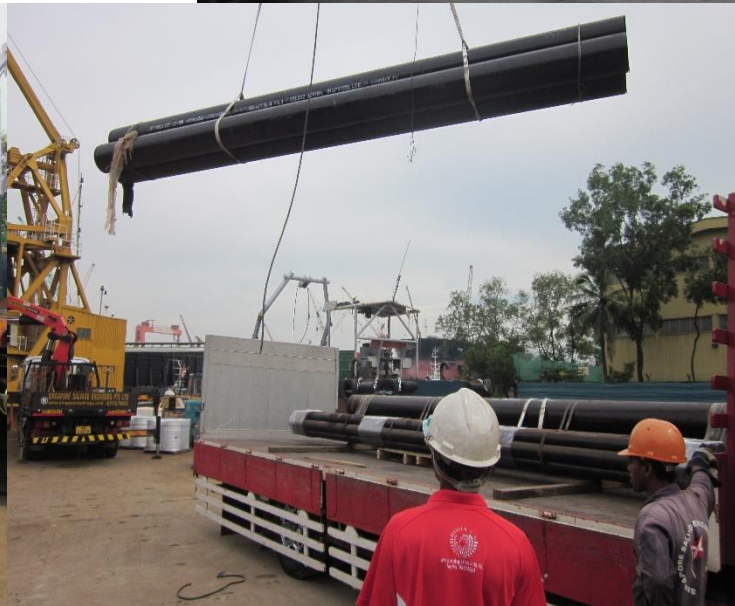
- OOG Cargo by RORO Vessel to Singapore from Hamburg
- Discharge from RORO Vessel and transfer to breakbulk port with police escort.
- Load on to another breakbulk vessel to Surabaya, Indonesia.



Other Projects



- Offshore Equipment for Pipeline Vessels and Support Vessels (Drill pipes/bits, gas cylinders, Reels and other offshore spares)
- Loaded onto the Barge and move by Tug/Barge
- Delivery on board to the Vessel at Anchorages



Other Regular Specialised Projects



Below are some of the regular specialised projects which we render our services:

Cruise ships, Defence Navy Vessels and Line Handling Services

- Stevedoring Services for **Cruise Vessels**
 - Replenish the fresh vegetables/fruits and frozen supplies.
 - Time critical project, must complete with in limited hrs before departing.
 - Deploy the manpower of 50-60 men to carry the operations.
- ✓ Provide Line handling services to US Navy Ships- docking at Changi Naval Base, Singapore
 - ✓ Deploy the line handlers for berthing/un-berthing of Navy Ships.
 - ✓ Deployment of cranes and trailers to mobilise gangways.
 - ✓ Transport and position of fenders and ramps.
 - ✓ Stevedoring Services.





Main office:

No.1 Penjuru Lane
Singapore 609217

Airport Office:

115 Airport Road, Cargo Agents Building C,
#04-06 Singapore 819466

Bonded Warehouse:

No.1 Penjuru Lane
Singapore 609217

Tel: (65) 6863 4644

Fax:(65) 6898 9550

Email: riops@riolog.com

Web: www.riolog.com

✓ Accreditations:

