



MMP LOGISTIC CO., LTD

COMPANY PROFILE

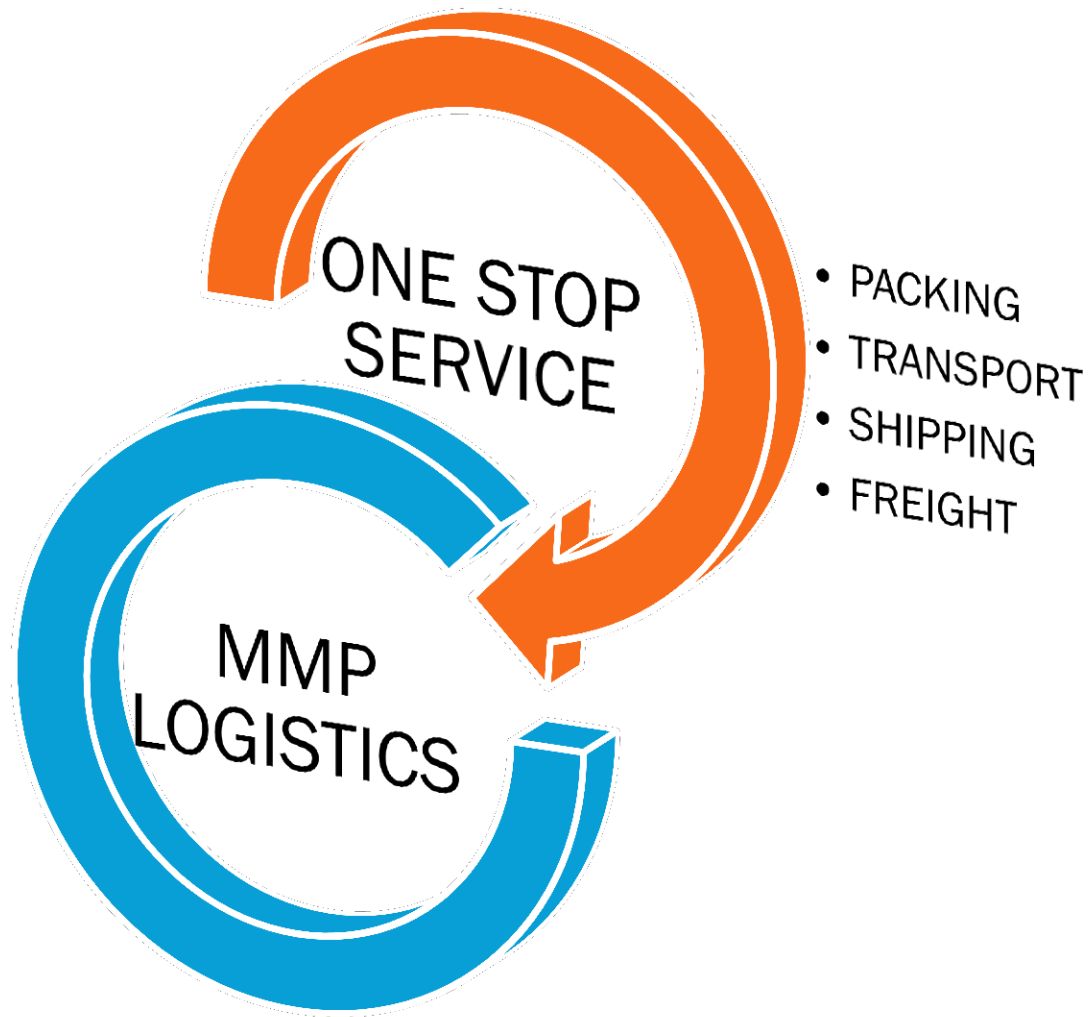


BACK GROUND

BACK GROUND

MMP Logistics was established in a early year of 2010 affiliate company of MACPRO EXPRESS Co.,Ltd. to the purpose of serving a booming of Thailand economy and the multimodal of international transportation business. **We are act as NVOCC and International Freight Forwarder**





ONE STOP
SERVICE

- PACKING
- TRANSPORT
- SHIPPING
- FREIGHT

MMP
LOGISTICS



Both Air Sea and Multimodal transportation with the FULL packages of **one stop services**, installation, manpower supply, mobilization, chartering. Since we do have our own in house customs brokerage by computerized with EDI system and all the internal software program system.





With our **best serving** with competitive freight and sincerity to our customers, Our market presently is served to all globalized destinations with agents and branches more than 75 stations around the world. **Our strong territories now is USA-Canada, South of America, Europe, Australia, and Intra-Asia.** Which at presently we carried more than 400 boxes in and out per month.



OVERSEAS SERVICES

- ☞ Conventional shipping, break bulk, RO/RO
- ☞ FCL/FCL and LCL/LCL door-to-door services
- ☞ Project shipment and project management
- ☞ High & Heavy shipment
- ☞ Planning, development and implementing tailor-made supply concepts
- ☞ Pro-active control and steering of all related processes
- ☞ Full and part charter services

PORT LOGISTIC SERVICES

- ☞ Multi model port handling at own terminals
- ☞ Value Added Service
- ☞ Open and covered storage for project cargo
- ☞ 20 inland and 10 seaports connected to the European inland waterway network.
- ☞ Dedicated terminals for your products
- ☞ High and Heavy - Ro/Ro services up to 300 to per piece
- ☞ Crane service up to 600 to per piece
- ☞ High and heavy platforms with capability up to 90 to / m²

INLAND BARGING AND COASTAL SERVICES

- ✧ Fleet of over 400 own or contracted inland barges and 81 coastal vessels for river
- ✧ and coastal shipping services
- ✧ Inland barging within the entire European inland waterway network
- ✧ Coastal vessel from 1.000 to – 4.000 to DWCC
- ✧ Liner services to United Kingdom, Sweden, Finland, Norway and Portugal
- ✧ Pan European door-to-door transportation

ROAD SERVICES

- ✧ LTL and FTL shipments
- ✧ Project cargo, heavy lift shipments, dangerous goods shipments
- ✧ Worldwide partner network for project and high and heavy shipments
- ✧ Specialized in Eastern Europe and Russia

AIR SERVICES

- ✧ Full and part charter services
- ✧ Project shipments
- ✧ Sea-Air consignments
- ✧ A-Class logistics service provider in China
- ✧ IATA Agent

RAIL SERVICES

- ✎ European rail transportation by block train, train set and single wagon
- ✎ Own rail trucks on the European railway network
- ✎ Transit shipments to Russia or other eastern European Countries
- ✎ Oversized shipments and heavy lifts
- ✎ Track change normal gauge to broad gauge

CUSTOMS SERVICES

- ✎ Customs Clearance
- ✎ Bonded warehouse
- ✎ Fiscal representation of companies in other EU countries
- ✎ Registration with fiscal authorities
- ✎ Filing of complete fiscal and statistical reports
- ✎ Own customs agent ALS
- ✎ Transit handling



WE HAVE THE WOODEN CASE, CRATE , PALLET AND WOODEN **SUPPORT**
FOR ALL
TYPE **MACHINE** AND **CARGO**





Scope of work

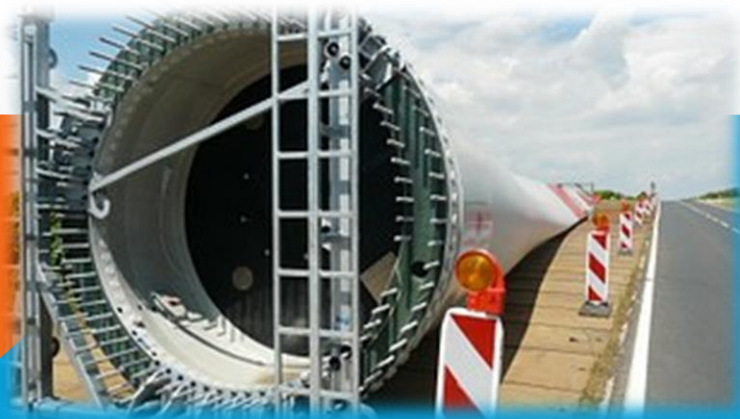
Thai Summit

- : Moving machine 23 lines
- : Disconnect / reconnect electric
- : Air compressor piping
- : Level setting





HAUY BONG POWER PLANT





HAUY BONG POWER PLANT





EGAT PROJECT RAMA XI

EGAT PROJECT RAMA XI









Thai Plastics used floating crane move cargoes along side loading to Vietnam



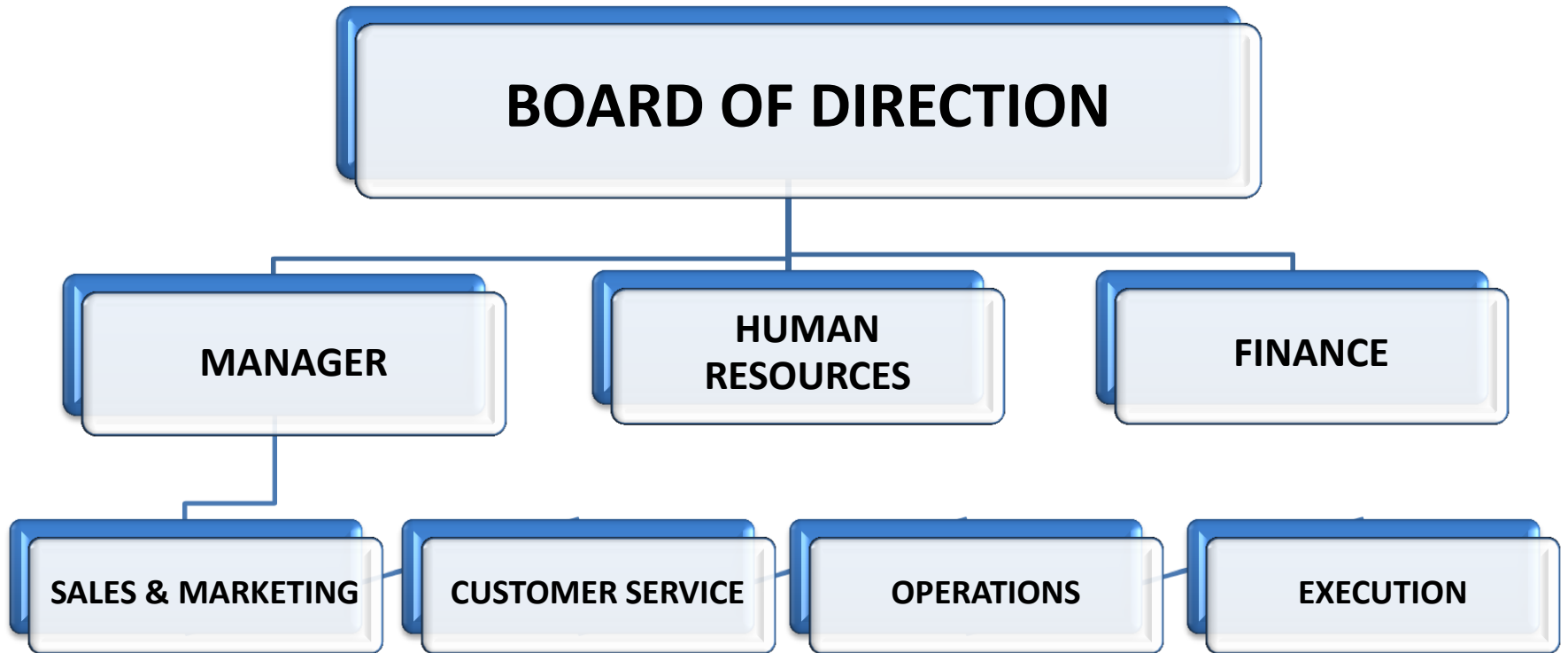


THAI PLASTICS MOVE LINE VI RESIN FM THAILAND TO VIETNAM DISMANTLE & INSTALL ALL PRODUCT RESIN LINE





ORGANIZATION CHART





INFORMATION

INFORMATION

COMPANY
ADDRESS

MMP Logistics Co. Ltd
729/116 RATCHADAPISEK ROAD,
BANGPONGPANG, YANAWA BANGKOK 10120, THAILAND

PHONE

66-2-6838644 (HUNTING 6 LINES)

FAX EMAIL

66-2-6838646

ESTABLISH

surapong@mmplogisitcs.co.th

Bank Reference

September 2010

Activities

Thai Farmer Bank Ratchadapisek (Sukhumvit-Rama iv)
Freight Forwarder and NVOCC/Project Handling
Cargoes/Transportation Man power supply/ Installation/
Provider / Customs House Broker



MAD

