

NAVI-GATE

Together we make borders disappear!

PROJECT SHIPMENTS

Poland to Mauritania

- Supply of 2 Stackers, 1 Reclaimer & 4 conveyors
- 4 full charters (4000 dwcc & geared each)
- 11 770 freighttonnes – 2340 tonnes
- 35 containers ex Antwerp/Geneva/Vancouver
- Air transport ex Luxembourg
- 6 month project

- Pre-carraige / Loading / Sea-Air Freight
Unloading / Loading Supervision

- All mobilisations as per clients planning
- No damages on-route



PROJECT SHIPMENTS

Europe to Morocco

- Supply of 2 sulphur shipunloaders (2000 mts/hrs)
- Supply of 2 fertiliser shipunloaders (2000 mts/hrs)
- Supply of 2 sulphur screw unloaders (2300 mts/hrs)
- Supply of 2 sulphur grab unloaders (1500 mts/hrs)
- Collection ex France, Germany, Turkey, Italy, India, Denmark, Korea, Italy, UK, Slovenia & Spain
- Container (Dry & Flat) + charter vessels
- 5 year project
- + 50 shipments
- 2000 mts / 6600 cbm of cargo shipped
- Pre-carrage / Loading / Sea Freight Unloading / Loading Supervision

- All mobilisations as per clients planning
- No damages on-route



PROJECT SHIPMENTS

Europe to Peru - Iquitos

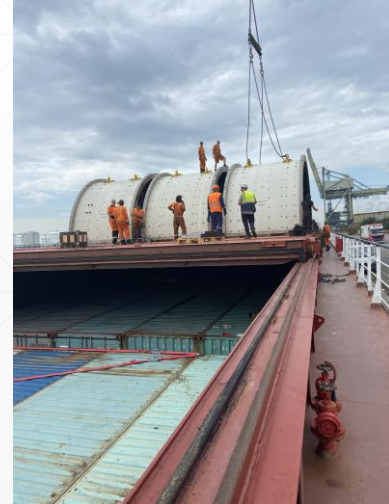
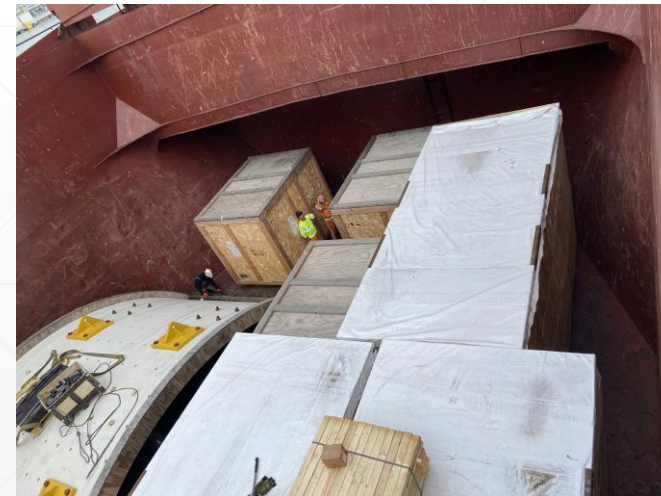
- Supply of Power Plant
- Import handling Breakbulk, containers & roro
- Full co-ordination & execution of transfer Antwerp to Rotterdam
- Container stuffing
- Direct delivery 7 pcs engine @ 128 mts uw
- Cargo check & marking
- Admin support
- Loading supervision
- 7582 freighttonnes
- 70 SOC containers
- Biggest item 965 x 310 x 520 cm



PROJECT SHIPMENTS

Europe & USA & China to Murmansk

- Supply of Mill dryer
 - Import handling Breakbulk, containers & ro-ro
 - Full co-ordination & execution of transfer Ex Spain, Turkey, Germany, France & Netherlands
 - Cargo collection ex poland under time pressure + SOC purchase + Container stuffing
 - Cargo check & marking
 - Admin support
 - Loading supervision
 - Customs negotiations
-
- 5000+ freighttonnes
 - 52 SOC containers

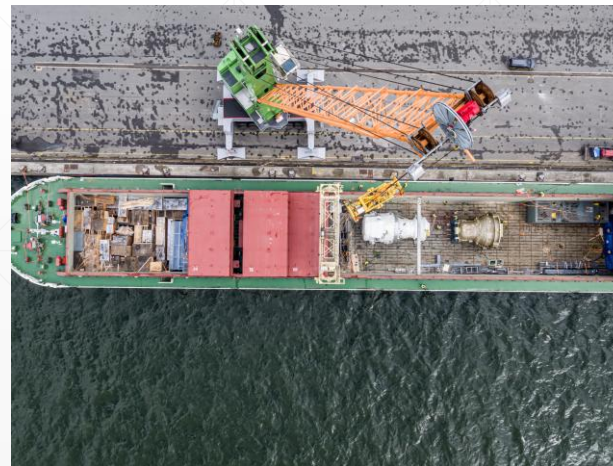


PROJECT SHIPMENTS

Europe to St Petersburg

- Supply of Generator
- Full co-ordination & execution of transfer & loading operation (cargo ex storage in Antwerp)
- SMPT movement
- Use of floating crane
- Cargo check & marking
- Admin support / repacking operations
- Loading supervision
- Customs negotiations
- IMO disposal

- 8000+ freighttonnes
- 400+ pieces
- Heaviest piece 380 mts



PROJECT SHIPMENTS

Europe to St Petersburg

- Supply of Ice coffee installation
- Fragile & sensitive cargo
- Collection ex Europe (Germany, Netherlands, Spain, France)
to hub location
- Cargo check & marking
- Admin support
- Loading supervision
- 907 freighttonnes

