

SEA CARGO LOGISTICS

Find your LATAM partner here

PROJECT CARGO 2025 • SEACARGO.COM

© 2025 SEA CARGO LOGISTICS





About Us

At SCL, we are a multicultural company dedicated to fulfilling your requirements. We acknowledge that commercial and logistical needs are diverse, and we are committed to meeting your needs wherever you may be located.

With a network of specialists strategically located in key logistical hubs across Latin America, we offer a first-class service in project cargo, sea freight, air freight, and road freight. Our specialists are readily available to provide the support you require.

With a solid financial foundation headquartered in Mexico City, we are your dependable partner in the region. We offer the support you need to achieve your business objectives within LATAM.

FIND YOUR LATAM PARTNER HERE!





Vision

To be the preferred logistics partner of our customers through excellence in service and the best working environment for our collaborators.

Mission

Facilitate the foreign trade operations of our clients by offering a reliable, competitive and personalized service.

Values



COMMUNICATION



SECURITY



HONESTY



INITIATIVE



INNOVATION





Locations



📍 MEXICO

- CDMX
- MEX (Mexico City International Airport)
- NLU (Felipe Angeles International Airport)
- Aguascalientes
- Chihuahua
- Ensenada
- Guadalajara
- Leon
- Mérida
- Monterrey
- Puebla
- Queretaro
- San Luis Potosi.

📍 COLOMBIA

Medellin & Bogota

📍 PERU

Lima

📍 COSTA RICA

San Jose

📍 PANAMA

Panama

5 COUNTRIES

18 OFFICES

+240 STAFF

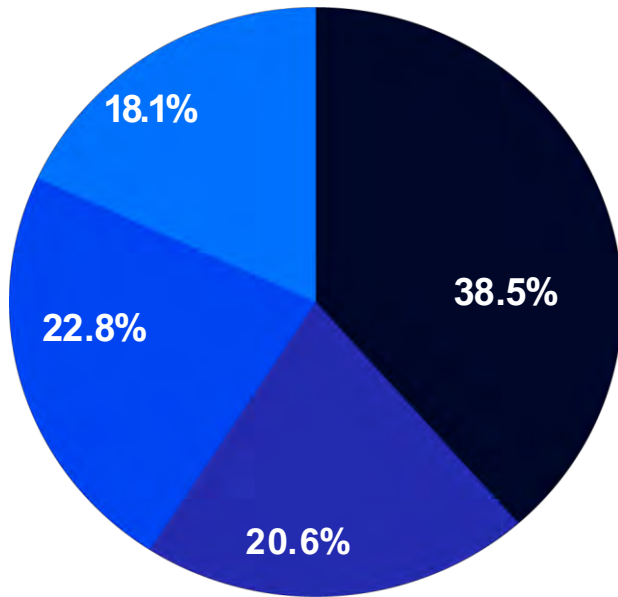


SCL MEXICO

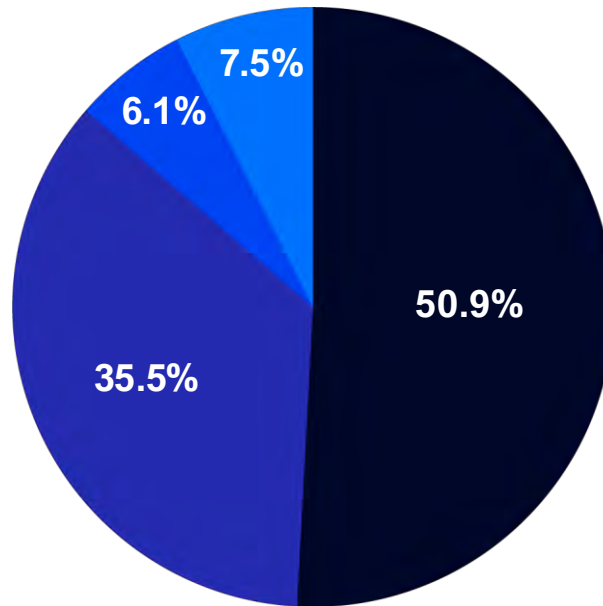




Business Scope



EXPORT



IMPORT

● Asia ● Europe ● South America ● North America



Ocean Freight

- Ranked among the top 10 Mexican Freight Forwarders in terms of ocean shipping volume."
- Total annual operational volume exceeding 30,000 TEUs.
- Annual LCL (Less than Container Load) volume exceeding 40,000 cubic meters.



Air Freight

- We have our own offices in the 2 main airports in Mexico (MEX - AICM & NLU - AIFA).
- Total Operations volume of over +5,000 tons per year.
- IATA certified.

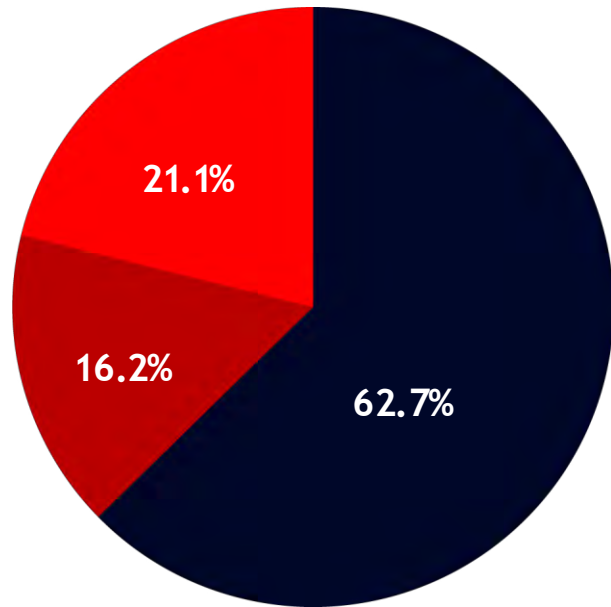


Road Freight

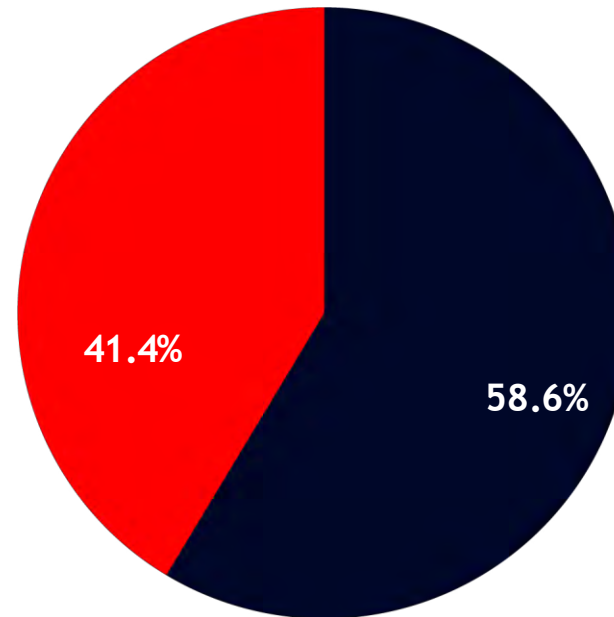
- Comprehensive national coverage for both import and export Full Truck Load (FTL) shipments, including exports of 53-foot trailers to the USA and Canada.
- Cross-border shipments between Mexico and the United States and Canada, available both directly and with trans-shipment services.
- "Ocean freight container haulage services."



Business Scope



OCEAN - AIR - ROAD



IMPORT - EXPORT



Expand the reach of your business

OCEAN FREIGHT



FCL
Full
Container



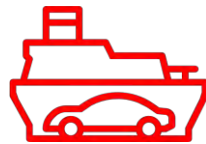
LCL
Less than Full
Container
(from a pallet)



FCL RF
Reefer
Container
(Perishables)



Flat racks &
Open Tops



RO/RO CARGO



Project Cargo
Packing and Loading



Going far, staying close.



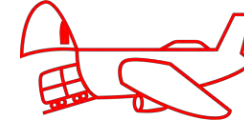
Global reach in record time



AIR FREIGHT



Regular and
express shipments



Air
Charters



Hand
Carrier



Own office in
Customs -Mexico
City's International
Airport



Cargo packing
and labelling



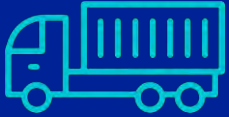
IATA
Certified Agents

Going far, staying close.



Choose the route to growth

INLAND FREIGHT



FTL
Full
Truck Load



LTL
Less than Full
Truck Load
(from a pallet)



**GPS tracking and
security escort
service**



Hot shots



**Specialized
trucks**



**Ocean freight
container
haulage**



Going far, staying close.



We supervise every detail, our extensive experience support us.

A smart planning process from the preliminary stages. **Safety comes first...**

- Road Surveys.
- Packing and unpacking.
- Dismantling and reassembly of industrial plants (Rigging).
- Loading and unloading with high-capacity cranes.
- Ocean Freight (Break Bulk, RORO).
- Air and Ocean Chartering.
- Inland Freight (oversized or overweight)



Going far, staying close.



Safety comes first...



We analyse:

- **The complexity of the cargo**
- **Maximum weight and dimensions of pieces**
- **Client delivery obligations**
- **Origin facilities/routes**
- **Consolidation points**
- **The import/export regulations**
- **Onsite delivery and installation requirements**



INDUSTRIAL FURNACE AND ANCILLARY

L 7320 x W 5400 x H 4200 / weight 70 tons

L 7100 x W 3200 x H 3850 / weight 15 tons

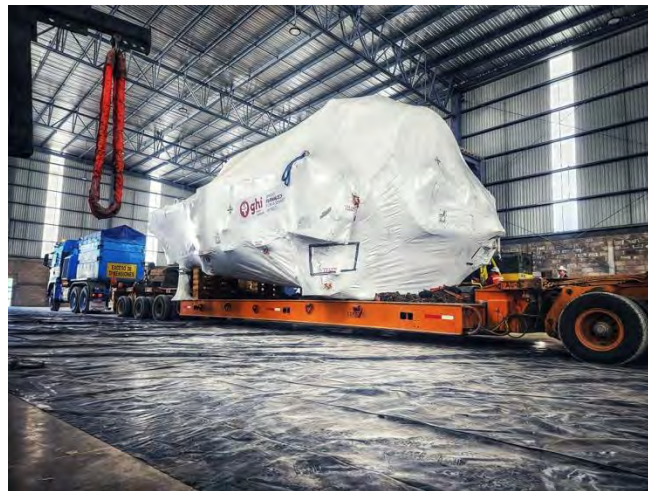
L 6400 x W 4950 x H 3000 / weight 12 tons

L 10100 x W 3000 x H 3100 / weight 18.52 ton

6x40' OT + 5x40' HC + 1x20' GP

Achieved completion of another project of 1,215 cubic metres which included 360 tonnes of equipment. The cargo was loaded on MAFI, flat rack and open top containers.

Notwithstanding numerous obstacles, our team efficiently transported the cargo including the unloading on site, showcasing exceptional coordination and ensuring the project's timely completion.



STEEL STRUCTURES & EQUIPMENTS

PART CHARTER Coordination

Over 1500cbm of steel structures

Origin: Tianjin

Destination: Manzanillo

Successfully completed another project of 1,500 CBM which included 250 tons of steel structures and equipment. The break-bulk cargo was loaded from Tianjin port to Manzanillo.

Despite multiple challenges, our team efficiently transported the cargo showcasing exceptional coordination and ensuring the on-schedule completion of a major project without delays.



STEEL COILS – Part Charter

605 Tons PART CHARTER with Steel Coils

From Tianjin, CN

To Manzanillo, MX

82 units (steel coils)

Due to space and equipment issues in China after Labor Day, we proactively offered our customer a Break Bulk option using part-chartering rather than sending on standard containerized service.



Going far, staying close.

AIRCRAFT ENGINE

- **6,000 kgs aircraft Engine**

From Mexico City to Frankfurt, Germany
We share the successful AOG shipment of an aircraft engine which was possible thanks to the expertise of our project cargo team.

Our team guarantees the fast and safe delivery of this type of cargo.
We are deeply grateful to our customers for trusting us for their urgent shipments.



PRODUCTION LINE - MACHINERY

FROM EXW in Jalisco Estate up to Brazil

1 large item shipped on a MAFI

Dims 1321 x 262 x 260 cm – 10,840.00 kg
+ 9x40' HC with ancillary items as part of
the production line.



Going far, staying close.

NEW PRODUCTION LINE - BREWERY

4 OOG boxes ex Germany to Mexico

560 x 240 x 357 cm

313 x 272 x 299 cm

640 x 493 x 358 cm

572 x 312 x 400 cm

+ 73 x 40' HC SOC containers



Going far, staying close.



PROJECT CARGO

5 TRANSFORMERS – POWER GENERATION

- Part Charter from Mumbai to Altamira
 - 2 large units @ 831 x 422 x 468cm / 133 tons each
 - 1 unit @ 590 x 526 x 453cm / 122 tons
 - 2 units each 550 x 360 x 420cm 35 tons.
-
- **Break Bulk charter vessel arrangements**
 - **Coordination with local stevedores.**
 - **Marine Survey upon arrival**
 - **Inland transportation from port to site (550kms route)**



Going far, staying close.



FURNACE RELOCATION

3 X 40' FR OOG

88tons / 160cbm / 7 OOG PIECES

INDUSTRIAL FURNACE AND PARTS

- Pick up coordination from the Shipper's site.
- Cargo reception at nominated terminal.
- Transfer of cargo from trucks to 40'FR units
- Loading, Lashing, Securing of cargo onto 40'FR
- Sea freight coordination Spain-Mexico.
- Arrival coordination in Mexico + Delivery.



Going far, staying close.

MANILA METRO PROJECT

32 Sets of 8 Units PASSENGER WAGONS

149tons / 1165cbm per Set of 8 units

For a total 4768tons / 37,280cbm / 256 cars

- Rail coordination from the Shipper's site to the port of departure.
- Cargo reception at terminal, including marine surveyor report.
- Transfer of cargo from railcar to MAFI units
- Loading, Lashing, Securing of wagons to MAFI
- Sea freight coordination Mexico -Philippines



PROJECT CARGO

NEW PRODUCTION LINE –BEVERAGE-

+130 Cntrs (40' HC, 40' OT, 40' FR OOG)

Several crated machinery, In Gauge and Out of Gauge cargo

- Sea freight coordination ex Italy-Mexico
- BL Release with local carriers
- Unloading maneuvers at terminal.
- Unpacking of FR Cntrs at terminal
- Delivery services at destination.
- Project Management.



Going far, staying close.



GAS COMPRESSOR + COOLER

- COMPRESOR: 11.3 x 4.10 x 3.25 mt /60tons
- COOLER : 7.30 x 3.30 x 4.25mt / 12tons

- Break Bulk shipping coordination's using containerized vessel (bed of 6xFlat Racks)
- Coordination with local stevedores.
- Marine Survey at the port of departure
- Inland transportation from Reynosa to Altamira
- Loading on site (Reynosa, Tamps) 2x cranes rental and onsite coordination.
- Export customs Clearance services.

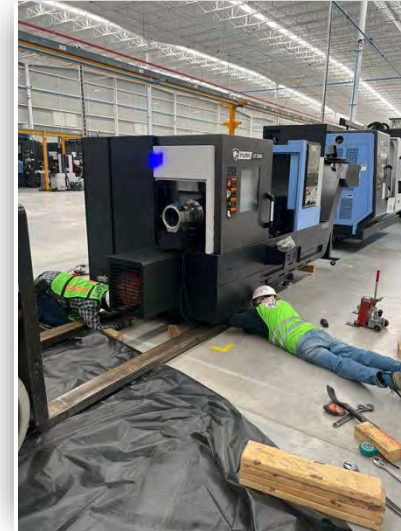


PROJECT CARGO

BEARING PRODUCTION LINE

- Cargo: Oversized Machinery
- From: Chicago, US
- To: Apaseo el Grande, Guanajuato
- Weight: +/- 125.00 tons
- Volume: 385 cbm

- Full factory door-to-door transportation.
- Disassembly process at origin.
- Packing and unpacking maneuvers with Industrial rigging services by SCL .
- Delivery, Positioning at layout, leveling and reassembly at destination.



Going far, staying close.



PROJECT CARGO

6 TRANSFORMERS – POWER GENERATION

- 6 Auxiliary Transformers and accessories
- From: Shanghai, China
- To: Manzanillo, Mexico
- TTL Weight: 225 Tons
- TTL Volume: 633 CBM
- 146 packages in total

- **Sea Freight coordination**
- **Liaising with terminal and broker.**
- **Inland transportation from port to 3 different sites.**



Going far, staying close.

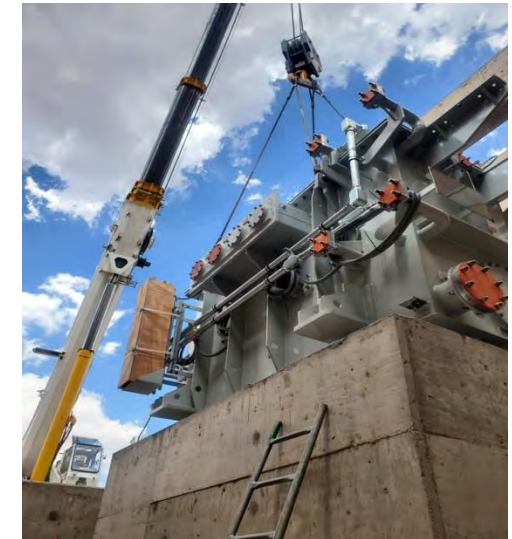


PROJECT CARGO

6 TRANSFORMERS – POWER GENERATION

- 7x20' FR OOG
- 1x40' OT OOG
- 1x20' OT OOG
- 10x40' HC
- Delivered Salamanca, Sauz & Villa Reyes

- 130 Ton Crane rental for cargo's unloading on site, up to foundations.
- Forklift and rigging team to offload containers to warehouse/site



Going far, staying close.

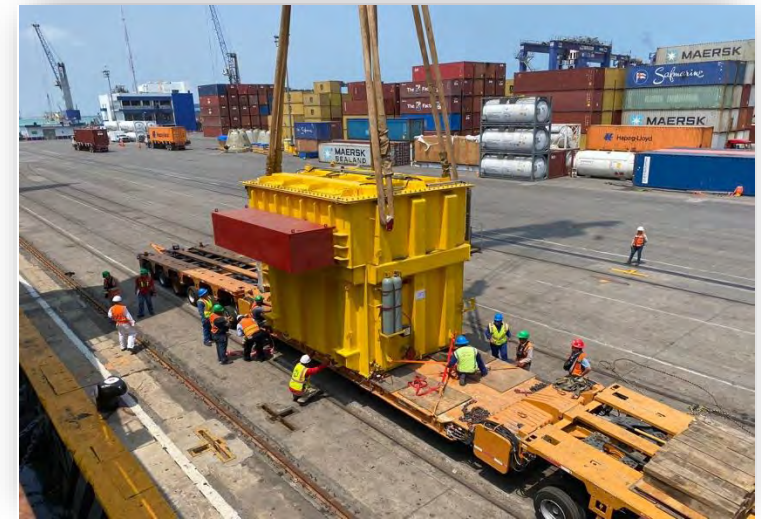


PROJECT CARGO

1 TRANSFORMER – POWER GENERATION

- Cargo: TRAFFO 132 MVA, 34.5 KV/950-1300V
- From: Mundra, India
- To: Altamira, Mexico
- Weight: 135 TONS
- Volume: 185 CBM
- Dims Main Body @ 585 x 534 x 458 cm

- **Break Bulk charter vessel arrangements**
- **Coordination with local stevedores.**
- **Marine Survey upon arrival**
- **Inland transportation from port to site**



Going far, staying close.



PROJECT CARGO

COMBINED CYCLE PLANT

- CCC SALAMANCA 400 kV
 - Cargo: 3 x Electrical Modules
 - From: Spain
 - To: Salamanca, GTO
 - Weight: 110 TONS
 - Volume: 638 CBM
 - Dims Each @ 16,15 x 3,10 x 4,25mts
-
- **Break Bulk coordination's using containerized vessel (bed of Flat Racks)**
 - **Coordination with local stevedores.**
 - **Marine Survey upon arrival**
 - **Inland transportation from port to site**

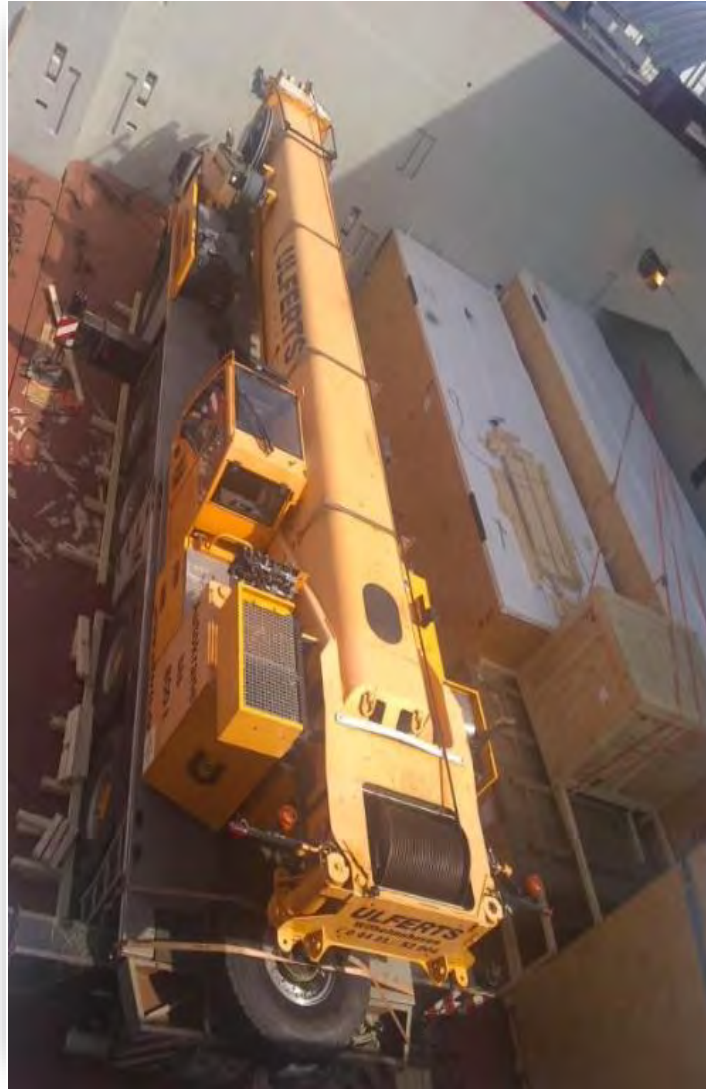


Going far, staying close.



1 MOBILE CRANE & ACCESORIES

- Cargo: GROVE Mobile Crane
 - From: Bremen, Germany
 - To: Veracruz, Mexico
 - Weight: 140 TONS
 - Volume: 250 CBM
 - Dims Main Body 1560 x 300 x 400cm
-
- **Break Bulk shipping port-port**
 - **Coordination with local stevedores.**
 - **Marine Survey upon arrival.**
 - **Customs Clearance**
 - **Inland transportation from port to site**



PROJECT CARGO

COMBINED CYCLE PLANT

- CCC SAN LUIS DE POTOSI 450 MW
 - Cargo: 2 x Electrical Modules
 - From: Spain
 - To: Villa de Reyes, SLP
 - Weight: 79 TONS
 - Volume: 493 CBM
 - Dims Each @ 15,19 x 3,85 x 4,23mts
-
- **Break Bulk coordination's using containerized vessel (bed of Flat Racks)**
 - **Coordination with local stevedores.**
 - **Marine Survey upon arrival**
 - **Inland transportation from port to site**



Going far, staying close.



PROJECT CARGO

TUNNEL BORING MACHINE

- Fortaleza Subway Project
 - Cargo: 4x55tons Locomotives, 8 wagons, 12 railcars, 4 passenger wagons etc
 - From: Guadalajara, Mexico
 - To: Suape, Brazil
 - Weight: +300 TONS
 - Volume: +500 CBM
-
- 220 Tons Crane rental / Loading cargo
 - Inland transportation to port.
 - Coordination with local stevedores.
 - Export Customs Clearance
 - Sea Freight coordination's of several Open Tops, Flat racks and Break Bulk in containerized vessel using FR equipment.



Going far, staying close.



PROJECT CARGO

COMBINED CYCLE PLANT

- Substation 400 kV EL SAUZ
- Cargo: 2 x Electrical Modules
- From: Spain
- To: El Sauz, Queretaro
- Weight: 60.50 TONS
- Volume: 450 CBM
- Dims Each @ 15,18 x 3,55 x 4,15mts

- **Break Bulk coordination's using containerized vessel (bed of Flat Racks)**
- **Coordination with local stevedores.**
- **Marine Survey upon arrival**
- **Inland transportation from port to site**



Going far, staying close.



PROJECT CARGO

EV TRUCKS – RORO SHIPMENT

- Cargo: 100 Electric Trucks
- From: Shanghai, China
- To: Lazaro Cardenas, Mexico
- Weight: 285 tons
- Volume: 3377 cbm

- **Sea freight coordination.**
- **Local stevedores.**
- **Release and port coordination at destination.**



Going far, staying close.



STEEL FABRICATION – FOR OVEN

- Cargo: 1 x Steel fabrication
- From: VERACRUZ
- To: BUENOS AIRES, ARG
- Using 1x40' FR OOG
- Dimensions: 675x430x375cm

- **Pick Up from factory to port, using Lowboy**
- **Transloading from truck to FR container.**
- **Coordination with local stevedores, lashing, securing onto the FR container.**
- **Marine survey.**
- **Sea Freight Transportation.**



PROJECT CARGO

WIND TURBINES

- Cargo: 15 Turbine Blades
- From: China
- To: Puerto Progreso, Mexico
- Weight: 167 TONS each
- Volume: 42,474 CBM each

- **Sea Charter, marine surveyor.**
- **At port unloading and ops.**
- **Coordination with local stevedores.**
- **Road survey due to oversized measures.**
- **Delivery at destination.**



Going far, staying close.



PROJECT CARGO

AIR FREIGHT RAW MATERIAL FOR TIRES

- Cargo: Raw rubber +100 Tons in 8 days
- From: Silao, GTO, MX / MEX Airport, Mexico
- To: GRU/VCP Airport, Brazil
- Weight: 105 TONS
- Volume: 400 CBM

- **Air freight project completion in 8 days.**
- **Cargo and passenger aircraft.**
- **Delivery at two airports.**
- **Pallets packing on site.**
- **Delivery at destination.**



Going far, staying close.



AIR CHARTER MASKS

- Cargo: Masks.
- From: Shanghai China
- To: Lima, Peru
- Weight: 5 TONS
- Volume: 82 CMB

- Air Charter, airport operations.
- Coordination with local ground handlers.
- Customs clearance formalities.
- Delivery at destination.



Going far, staying close.

INDUSTRIAL FANS - SPECIALISED MACHINERY

- Cargo: 2 OOG pieces
- From: Queretaro + POL: Veracruz, Mexico
- To: POD: Antwerp + Venlo, The Netherlands
- Weight: 18 TONS
- Volume: 72 CBM

- **FULL door-to-door logistics.**
- **Road survey and freight (lashing).**
- **Sea freight, marine surveyor.**
- **Loading maneuvers on MAFI for RO/RO vessel by SCL.**
- **Delivery at destination.**



PROJECT CARGO

CNC LATHE

- Cargo: CNC Lathe
- From: Cartagena, Colombia
- To: Houston, USA
- Weight: 50 TONS
- Volume: 64 CMB

- **Sea Freight unloading, at port ops.**
- **Cooperation with Agent at Barcelona.**
- **Unloading maneuvers at terminal.**
- **Cargo lashing.**
- **Delivery at destination.**



Going far, staying close.



PROJECT CARGO

BATTERIES FOR ENERGY INDUSTRY

- Cargo: 14 x SOC Containers
- From: Genoa, Italy
- To: Cartagena, Colombia
- Weight: 36 TONS
- Volume: 135.13 CBM

- Full logistics service for top energy Italian company.
- Sea freight, marine surveyor, at port ops.
- Container unstuffing at terminal.
- Maneuvers with Industrial crane by SCL.
- Delivery at destination.



Going far, staying close.



PROJECT CARGO

CONTINUOUS VACUUM PAN

- Cargo: 10 x 40' FR OOG
- From: Shekou, Shenzhen, China
- To: Manzanillo SSA Terminal
- Weight: 219.37 TONS
- Volume: 1,198.17 CBM

- Sea freight, marine surveyor, at port ops.
- Unloading maneuvers at terminal.
- Cargo lashing.
- Delivery at destination.



Going far, staying close.



PROJECT CARGO

STEEL TANKS/SHAMPOO FACTORY

- Cargo: 3 X 40' FLAT RACK
- From: Barcelona, Spain
- To: Veracruz, Mexico
- Weight: 25 TONS
- Volume: 271 CBM

- **Sea Freight unloading, at port ops.**
- **Cooperation with Agent at Barcelona.**
- **Unstuffing maneuvers at terminal.**
- **Cargo lashing.**
- **Delivery at destination.**



Going far, staying close.



PROJECT CARGO

ELECTRICAL CABINET / MACHINERY

- Cargo: 3 X 40' FLAT RACK (OOG)
- From: Genoa, Italy
- To: Altamira, Mexico
- Weight: 51.875 TONS
- Volume: 247.94 CBM

- **Sea freight, marine surveyor, at port ops.**
- **Cooperation with broker for customs clearance.**
- **Container unpacking at terminal.**
- **Delivery by LOWBOY to destination.**



Going far, staying close.



PROJECT CARGO

FLIGHT SIMULATOR

- Cargo pieces: 1 x Full Flight Simulator, 1 x FTP
- From: Montreal, Canada
- To: Panama City, Panama
- Weight: 150 TONS
- Volume: 220 CBM

- Simulator with value over 1 M USD.
- Sea freight, marine surveyor, at port ops.
- Container unloading at terminal.
- Delivery at destination.



Going far, staying close.



PROJECT CARGO

BEARING PRODUCTION LINE

- Cargo: 10 x 40' HC Containers
- From: Manzanillo
- To: Apaseo el Grande, Guanajuato
- Weight: 75.68 TONS
- Volume: 478 CBM

- Full factory door-to-door transportation.
- Disassembly process at origin.
- Packing and unpacking maneuvers with Industrial crane by SCL .
- Delivery and reassembly at destination.



Going far, staying close.



STEEL YANKEE DRYER PAPER FACTORY

- Cargo: Steel Yankee Dryer
- From: Marina di Carrara, Italy
- To: Veracruz, Mexico
- Weight: 99 TONS
- Volume: 188.26 CBM

- **Sea freight, marine surveyor, at port ops.**
- **Unloading maneuvers and handling at terminal.**
- **Road survey due to oversized measures.**
- **Delivery at destination.**



Going far, staying close.

PROJECT CARGO

AUTOMOTIVE HYDRAULIC PRESS

- Cargo: 45 pieces (press + ancillary parts)
- From: Santos, Brazil
- To: Veracruz, Mexico
- Weight: 280 TONS
- Volume: 649 CBM

- **Sea Freight unloading, at port ops.**
- **Handling and unloading maneuvers at terminal.**
- **Cooperation with Brazilian agent.**
- **Maneuvers with Industrial crane by SCL.**
- **Delivery at destination.**



Going far, staying close.



PROJECT CARGO

STEEL TREATMENT FURNACE

- Cargo: 4 OOG pieces + 3 x40' HC
- From: San Luis Potosi, Mexico
- To: Fremantle, Australia
- Weight: 50 TONS
- Volume: 405 CBM

- On-site disassembly and packing.
- Maneuvers with Industrial crane by SCL.
- Sea Freight and marine surveyor.
- Customs Clearance formalities.
- Delivery at destination (co-op).



Going far, staying close.



LEATHER TANNING MACHINES

- Cargo: Two drums 3.77 m dia. x 5.20 m
- From: Brazil
- To: Mexico
- Weight: 100 TONS
- Volume: 115.48 CBM

- **Sea Freight unloading, at port ops.**
- **Unloading maneuvers at terminal.**
- **Cooperation with Brazilian agent.**
- **Inland freight Altamira-Leon, Gto.**
- **Maneuvers with Industrial crane by SCL.**
- **Delivery and unpacking at destination.**



PROJECT CARGO

16 CABLE DRUMS

- Cargo: 16 Cable Drums
- From: France
- To: Irapuato , Mexico
- Weight: 768 TONS (48 TONS each)
- Volume: 879.68 CMB (54.98 CMB each)

- **Sea freight, marine surveyor, at port ops.**
- **Maneuvers with Industrial crane by SCL.**
- **Road survey due to oversized measures.**
- **Customs Clearance formalities.**
- **Delivery at destination.**



Going far, staying close.



PROJECT CARGO

FIAT CHRYSLER AUTOMOBILE

- Cargo: 4 x RAM Promaster Vans
- From: MEX Factory – MEX Airport
- To: Milan, Italy
- Weight: 21.5 TONS
- Volume: 128.7 CBM

- **Pick up and lashing on site.**
- **Road survey and inland freight to airport.**
- **Air freight, operations and maneuvers at airport.**
- **Customs Clearance formalities.**
- **Delivery at destination.**



Going far, staying close.



CONSTRUCTORA MECO PROJECT

- Cargo: Grinding Polishing Machine
- From: Southampton, UK
- To: Guatemala
- Weight: 70 TONS
- Volume: 250 CMB

- **Sea freight (through Panama), marine surveyor and operations at destination port.**
- **Unloading and handling at terminal.**
- **Cargo lashing.**
- **Road survey due to oversized measures.**
- **Delivery at destination.**



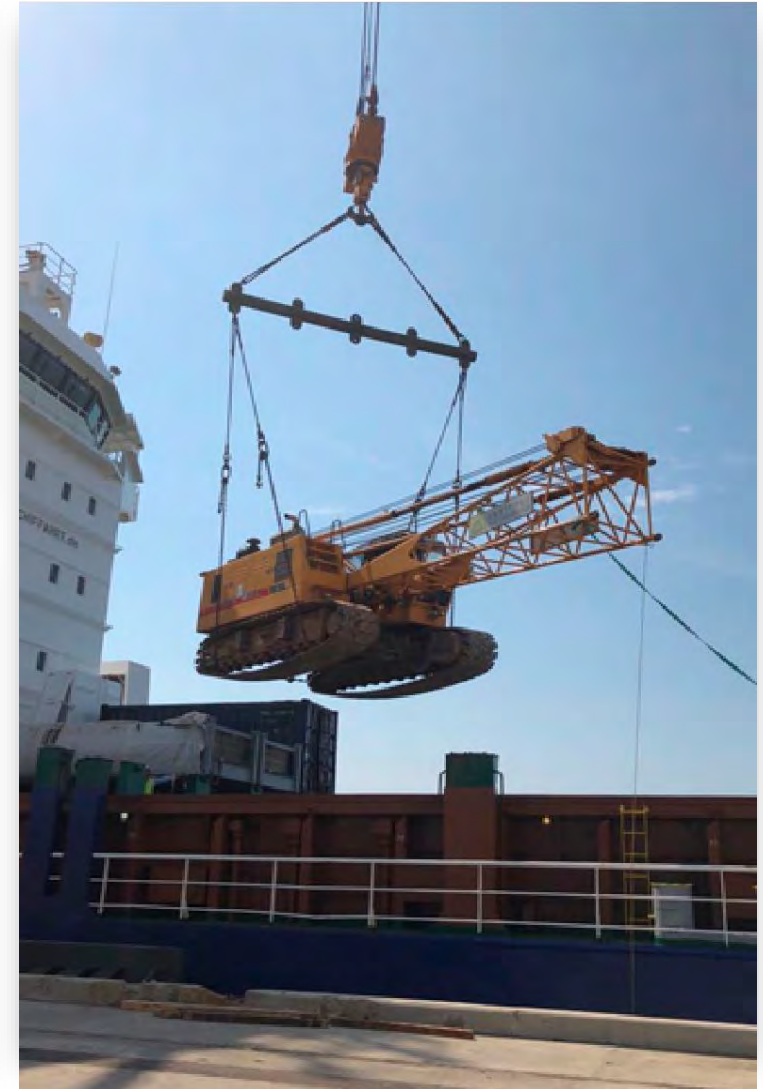
Going far, staying close.

PROJECT CARGO

BUILDING CRANES (EXPORT)

- Cargo: Cranes and their accessories 196 pcs
- From: Cartagena, Colombia
- To: Guanzhou port, China
- Weight: 42 TONS EACH
- Volume: 3100 CBM

- **Pick up on site.**
- **Road survey due to oversized measures.**
- **Sea Charter, marine surveyor, at port ops.**
- **Customs clearance formalities.**
- **Delivery at destination.**



Going far, staying close.



PROJECT CARGO

ENERGY ENGINE AND GENERATOR

- Cargo:
- 1 engine 189.7 CBM / 115 TONS
- 1 Generator 49.72 CBM / 35 TONS
- + 3x40' containers with ancillary parts
- From: Germany
- To: Altamira, Mexico-SLP, Mexico

- **Door-to-door logistics.**
- **Pick up in plant (Germany).**
- **Sea freight, marine surveyor, customs.**
- **Unloading and maneuvers at port.**
- **Inland freight.**
- **Delivery at destination.**



Going far, staying close.



PROJECT CARGO

HYDRAULIC PRESS

- Cargo: 8 packages crown + ancillary parts
- From: Altamira, Mexico
- To: Villa de Reyes, Mexico
- Weight: 80 TONS
- Volume: 220 CBM

- **Sea Freight unloading, at port ops.**
- **Lashing, road survey and inland freight.**
- **Unloading maneuvers on MAFI to RO/RO transport by SCL.**
- **Delivery at destination.**



Going far, staying close.



PROJECT CARGO

STACKER FORKLIFTS (X2)

- Cargo: Disassembled forklifts
- From: Suape, Brazil
- To: Veracruz, Mexico
- Weight: 143.6 TONS
- Volume: 399 CBM

- **Sea Freight unloading, at port ops.**
- **Cooperation with Brazilian agent.**
- **Handling at terminal.**
- **Maneuvers with Industrial crane by SCL.**
- **Delivery at destination.**



Going far, staying close.



GRINDING-POLISHING MACHINE

- Cargo: Grinding Polishing Machine
- From: Southampton, UK
- To: Guatemala
- Weight: 70 TONS
- Volume: 250 CMB

- Sea freight (Through Panama), marine surveyor and arrival at port ops.
- Container unpacking at terminal.
- Cargo lashing.
- Delivery at destination.



DISMANTLED BULK FACTORY

- Cargo: Bulk Factory
- From: US
- To: Hidalgo, Mexico
- Weight: 1032 TONS
- Volume: 2147 CMB

- Full factory door-to-door transport.
- Road survey due to oversized measures.
- Each part was transported separately.
- Packing and unpacking maneuvers with Industrial crane by SCL.
- Delivery and unpacking at destination.



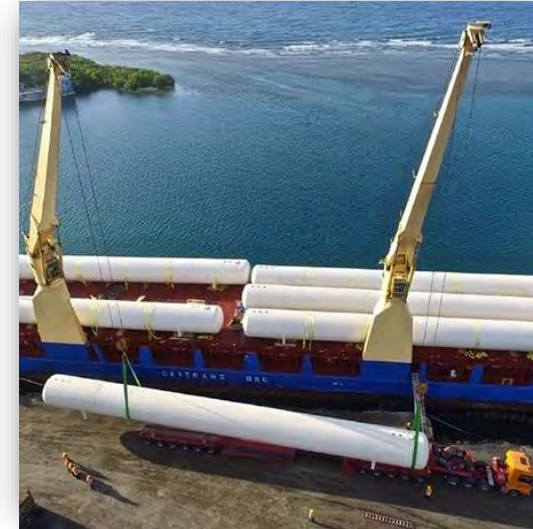
Going far, staying close.

PROJECT CARGO

STORAGE TANKS FOR LP GAS

- Cargo: Storage Tanks for LP Gas
- From: Guadalajara, Mexico
- To: Brazil
- Weight: 11,900 TONS
- Volume: 8,740 CMB

- **Sea freight, marine surveyor, at port ops.**
- **Maneuvers with Industrial crane by SCL.**
- **Road survey due to oversized measures.**
- **Customs clearance formalities.**
- **Delivery at destination.**



Going far, staying close.



PROJECT CARGO

AUTOMOTIVE MACHINERY

- Cargo: 3x40' FR OOG + 7x40' HC of Automotive machinery
- From: Altamira, Mexico
- To: San Luis Potosi, Mexico
- Weight: 115 TONS
- Volume: 360 CBM

- **Sea Freight unloading, at port ops.**
- **Container unpacking at terminal.**
- **Packing and lashing by SCL.**
- **Road survey and freight.**
- **Delivery and unpacking at destination.**



Going far, staying close.



CARPET THERMOFORMING LINE

- Cargo: Carpet Thermoforming Line
- From: Shanghai, China
- To: Veracruz
- Weight: 350 TONS
- Volume: 780 CMB

- **Sea freight, marine surveyor.**
- **Maneuvers with Industrial crane by SCL.**
- **Coordination with local stevedores.**
- **Road survey and freight (lashing).**
- **Delivery at destination (co-op).**



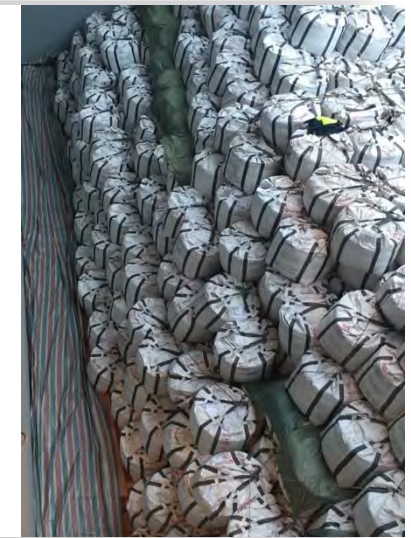
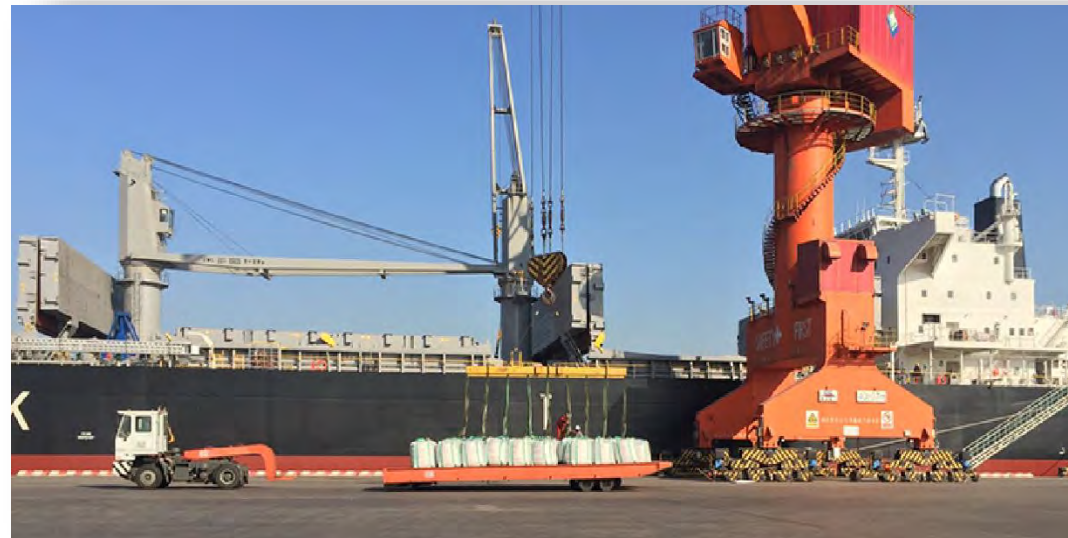
Going far, staying close.

PROJECT CARGO

SANDBAGS OF SILICA (PETROLEUM DRILLING)

- Cargo: Silica sandbags
- From: Xingang, China
- To: Bahía Blanca, Argentina
- Weight: 5,000 TONS
- Volume: 499 CBM

- **Port-to-port logistics.**
- **Sea Charter, marine surveyor, port ops.**
- **Customs clearance formalities.**
- **Delivery at destination port.**



Going far, staying close.



PROJECT CARGO

MECHANICAL TRANSFER PRESS

- Cargo: 1 500 T Mechanical Transfer Press
- From: Mumbai, India
- To: Altamira, Mexico
- Weight: 1500 TONS
- Volume: 3744 CMB

- **Sea Charter, marine surveyor, unloading, at port ops.**
- **Handling and unloading maneuvers at terminal.**
- **Road survey due to oversized measures.**
- **Delivery at destination.**



Going far, staying close.



PROJECT CARGO

DRILLING EQUIPMENT FOR CONSTRUCTION

- Cargo: Drilling
- From: Veracruz, Mexico
- To: Buenos Aires, Argentina
- Weight: 28 TONS
- Volume: 16 CBM

- Road survey due to oversized measures.
- Lashing at terminal.
- Sea freight, marine surveyor.
- Customs Clearance.
- Delivery at destination.



Going far, staying close.



PROJECT CARGO

20 CABLE DRUMS

- From: Amberes, Belgium
- To: Mexicali, Mexico (Through Ensenada, Mexico)
- Weight: 2500 TONS (48 TONS each)
- Volume: 2749 CMB (54.98 CMB each)

- Sea freight, marine surveyor, at port ops.
- Maneuvers with Industrial crane by SCL.
- Road survey due to oversized measures.
- Customs Clearance formalities.
- Delivery at destination.



Going far, staying close.



EXEN BRAZIL DOMO BOILER 4 TONS

- From: Santos, Brazil
- To: David, Panama
- Weight: 100 TONS
- Volume: 199 CBM

- Sea freight, marine surveyor and arrival at port ops.
- Container unpacking at terminal.
- Cargo lashing.
- Delivery at destination.



ANTIQUUE VEHICLES

- Cargo: Vehicle
- From: UK
- To: Mexico
- Weight: 32 TONS
- Volume: 267 CBM

- **Packing and lashing by SCL.**
- **Air freight, airport ops, maneuvers.**
- **Road freight Airport of Mexico City to warehouse.**



Going far, staying close.

PROJECT CARGO

50 CABLE DRUMS FOR CFE

- From: Antwerp, Belgium
- To: Altamira, Mexico/ Guanajuato, Mexico
- Weight: 2500 TONS (48 TONS each)
- Volume: 2749 CMB (54.98 CMB each)

- **Sea freight, marine surveyor, at port ops.**
- **Maneuvers with Industrial crane by SCL.**
- **Road survey due to oversized measures.**
- **Delivery at destination.**



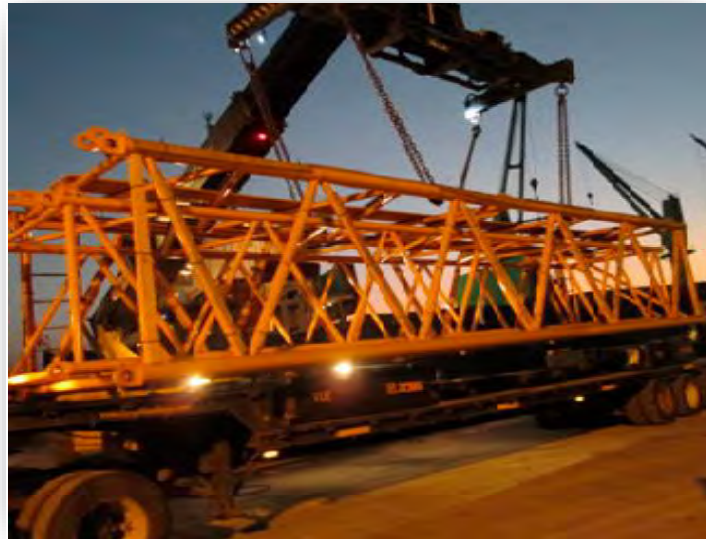
Going far, staying close.



BUILDING CRANES (IMPORT)

- Cargo: Cranes and their accessories 196 pcs
- From: Shanghai, China
- To: Cartagena, Colombia
- Weight: 42 TONS EACH
- Volume: 3100 CBM

- **Collection on site.**
- **Road survey due to oversized measures.**
- **Sea Charter, marine surveyor, port ops.**
- **Customs clearance.**
- **Delivery at destination.**



PROJECT CARGO

INDUSTRIAL VALVES

- Cargo: Cranes and their accessories 196 pcs
- From: Shanghai, China
- To: Yucatan, Mexico
- Weight: 1040 TONS
- Volume: 2200 CBM

- **Sea Freight unloading, at port ops.**
- **Road survey and freight (lashing).**
- **Unloading maneuvers on MAFI due to RO/RO transport by SCL.**
- **Delivery at destination.**



Going far, staying close.



CHARTER STORAGE TANKS FOR LP GAS

- Cargo: Storage Tanks for LP Gas
- From: Shanghai, China
- To: Coatzacoalcos, Veracruz, Mexico
- Weight: 135.5 TON
- Volume: 1,150 CBM

- **Sea Charter, marine surveyor, at port ops.**
- **Maneuvers with Industrial crane by SCL.**
- **Coordination with local stevedores.**
- **Road survey due to oversized measures.**
- **Customs Clearance.**
- **Delivery at destination.**



PROJECT CARGO

INTERJET AIRCRAFT ENGINE

- Cargo: Air turbine repair parts.
- From: México
- To: Miami, USA
- Weight: 32 TONS
- Volume: 100 CBM

- Turbine parts worth over 1 M USD.
- Container packing.
- Cargo lashing.
- Air freight project.
- Delivery at Airport of Miami.



Going far, staying close.



PROJECT CARGO

PART CHARTER

- Cargo: Part Charter with 5 Over-length and overweighed pieces
- From: Genoa, Italy
- To: Coatzacoalcos, Veracruz, Mexico
- Weight: 280 TON
- Volume: 320 CBM

- **Door-to-door transport.**
- **Sea Part Charter , at port ops.**
- **Container unpacking at terminal.**
- **Packing and lashing by SCL.**
- **Road survey and freight.**
- **Delivery at destination.**



Going far, staying close.



PROJECT CARGO

35 LUXURY CARS

- Cargo: 35 Luxury Cars
- From: Mexican Shippers
- To: Asia
- Weight: 64.75 TONS
- Volume: 378 CMB

- **Pick up and lashing on site.**
- **Road survey and freight to port.**
- **Sea freight, marine surveyor, at port ops.**
- **Packing and lashing by SCL.**
- **Delivery at destination.**



Going far, staying close.



PROJECT CARGO

CAV AEROSPACE

- Cargo: Aerospace parts
- From: Chihuahua, Mexico
- To: Durham, England
- Weight: 16 TONS
- Volume: 32 CMB

- **FULL door-to-door logistics.**
- **Packing and lashing by SCL.**
- **Collection in plant (Mexico) Road freight to port.**
- **Sea freight, marine surveyor, at port ops.**
- **Road freight and delivery at warehouse.**



Going far, staying close.



PROJECT CARGO

PIPELINE FOR CUÑADO 3500 CMB

- Cargo: Air turbine repair parts.
- From: Nanjing China
- To: Paita / Callao, Peru
- Weight: 15,000 TONS
- Volume: 3,500 CMB

- **Sea Charter, marine surveyor**
- **At port unloading and ops**
- **Road survey due to oversized measures**
- **Delivery at destination**



Going far, staying close.



ESTER ROA STADIUM / FABRIC ARCHITECTURE

- Cargo: 82 X 40HC Steel Structures, Architectural Fabric Membrane
- From: Manzanillo, Mexico
- To: San Vicente, Chile
- Weight: 130,000 TONS
- Volume: 78,230 CMB

- **Packing and port operations.**
- **Sea Freight and marine surveyor.**
- **Customs Clearance.**
- **Road survey due to oversized measures.**
- **Delivery at destination (co-op).**



Going far, staying close.

ROTARY CEMENT KILN GIRTH GEAR

- From: Le Havre, Francia.
- To: CDMX, Mexico (Through Veracruz, Mexico)
- Weight: 30 TON
- Volume: 21.2 CBM

- **Sea freight, marine surveyor, at port ops.**
- **Packing and lashing by SCL.**
- **Road survey and freight.**
- **Delivery and unpacking at destination.**



STEEL RING / CEMENT INDUSTRY

- Cargo: Steel Ring and their accessories
- From: Tianjin, China
- To: Manzanillo, Mexico / Panama
- Weight: 32 TONS
- Volume: 60 CMB

- **Sea freight, marine surveyor, at port ops.**
- **Packing and lashing by SCL.**
- **Road survey and freight.**
- **Delivery and unpacking at destination.**



LA PORTADA STADIUM /FABRIC ARCHITECTURE

- Cargo: Steel Structures, Membrane Textile and Paint Tool
- From: Manzanillo, Mexico
- To: Valparaiso/La Serena, Chile
- Weight: 120,000 TONS
- Volume: 72,840 CMB

- **Packing and port operations.**
- **Sea Freight and marine surveyor.**
- **Customs Clearance.**
- **Road survey due to oversized measures.**
- **Delivery at destination (co-op).**



Going far, staying close.

CHICOASEN'S HYDROELECTRIC POWER PLANT

- Cargo: Entire Hydroelectric Power Plant
- From: France
- To: Chiapas, Mexico
- Weight: 12,000 TONS
- Volume: 15,000 CMB

- **Door-to-door transport.**
- **Sea Charter, marine surveyor, at port ops.**
- **Maneuvers with Industrial crane by SCL.**
- **Coordination with local stevedores.**
- **Road survey due to oversized measures.**
- **Customs Clearance.**
- **Delivery at destination.**



THERMOELECTRIC POWER PLANT

- From: France, Germany, Brazil and Croatia
- To: Tuxpan, Mexico
- Weight: 90,000 TONS
- Volume: 58000 CMB

- **Power plan parts transported via sea charters.**
- **Marine Surveyor, Customs Clearance.**
- **Full international logistics.**
- **Transport Methods: Sea, air and road.**
- **Disassembly and Reassembly.**
- **Delivery at final destination.**



PARTS OF CONDENSERS AND TURBINE

- Cargo: Condensers and turbine
- From: Tula, Mexico
- To: Bandar Abbas, Iran
- Weight: 12,000 TONS
- Volume: 7,840 CMB

- **Sea Charter, marine surveyor, at port ops.**
- **Road survey due to oversized measures.**
- **Customs Clearance.**
- **Delivery at destination.**



CALIFORNIA NEW STEEL FACTORY

- From: Sidernaal Bilbao, Spain
- To: Mexicali, Mexico (through Ensenada Port, Mexico)
- Weight: 12,000 TONS
- Volume: 15,000 CMB

- **Sea Charter, marine surveyor, at port ops.**
- **Road survey due to oversized measures.**
- **Customs Clearance.**
- **Delivery at destination.**





We guarantee your cargo security



**Door to Door
Insurance**



**Coverage form
BASIC to ALL RISK**



**Policies with the
lowest deductibles**



**We work with the
highest - level insurers**



**Accompaniment at the
time of your claim**

Cargo Insurance





- We complete your paperwork so that your cargo arrives on time.



Network of customs brokers
(main ports, airports and
border crossing points)



Foreign Trade Programs
Consulting (IMMEX, classification
of entire projects, etc.)



HS Code Classification



Cargo inspections at origin

Customs Clearance





Supporting your logistics with quality warehousing



Bonded Warehousing



Warehousing



Packing, labeling and kitting



Picking and Distribution



Cross Dock



Warehouse And Distribution



Your cargo always visible

We offer a Web Tracking service where you can check the details of your shipments

Keep your cargo always visible with real - time geolocation, making transparency your best ally for an agile and secure supplychain.

SCLGo
allows you to



Customizable Reports

Create customizable reports with scheduled automatic delivery.



Online Documentation

Shipping documents BL, AWB, Packing lists, commercial invoices.



Shipment Status:

Shipment date, location, analytics



Solutions adapted to your industry

Tailored solutions represent a strategic approach to addressing unique challenges, meeting customer needs, and driving innovation



Automotive




Retail




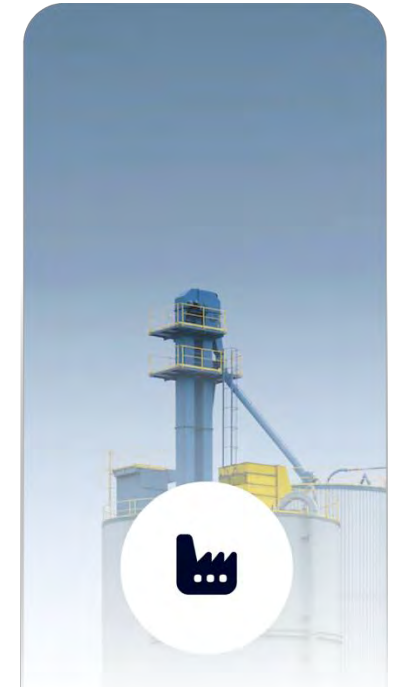
Construction



Perishables



Energy



Industrial



Committed to excellence

Our certifications support the quality and reliability of our logistics services. We comply with the highest standards to offer peace of mind and security.

Certifications



Associations





Our clients

More than 15 years leading businesses to safe harbor



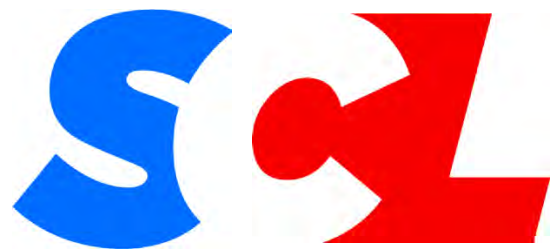


Please send us your sales leads and quote requests to:

Santiago Vasquez
Project Cargo Director
+52 442 4711463
santiago.vasquez@seacargo.com

Commercial Team:
projects.mx@seacargo.com
Operations Team:
operaciones.cpy@seacargo.com





*Going far
staying close.*