



PROLOG[®]

Make Your Next **BIG** Move

**YOUR MODERN
LOGISTIC PARTNER**

**& formed with a vision of providing
complete end-to-end Logistics Solutions.**

PROJECT EXECUTIONS

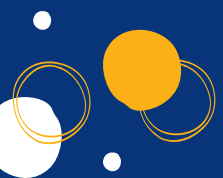
POL : SHANGHAI & TIANJIN, CHINA

POD : PARADIP PORT, INDIA

VOLUME : 16,258 FRT (209 PKGS)

HEAVY LIFT : 8 X 72 MT + 2 X 73.5 MT,
2 X 65 MT + 1 X 55 MT
1 X 33 MT.

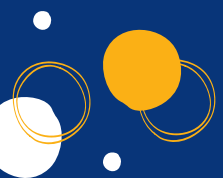
DESCRIPTION : ENGINEERING GOODS AND
ACCESSORIES



PROJECT EXECUTIONS

SCOPE OF WORK :-

- OCEAN FREIGHT FROM SHANGHAI & TIANJIN, CHINA TO PARADIP PORT, INDIA.



PROJECT EXECUTIONS

POL : SHANGHAI, CHINA
POD : PARADIP PORT, INDIA
VOLUME : 7,290 FRT (30 PKGS)
HEAVY LIFT : 1 X 114 MT (34M LENGTH),
2 X 110 MT (24M LENGTH),
1 X 90 MT (27M LENGTH),
1 X 88 MT (28M LENGTH),
1 X 85 MT, 2 X 64 MT
(24M LENGTH), 2 X 60 MT,
1 X 54 MT, 1 X 53 MT, 1 X 42 MT,
1 X 32 MT.



PROJECT EXECUTIONS

DESCRIPTION: ENGINEERING GOODS AND ACCESSORIES

SCOPE OF WORK :-

- OCEAN FREIGHT FROM SHANGHAI, CHINA TO PARADIP PORT, INDIA.
- EXWORK AT ORIGIN PORT

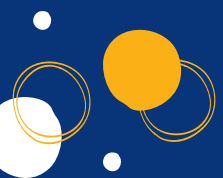


PROJECT EXECUTIONS

POL : MUMBAI PORT, INDIA
POD : DAMMAM, SAUDI ARABIA
VOLUME : 2,562 FRT (12 PKGS)
HEAVY LIFT : 12 X 32 MT
DESCRIPTION : PIPE BENDING MACHINE

SCOPE OF WORK : -

- OCEAN FREIGHT FROM MUMBAI PORT, INDIA TO DAMMAM, SAUDI ARABIA



PROJECT EXECUTIONS

POL : TIANJIN, CHINA

POD : KOLKATA PORT, INDIA

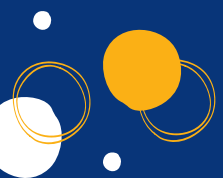
VOLUME : 4,070 FRT (13 PKGS)

HEAVY LIFT : 8 X 38 MT (L 4.8 & H 20 METER)

DESCRIPTION : ENGINEERING GOODS AND
ACCESSORIES

SCOPE OF WORK : -

- OCEAN FREIGHT FROM TIANJIN, CHINA
TO KOLKATA PORT, INDIA



PROJECT EXECUTIONS

POL : MUMBAI, INDIA

POD : JAKARTA PORT, INDONESIA

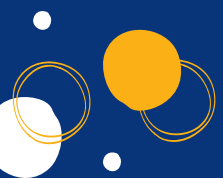
VOLUME : 1,500 FRT (515 PKGS)

DIMENSIONS : 4 PKGS 18 METERS IN LENGTH

DESCRIPTION : STRUCTURAL & DUCTING ITEMS

SCOPE OF WORK : -

- EXPORT CUSTOM CLEARANCE & PORT HANDLING AT MUMBAI PORT, INDIA
- OCEAN FREIGHT FROM MUMBAI PORT, INDIA TO JAKARTA PORT, INDONESIA



PROJECT EXECUTIONS

POL : SHANGHAI, CHINA

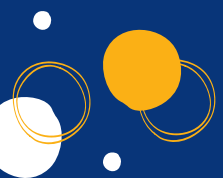
POD : MUMBAI PORT, INDIA

HEAVY LIFT : 1 X 77.5 MT

DESCRIPTION : MACHINERY & ACCESSORIES

SCOPE OF WORK : -

- OCEAN FREIGHT FROM SHANGHAI, CHINA TO MUMBAI PORT, INDIA

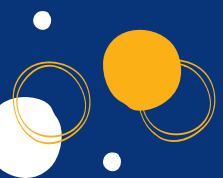


PROJECT EXECUTIONS

POL : MUMBAI PORT, INDIA
POD : LAEMCHABANG, THAILAND
HEAVY LIFT : 1 X 55 MT
DIMENSIONS : 23.3 X 3.5 X 3.6 (METER)
DESCRIPTION : ROTARY DRYER

SCOPE OF WORK : -

- PORT HANDLING AT POL (OFFLOADING AND RELOADING ONTO MAFI AND DOING LASHING ARRANGEMENTS ON MAFI).
- OCEAN FREIGHT FROM MUMBAI PORT, INDIA TO LAEMCHABANG, THAILAND



PROJECT EXECUTIONS

POL : MUMBAI, INDIA

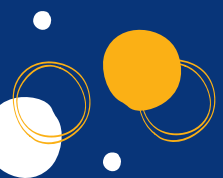
POD : JAKARTA PORT, INDONESIA

VOLUME : 626 FRT (05 PKGS)

DESCRIPTION : KETTLE SHELL

SCOPE OF WORK : -

- OCEAN FREIGHT FROM MUMBAI PORT, INDIA TO JAKARTA PORT, INDONESIA



PROJECT EXECUTIONS

POL : MUMBAI, INDIA

POD : PORT OF DUMAI, INDONESIA

VOLUME : 408 FRT (11 PKGS)

HEAVY LIFT : 1 X 48 MT, 1 X 32 MT.

DESCRIPTION : BOILER & ACCESSORIES

SCOPE OF WORK : -

- EXPORT CUSTOM CLEARANCE & PORT HANDLING AT MUMBAI PORT, INDIA
- OCEAN FREIGHT FROM MUMBAI PORT, INDIA TO PORT OF DUMAI, INDONESIA



PROJECT EXECUTIONS

POL : SHANGHAI, CHINA

POD : MUMBAI, INDIA

VOLUME : 300 FRT (4 PKGS)

DIMENSIONS : 13.4 X 2.71 X 2.86 (METER),
12.6 X 2.71 X 2.86 (METER),
7.5 X 2.5 X 2.82 (METER),
4.0 X 3.4 X 3.4 (METER),

DESCRIPTION : MACHINERY GOODS

SCOPE OF WORK : -

- OCEAN FREIGHT FROM SHANGHAI, CHINA TO MUMBAI, INDIA



PROJECT EXECUTIONS

POL : SHANGHAI, CHINA

POD : MUMBAI PORT, INDIA

HEAVY LIFT : 4 X 38 MT

DESCRIPTION : SLAG POT

SCOPE OF WORK : -

- OCEAN FREIGHT FROM SHANGHAI, CHINA TO MUMBAI PORT, INDIA
- PORT HANDLING AT MUMBAI PORT.



PROJECT EXECUTIONS

POL : TIANJIN, CHINA

POD : KOLKATA PORT, INDIA

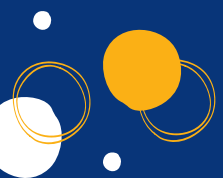
VOLUME : 3,185 FRT (213 PKGS)

HEAVY LIFT : 1 X 52 MT, 1 X 32 MT, 3 X 30 MT.

DESCRIPTION : MACHINERY GOODS

SCOPE OF WORK : -

- OCEAN FREIGHT FROM TIANJIN, CHINA
TO KOLKATA PORT, INDIA

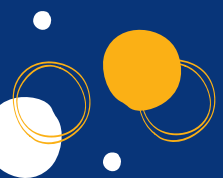


PROJECT EXECUTIONS

POL : SHANGHAI, CHINA
POD : KOLKATA PORT, INDIA
VOLUME : 1905 FRT (107 PKGS)
DESCRIPTION : MACHINERY CARGO

SCOPE OF WORK : -

- OCEAN FREIGHT FROM SHANGHAI, CHINA TO KOLKATA PORT, INDIA



PROJECT EXECUTIONS

POL : TIANJIN, CHINA

POD : KOLKATA PORT, INDIA

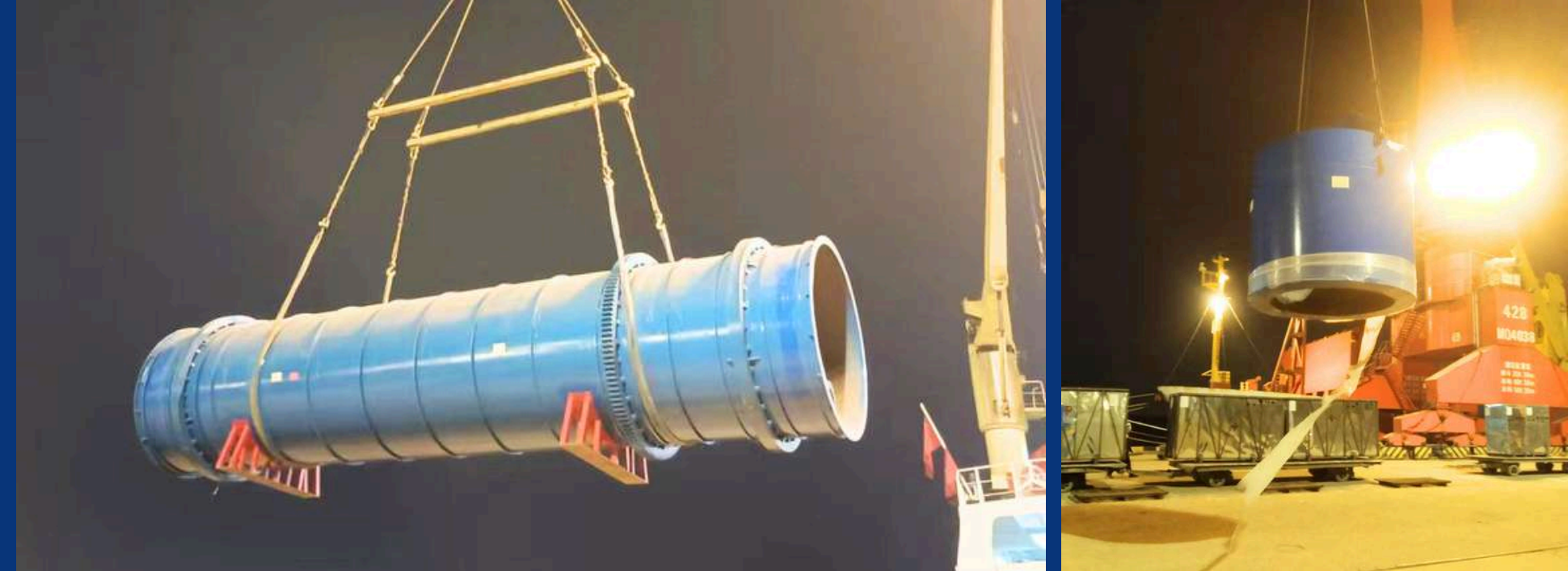
VOLUME : 534 FRT (6 PKGS)

HEAVY LIFT : 2 X 32 MT & SPARE PARTS

DESCRIPTION : MACHINERY GOODS

SCOPE OF WORK : -

- OCEAN FREIGHT FROM TIANJIN, CHINA
TO KOLKATA PORT, INDIA



PROJECT EXECUTIONS

POL : SHANGHAI, CHINA

POD : MUMBAI PORT, INDIA

HEAVY LIFT : 4 X 37 MT

DESCRIPTION : SLAG POT

SCOPE OF WORK : -

- OCEAN FREIGHT FROM SHANGHAI, CHINA TO MUMBAI PORT, INDIA
- PORT HANDLING AT MUMBAI PORT.



PROJECT EXECUTIONS

POL : SHANGHAI, CHINA

POD : MUMBAI, INDIA

VOLUME : 2,110 FRT (12 PKGS)

HEAVY LIFT : 6 X 32 MT, 6 X 30 MT.

DIMENSIONS : 6 * 17.93 X 3.24 X 3.15 (METER),
6 * 15.45 X 3.24 X 3.15 (METER),

SCOPE OF WORK : -

- OCEAN FREIGHT FROM SHANGHAI, CHINA TO MUMBAI, INDIA
- PORT HANDLING & IMPORT CUSTOMS CLEARANCE & TRANSPORTATION TILL CONSIGNEE FACTORY.



PROJECT EXECUTIONS

POL : KOBE, JAPAN

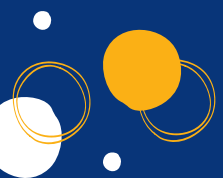
POD : MUMBAI PORT, INDIA

HEAVY LIFT : 1 X 35 MT

DESCRIPTION : USED MACHINERY

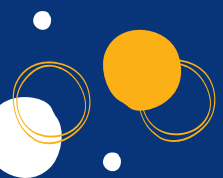
SCOPE OF WORK : -

- OCEAN FREIGHT FROM KOBE, JAPAN TO MUMBAI PORT, INDIA
- IMPORT CUSTOMS CLEARANCE AND PORT HANDLING AT MUMBAI PORT



PROJECT EXECUTIONS

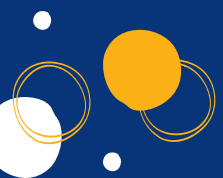
POL : MUMBAI PORT, INDIA
POD : PORT OF DUMAI, INDONESIA
VOLUME : 1,012 FRT (2 PKGS)
HEAVY LIFT : 1 X 34 MT, 1 X 30 MT.
DIMENSIONS : 25.48 X 4.50 X 4.01 (METER),
29.12 X 4.50 X 4.21 (METER),
DESCRIPTION : ENGINEERING GOODS AND
ACCESSORIES



PROJECT EXECUTIONS

SCOPE OF WORK :-

- PICKUP FROM SHIPPER FACTORY & MOVEMENT TO MUMBAI PORT, INDIA
- CUSTOM CLEARANCE & PORT HANDLING AT MUMBAI PORT, INDIA
- OCEAN FREIGHT FROM MUMBAI PORT, INDIA TO PORT OF DUMAI, INDONESIA



PROJECT EXECUTIONS

POL : SHANGHAI, CHINA

POD : KANDLA, INDIA

VOLUME : 2,985 FRT

DIMENSIONS : 36.75 X 5.7 X 3.13 (METER),
36.7 X 4.05 X 4.3 (METER),
36.75 X 5.7 X 3.77 (METER),
36.65 X 4.09 X 3.83 (METER)

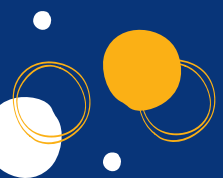
DESCRIPTION : MOULD WITH STANDARD
ACCESSORIES & PARTS OF
WIND OPERATED ELECTRICITY
GENERATOR



PROJECT EXECUTIONS

SCOPE OF WORK :-

- PICKUP FROM SHIPPER FACTORY & MOVEMENT TO SHANGHAI PORT
- CUSTOM CLEARANCE & PORT HANDLING AT SHANGHAI PORT
- OCEAN FREIGHT FROM SHANGHAI, CHINA TO KANDLA, INDIA



PROJECT EXECUTIONS

POL : ANTWERP, BELGIUM
POD : MUMBAI PORT, INDIA
HEAVY LIFT : 2 X 59 MT, 2 X 57 MT (4 PKGS)
DESCRIPTION : ENGINEERING GOODS AND ACCESSORIES

SCOPE OF WORK :-

- OCEAN FREIGHT FROM ANTWERP, BELGIUM TO MUMBAI PORT, INDIA
- PORT HANDLING AT MUMBAI PORT

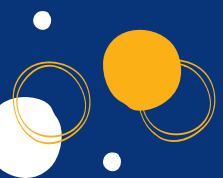


PROJECT EXECUTIONS

POL : MARGHERA , ITALY
POD : JEDDAH, SAUDI ARABIA
VOLUME : 572 FRT (8 PKGS)
HEAVY LIFT : 2 X 83 MT
DESCRIPTION : ENGINEERING GOODS AND
ACCESSORIES

SCOPE OF WORK : -

- OCEAN FREIGHT FROM MARGHERA, ITALY TO JEDDAH, SAUDI ARABIA.
- LOADING & UNLOADING SURVEY.
- POD CUSTOMS CLEARANCE & TRANSPORTATION TILL CONSIGNEE FACTORY.



PROJECT EXECUTIONS

POL : SHANGHAI, CHINA

POD : KANDLA, INDIA

VOLUME : 5,243 FRT

HEAVY LIFT : 1 X 42 MT, 1 X 40 MT

DIMENSIONS : 4 * 36.7 X 5.7 X 4.5 (METER),
4 * 35.6 X 4.1 X 3.8 (METER),
1 * 34.8 X 2.6 X 1.1 (METER),
4 * 32.7 X 4.1 X 3.8 (METER)

DESCRIPTION : MOULD WITH STANDARD
ACCESSORIES & PARTS OF
WIND OPERATED ELECTRICITY
GENERATOR



PROJECT EXECUTIONS

SCOPE OF WORK :-

- PICKUP FROM SHIPPER FACTORY & MOVEMENT TO SHANGHAI PORT
- CUSTOM CLEARANCE & PORT HANDLING AT SHANGHAI PORT
- OCEAN FREIGHT FROM SHANGHAI, CHINA TO KANDLA, INDIA



PROJECT EXECUTIONS

POL : SHANGHAI, CHINA

POD : KANDLA, INDIA

VOLUME : 2295 FRT

DIMENSIONS : 36.8 X 5.7 X 2.9 (METER),
36.1 X 3.7 X 4.0 (METER),
36.7 X 5.7 X 3.1 (METER),
36.1 X 3.7 X 3.1 (METER)

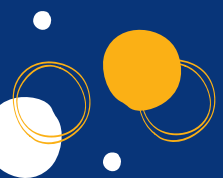
DESCRIPTION : MOULD WITH STANDARD
ACCESSORIES & PARTS OF
WIND OPERATED ELECTRICITY
GENERATOR



PROJECT EXECUTION

SCOPE OF WORK :-

- PICKUP FROM SHIPPER FACTORY & MOVEMENT TO SHANGHAI PORT
- CUSTOM CLEARANCE & PORT HANDLING AT SHANGHAI PORT
- OCEAN FREIGHT FROM SHANGHAI, CHINA TO KANDLA, INDIA



PROJECT EXECUTIONS

POL : SHANGHAI, CHINA

POD : KANDLA PORT, INDIA

VOLUME : 2363 FRT (33 PKGS)

HEAVY LIFT : 1 X 150 MT, 1 X 140 MT, 1 X 117 MT,
1 X 51 MT, 1 X 43 MT, 1 X 36 MT

DESCRIPTION : MACHINERY AND SPARE
PARTS

SCOPE OF WORK : -

- OCEAN FREIGHT FROM SHANGHAI, CHINA TO KANDLA PORT, INDIA.



PROJECT EXECUTIONS

POL : GENOA, ITALY

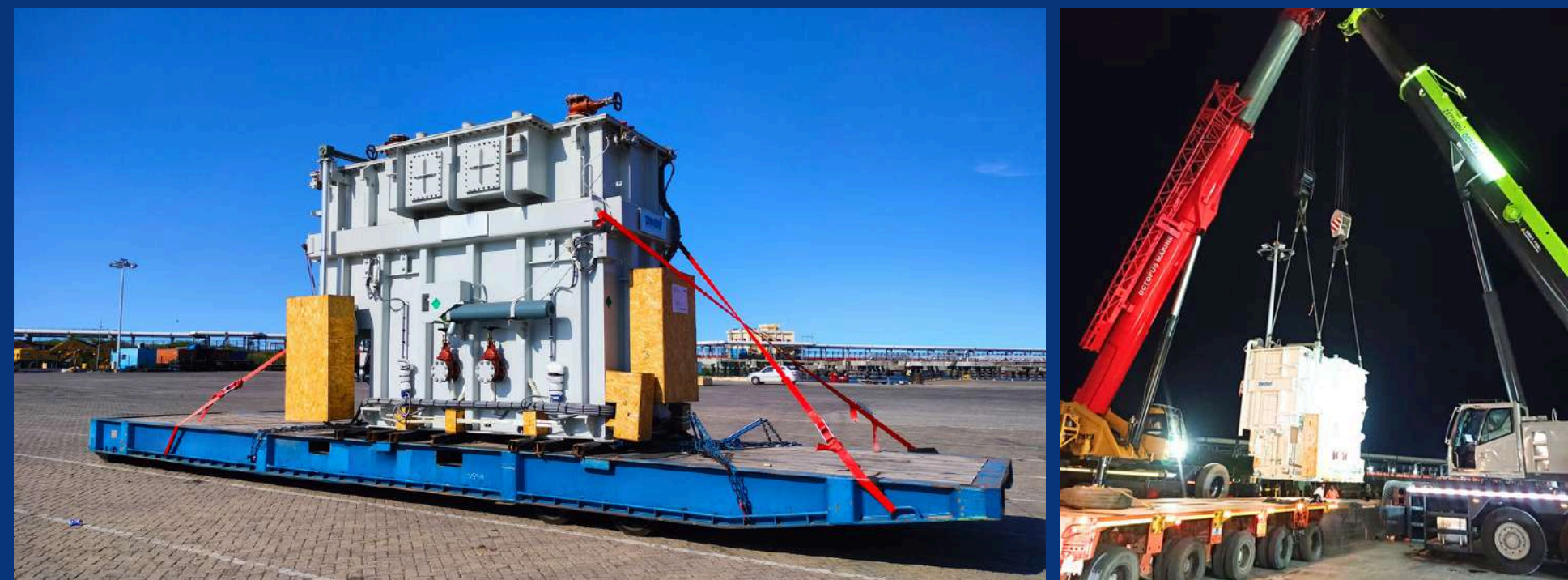
POD : ENNORE PORT, INDIA

HEAVY LIFT : 2 X 63 MT.

DESCRIPTION : POWER TRANSFORMER
MACHINE

SCOPE OF WORK : -

- OCEAN FREIGHT FROM GENOA, ITALY TO ENNORE PORT, INDIA
- CUSTOMS CLEARANCE & PORT HANDLING AT ENNORE PORT, INDIA



PROJECT EXECUTIONS

POL : DALIAN, CHINA

POD : PARADIP PORT, INDIA

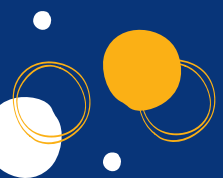
VOLUME : 327 FRT (9 PKGS)

HEAVY LIFT : 1 X 125 MT + 1 X 124 MT

DESCRIPTION : ENGINEERING GOODS AND
ACCESSORIES

SCOPE OF WORK : -

- OCEAN FREIGHT FROM DALIAN, CHINA
TO PARADIP PORT, INDIA.



PROJECT EXECUTIONS

POL : DALIAN, CHINA

POD : MUMBAI PORT, INDIA

VOLUME : 698 FRT (18 PKGS)

HEAVY LIFT : 2 X 136 MT + 2 X 135 MT

DESCRIPTION : ENGINEERING GOODS AND
ACCESSORIES

SCOPE OF WORK : -

- OCEAN FREIGHT FROM DALIAN, CHINA
TO MUMBAI PORT, INDIA.



PROJECT EXECUTIONS

POL : SHANGHAI, CHINA
POD : VIZAG PORT, INDIA
VOLUME : 6,528 FRT (284 PKGS)
HEAVY LIFT : 1 X 68 MT, 2 X 50 MT, 1 X 48 MT,
4 X 47 MT, 1 X 44 MT, 1 X 43 MT,
1 X 40 MT, 1 X 31 MT, 1 X 30 MT
DESCRIPTION : ENGINEERING GOODS AND
ACCESSORIES

SCOPE OF WORK : -

- OCEAN FREIGHT FROM SHANGHAI,
CHINA TO VIZAG PORT, INDIA



PROJECT EXECUTIONS

POL : GENOA, ITALY

POD : MUMBAI PORT, INDIA

HEAVY LIFT : 1 X 64 MT + 1 X 63 MT.

DESCRIPTION : ENGINEERING GOODS AND
ACCESSORIES

SCOPE OF WORK : -

- PICKUP FROM SHIPPER FACTORY & MOVEMENT TO GENOA PORT
- CUSTOM CLEARANCE & PORT HANDLING AT GENOA PORT.
- OCEAN FREIGHT FROM ITALY, EUROPE TO MUMBAI PORT, INDIA.



PROJECT EXECUTIONS

POL : HAMBURG, GERMANY

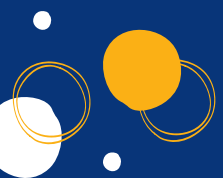
POD : MUMBAI PORT, INDIA

HEAVY LIFT : 2 X 57 MT.

DESCRIPTION : ENGINEERING GOODS AND
ACCESSORIES

SCOPE OF WORK :-

- OCEAN FREIGHT FROM HAMBURG, GERMANY TO MUMBAI PORT, INDIA
- PORT HANDLING AT MUMBAI PORT



PROJECT EXECUTIONS

POL : MUNDRA PORT, INDIA

POD : TINCAN/LAGOS, NIGERIA

HEAVY LIFT : 2 X 87 MT.

DESCRIPTION : POWER TRANSFORMER
MACHINE

SCOPE OF WORK :-

- PICKUP FROM SHIPPER FACTORY & MOVEMENT TO MUNDRA PORT, INDIA
- OCEAN FREIGHT FROM MUNDRA PORT, INDIA TO TINCAN/LAGOS, NIGERIA



PROJECT EXECUTIONS

POL : HAMBURG, GERMANY

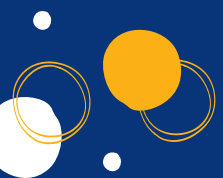
POD : MUMBAI PORT, INDIA

HEAVY LIFT : 1 X 48 MT, 1 X 46.

DESCRIPTION : ENGINEERING GOODS AND
ACCESSORIES

SCOPE OF WORK : -

- OCEAN FREIGHT FROM HAMBURG, GERMANY TO MUMBAI PORT, INDIA
- PORT HANDLING AT MUMBAI PORT



PROJECT EXECUTIONS

POL : ANTWERP, BELGIUM

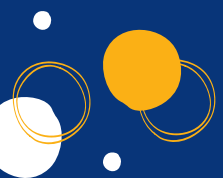
POD : MUMBAI PORT, INDIA

HEAVY LIFT : 2 X 59 MT

DESCRIPTION : ENGINEERING GOODS AND
ACCESSORIES

SCOPE OF WORK : -

- OCEAN FREIGHT FROM ANTWERP, BELGIUM TO MUMBAI PORT, INDIA
- PORT HANDLING AT MUMBAI PORT



PROJECT EXECUTIONS

POL : KOBE, JAPAN

POD : MUMBAI PORT, INDIA

VOLUME : 811 FRT (8 PKGS)

HEAVY LIFT : 3 X 36.84 MT, 1 X 31 MT

DESCRIPTION : ENGINEERING GOODS AND
ACCESSORIES

SCOPE OF WORK : -

- OCEAN FREIGHT FROM KOBE, JAPAN TO MUMBAI PORT, INDIA
- PORT HANDLING AT MUMBAI PORT



PROJECT EXECUTIONS

POL : SHANGHAI, CHINA

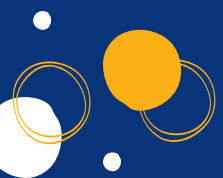
POD : KOLKATA PORT, INDIA

VOLUME : 1,478 FRT (16 PKGS)

DESCRIPTION : ENGINEERING GOODS AND
ACCESSORIES

SCOPE OF WORK : -

- OCEAN FREIGHT FROM SHANGHAI,
CHINA TO KOLKATA PORT, INDIA



PROJECT EXECUTIONS

POL : TIANJIN, CHINA

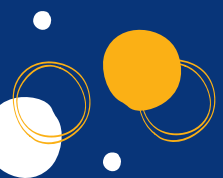
POD : KOLKATA PORT, INDIA

VOLUME : 1,852 (133 PKGS)

DESCRIPTION : ENGINEERING GOODS AND
ACCESSORIES

SCOPE OF WORK : -

- OCEAN FREIGHT FROM TIANJIN, CHINA
TO KOLKATA PORT, INDIA



PROJECT EXECUTIONS

POL : TIANJIN, CHINA

POD : MUMBAI PORT, INDIA

VOLUME : 1,056 FRT (31 PKGS)

DESCRIPTION : ENGINEERING GOODS AND
ACCESSORIES

SCOPE OF WORK :-

- OCEAN FREIGHT FROM TIANJIN, CHINA TO MUMBAI PORT, INDIA
- PORT HANDLING AT MUMBAI PORT



PROJECT EXECUTIONS

POL : HAMBURG, GERMANY

POD : NHAVA SHEVA, INDIA

HEAVY LIFT : 1 X 41 MT.

DESCRIPTION : ENGINEERING GOODS AND
ACCESSORIES

SCOPE OF WORK : -

- UNDERHOOK DELIVERY AND
TRANSPORTATION TO CHENNAI



PROJECT EXECUTIONS

POL : MASAN, KOREA

POD : MUMBAI PORT, INDIA

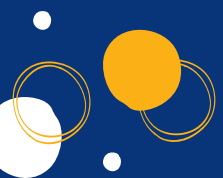
VOLUME : 121 FRT

HEAVY LIFT : 2 X 60 MT

DESCRIPTION : ENGINEERING GOODS AND
ACCESSORIES

SCOPE OF WORK : -

- OCEAN FREIGHT FROM MASAN, KOREA TO MUMBAI PORT, INDIA
- PORT HANDLING AT MUMBAI PORT



PROJECT EXECUTIONS

POL : MASAN, KOREA

POD : MUMBAI PORT, INDIA

VOLUME : 480 FRT (14 PKGS)

HEAVY LIFT : 2 X 37.2 MT, 1 X 50.2 MT

DESCRIPTION : ENGINEERING GOODS AND
ACCESSORIES

SCOPE OF WORK : -

- OCEAN FREIGHT FROM MASAN, KOREA TO MUMBAI PORT, INDIA
- PORT HANDLING AT MUMBAI PORT



PROJECT EXECUTIONS

POL : SHANGHAI, CHINA
POD : MUMBAI PORT, INDIA
VOLUME : 2,842 FRT (53 PKGS)
HEAVY LIFT : 1 X 38 MT, 2 X 31 MT
DESCRIPTION : MACHINERY WITH
ACCESSORIES

SCOPE OF WORK : -

- OCEAN FREIGHT FROM SHANGHAI, CHINA TO MUMBAI PORT, INDIA
- PORT HANDLING AT MUMBAI PORT



PROJECT EXECUTIONS

POL : ENNORE PORT, INDIA

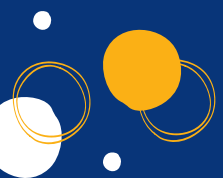
POD : BALTIMORE, USA

VOLUME : 278 FRT

DESCRIPTION : 13 GEARBOXES , GEAR RATIO

SCOPE OF WORK : -

- OCEAN FREIGHT FROM ENNORE PORT, INDIA TO BALTIMORE, USA



PROJECT EXECUTIONS

POL : ENNORE PORT, INDIA

POD : FREEPORT, TEXAS, USA

VOLUME : 198 FRT

DESCRIPTION : 9 GEARBOXES , GEAR RATIO

SCOPE OF WORK : -

- PICKUP FROM SHIPPER FACTORY & MOVEMENT TO FREEPORT, TEXAS, USA
- EXPORT CUSTOM CLEARANCE, LASHING, AND PORT HANDLING AT ENNORE PORT
- OCEAN FREIGHT FROM ENNORE PORT, INDIA TO FREEPORT, TEXAS, USA



PROJECT EXECUTIONS

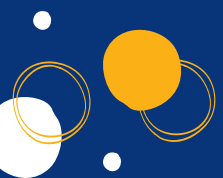
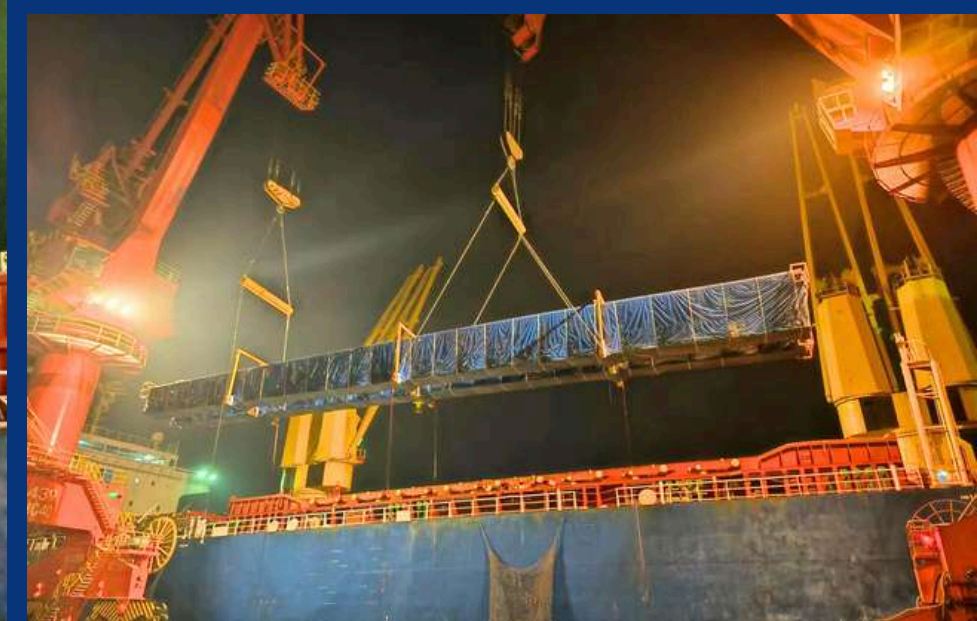
POL : SHANGHAI, CHINA

POD : KANDLA, INDIA

VOLUME : 5465 FRT

DIMENSIONS : 36.7 X 5.7 X 3.1 (METER),
36.7X 5.7 X 3.72 (METER),
36.6 X 4.0 X 4.3 (METER),
36.6 X 5.7 X 3.8 (METER)

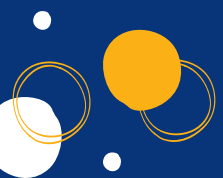
DESCRIPTION : MOULD WITH STANDARD
ACCESSORIES & PARTS OF
WIND OPERATED ELECTRICITY
GENERATOR



PROJECT EXECUTIONS

SCOPE OF WORK :-

- PICKUP FROM SHIPPER FACTORY & MOVEMENT TO SHANGHAI PORT
- CUSTOM CLEARANCE & PORT HANDLING AT SHANGHAI PORT
- OCEAN FREIGHT FROM SHANGHAI, CHINA TO KANDLA, INDIA

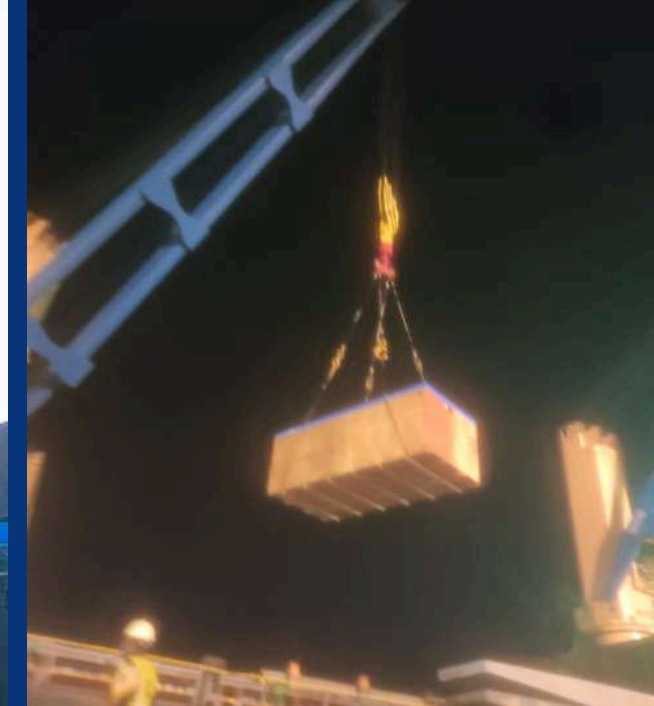


PROJECT EXECUTIONS

POL : YOKOHAMA, JAPAN
POD : KANDLA PORT, INDIA
VOLUME : 316 FRT (5 PKGS)
HEAVY LIFT : 1 X 160 MT
DESCRIPTION : MACHINERY WITH
ACCESSORIES

SCOPE OF WORK : -

- OCEAN FREIGHT FROM YOKOHAMA, JAPAN TO KANDLA PORT, INDIA
- TRANSPORTATION FROM PORT TO CONSIGNEE FACTORY



PROJECT EXECUTIONS

POL : SHANGHAI, CHINA

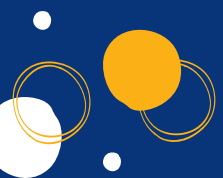
POD : MUMBAI PORT, INDIA

HEAVY LIFT : 2 X 59 MT

DESCRIPTION : WORK ROLLS

SCOPE OF WORK : -

- PICKUP FROM CONSIGNEE FACTORY
- OCEAN FREIGHT FROM SHANGHAI, CHINA TO MUMBAI PORT, INDIA
- INTER-CARTING AT MUMBAI PORT



PROJECT EXECUTIONS

POL : SHANGHAI, CHINA

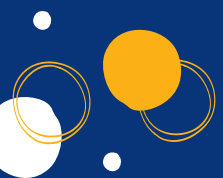
POD : MUMBAI PORT, INDIA

VOLUME : 588 FRT (21 PKGS)

DESCRIPTION : ENGINEERING GOODS AND
SPARE PARTS

SCOPE OF WORK : -

- OCEAN FREIGHT FROM SHANGHAI, CHINA TO MUMBAI PORT, INDIA
- INTER-CARTING AT MUMBAI PORT



PROJECT EXECUTIONS

POL : SHANGHAI, CHINA

POD : KANDLA, INDIA

VOLUME : 3082 FRT

DIMENSIONS : 38.8 X 4 X 3.8 (METER),
36.7 X 5.7 X 3.1 (METER),
36.6 X 4 X 4.3 (METER),
35.7 X 5.7 X 3.7 (METER)

DESCRIPTION : MOULD WITH STANDARD
ACCESSORIES & PARTS OF
WIND OPERATED ELECTRICITY
GENERATOR



PROJECT EXECUTIONS

SCOPE OF WORK :-

- PICKUP FROM SHIPPER FACTORY & MOVEMENT TO SHANGHAI PORT
- CUSTOM CLEARANCE & PORT HANDLING AT SHANGHAI PORT
- OCEAN FREIGHT FROM SHANGHAI, CHINA TO KANDLA, INDIA



PROJECT EXECUTIONS

POL : HAMBURG, GERMANY

POD : HAZIRA PORT, INDIA

VOLUME : 1806 FRT

HEAVY LIFT : 4 X 97 MT, 4 PKGS

DIMENSIONS : 14.13 X 5.5 X 5.8 M EACH

DESCRIPTION : SUPPLY OF 4 SLAG POT
CARRIER AND ACCESSORIES

SCOPE OF WORK : -

- OCEAN FREIGHT FROM HAMBURG, GERMANY TO HAZIRA PORT, INDIA

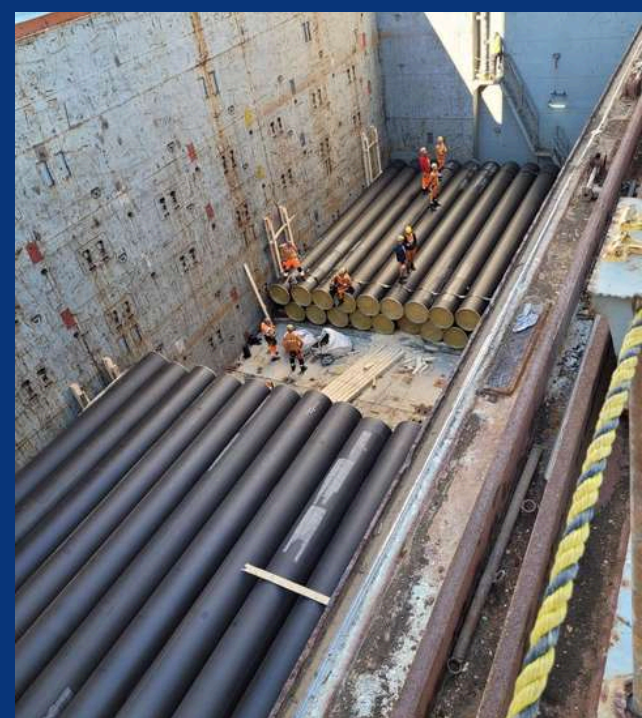


PROJECT EXECUTIONS

POL : ANTWERP, BELGIUM
POD : DAMMAM, SAUDI ARABIA
VOLUME: : 4,300 FRT, 395 WELDED
PIPES MOVED IN 2 LOTS.

SCOPE OF WORK : -

- OCEAN FREIGHT FROM ANTWERP, BELGIUM TO DAMMAM, SAUDI ARABIA
- CUSTOMS CLEARANCE & PORT HANDLING AT DAMMAM PORT
- DOOR DELIVERY FOR DIFFERENT RESPECTIVE LOCATIONS AS PER CUSTOMER REQUIREMENT

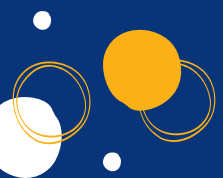
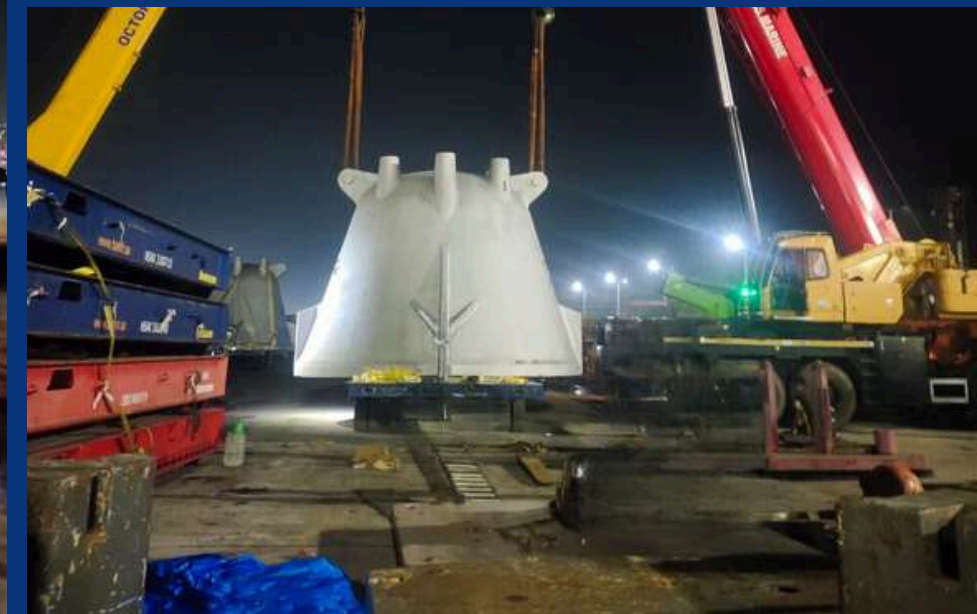


PROJECT EXECUTIONS

POL : SHANGHAI, CHINA
POD : ENNORE PORT, INDIA
VOLUME : 454 FRT
HEAVY LIFT : 3 X 67.500 MT
DESCRIPTION : SLAG POT

SCOPE OF WORK : -

- IMPORT CUSTOM CLEARANCE AND PORT HANDLING AT ENNORE PORT

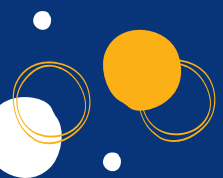


PROJECT EXECUTIONS

POL : YOKOHAMA, JAPAN
POD : KANDLA & MUMBAI, INDIA
VOLUME : 432 FRT
HEAVY LIFT : 1 X 40 MT, 1 X 160 MT
DESCRIPTION : WET GAS COMPRESSOR
WITH ACCESSORIES

SCOPE OF WORK : -

- OCEAN FREIGHT FROM YOKOHAMA, JAPAN TO KANDLA & MUMBAI, INDIA
- TRANSPORTATION FROM KANDLA PORT TO CONSIGNEE FACTORY



PROJECT EXECUTIONS

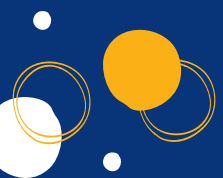
POL : SHANGHAI, CHINA

POD : KANDLA, INDIA

VOLUME : 2306 FRT

DIMENSIONS : 36.8 X 5.7 X 2.9 (METER),
36.1 X 3.7 X 4 (METER),
36.7 X 5.7 X 3.1 (METER),
36.1 X 3.7 X 3.1 (METER)

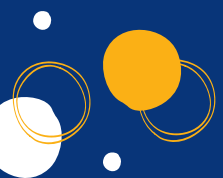
DESCRIPTION : SB70 MAIN MOULD (X&O SIDE)
WITH ACCESSORIES



PROJECT EXECUTIONS

SCOPE OF WORK :-

- PICKUP FROM SHIPPER FACTORY & MOVEMENT TO SHANGHAI PORT
- CUSTOM CLEARANCE & PORT HANDLING AT SHANGHAI PORT
- OCEAN FREIGHT FROM SHANGHAI, CHINA TO KANDLA, INDIA



PROJECT EXECUTIONS

POL : CIVITAVECCHIA, ITALY

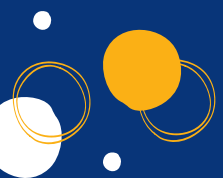
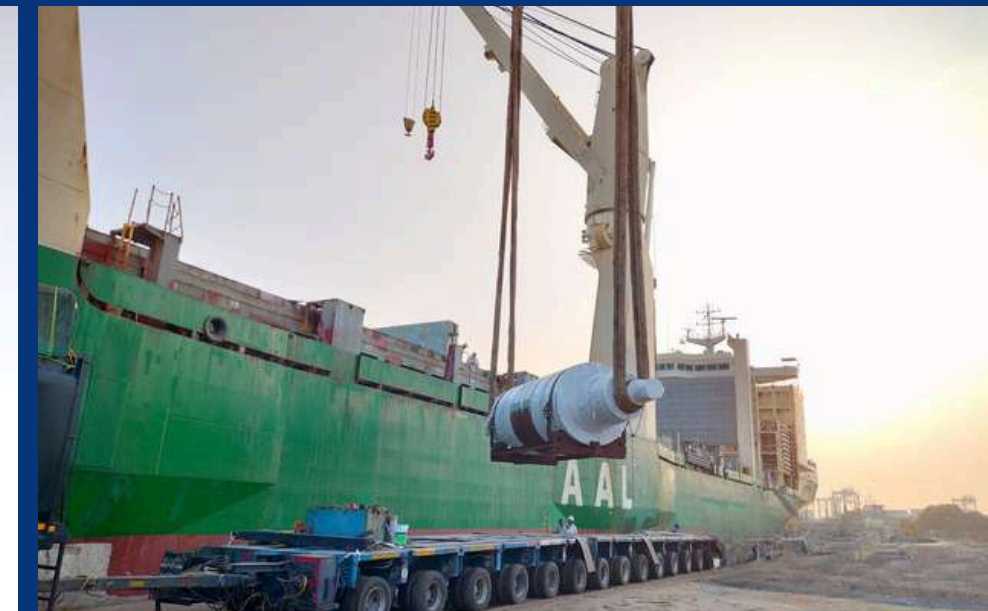
POD : CHENNAI, INDIA

HEAVY LIFT : 1 X 203 MT

DESCRIPTION : BACK UP ROLL

SCOPE OF WORK : -

- IMPORT CUSTOM CLEARANCE AT CHENNAI PORT.



PROJECT EXECUTIONS

POL : BALTIMORE, UNITED STATES

POD : MUMBAI PORT, INDIA

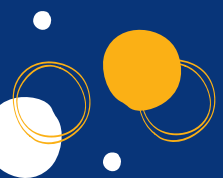
HEAVY LIFT : 1 X 42 MT

DIMENSIONS : 5.27 X 1.17 X 1.17 METER

DESCRIPTION : PROPEL CAMSHAFT

SCOPE OF WORK :-

- OCEAN FREIGHT FROM BALTIMORE, UNITED STATES TO MUMBAI PORT, INDIA



PROJECT EXECUTIONS

POL : MUMBAI, INDIA

POD : BAHRAIN

HEAVY LIFT : 1 X 31.33 MT

DESCRIPTION : SELF-PROPELLED TRACK
MOUNTED

SCOPE OF WORK :-

- TRANSPORTATION FROM THE SHIPPER'S FACTORY TO THE MUMBAI PORT
- OCEAN FREIGHT FROM MUMBAI, INDIA TO BAHRAIN



PROJECT EXECUTIONS

POL : SHANGHAI, CHINA
POD : VISAKHAPATNAM, INDIA
VOLUME: : 45 PKGS / 2720 FRT
HEAVY LIFT : 2 X 68.5 MTS WITH 4 PKGS
ABOVE 80 FT IN LENGTH.

DESCRIPTION : VACUUM TANK AND
ACCESSORIES FOR OXYGEN PLANT

SCOPE OF WORK : -

- OCEAN FREIGHT FROM SHANGHAI,
CHINA TO VISAKHAPATNAM, INDIA



PROJECT EXECUTIONS

POL : KOBE, JAPAN

POD : MUMBAI PORT, INDIA

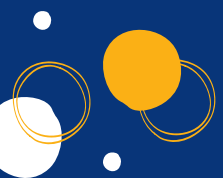
VOLUME: : 947 FRT | 48 PKGS

HEAVY LIFT : 2 X 36 MT, 1 X 30 MT, 2 X 26 MT

DESCRIPTION : PICKLING LINE & TANDEM
COLD ROLLING MILL

SCOPE OF WORK : -

- OCEAN FREIGHT FROM KOBE, JAPAN TO MUMBAI PORT, INDIA
- INTER-CARTING AT MUMBAI PORT



PROJECT EXECUTIONS

POL : SHANGHAI, CHINA

POD : MUMBAI PORT, INDIA

VOLUME: : 1250 FRT

HEAVY LIFT : 4 X 76.5 MT, 1 X 45 MT

DESCRIPTION : INJECTION MOULDING &
ROLLER WHEEL MACHINE

SCOPE OF WORK : -

- OCEAN FREIGHT FROM SHANGHAI, CHINA TO MUMBAI PORT, INDIA



PROJECT EXECUTIONS

POL : MUMBAI, INDIA

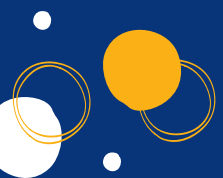
POD : MAPUTO, MOZAMBIQUE

DIMENSION : 5.6 X 5.46 X 1.03 METER

DESCRIPTION : ADAPTER

SCOPE OF WORK :-

- EXPORT CUSTOM CLEARANCE AND PORT HANDLING AT MUMBAI PORT.
- OCEAN FREIGHT FROM MUMBAI PORT, INDIA TO MAPUTO, MOZAMBIQUE



PROJECT EXECUTIONS

POL : SHANGHAI, CHINA

POD : MUMBAI PORT, INDIA

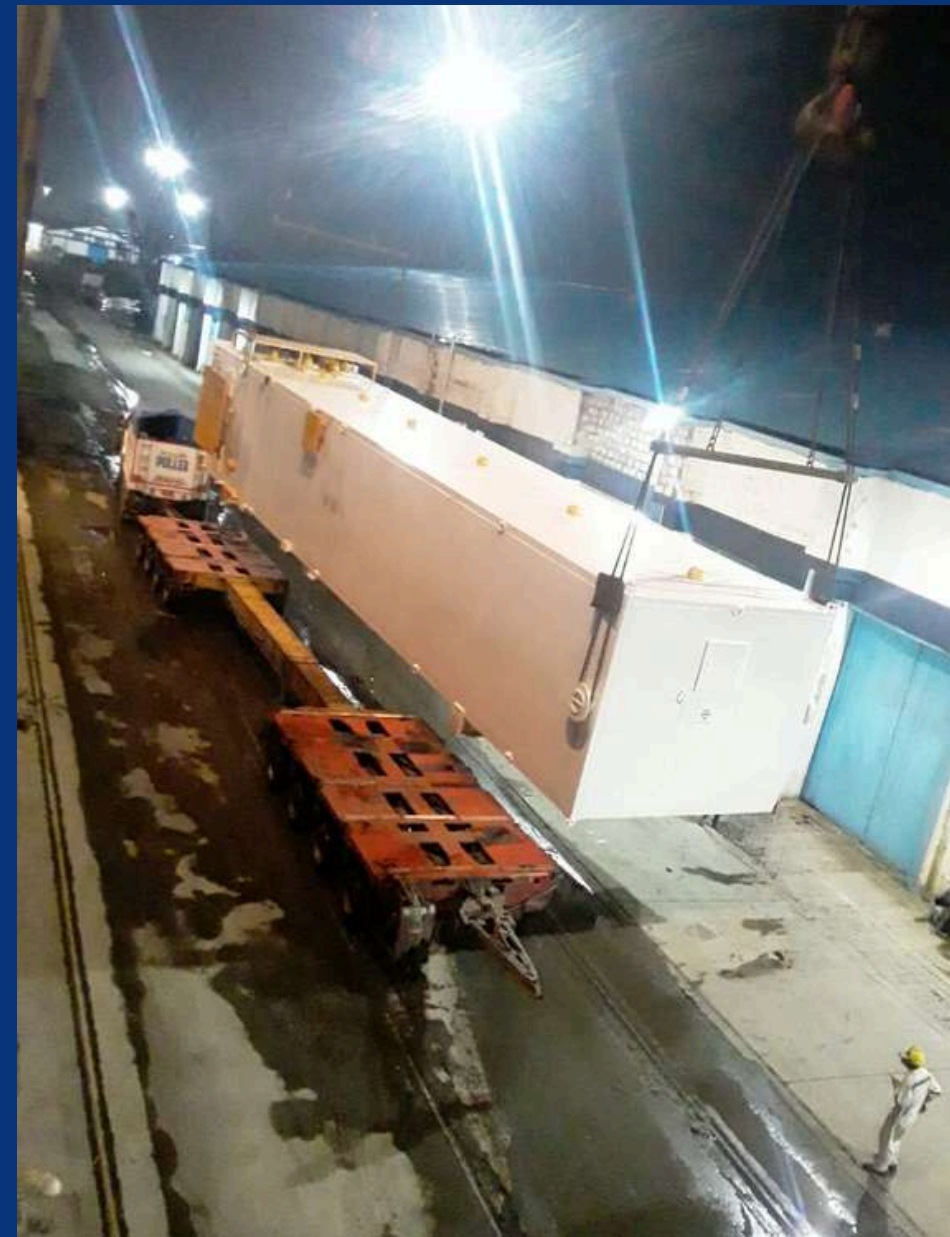
HEAVY LIFT : 1 X 80 MT

DIMENSIONS : 21.39 X 5.07 X 4.57 METER

DESCRIPTION : COLD STORAGE BOX

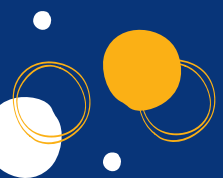
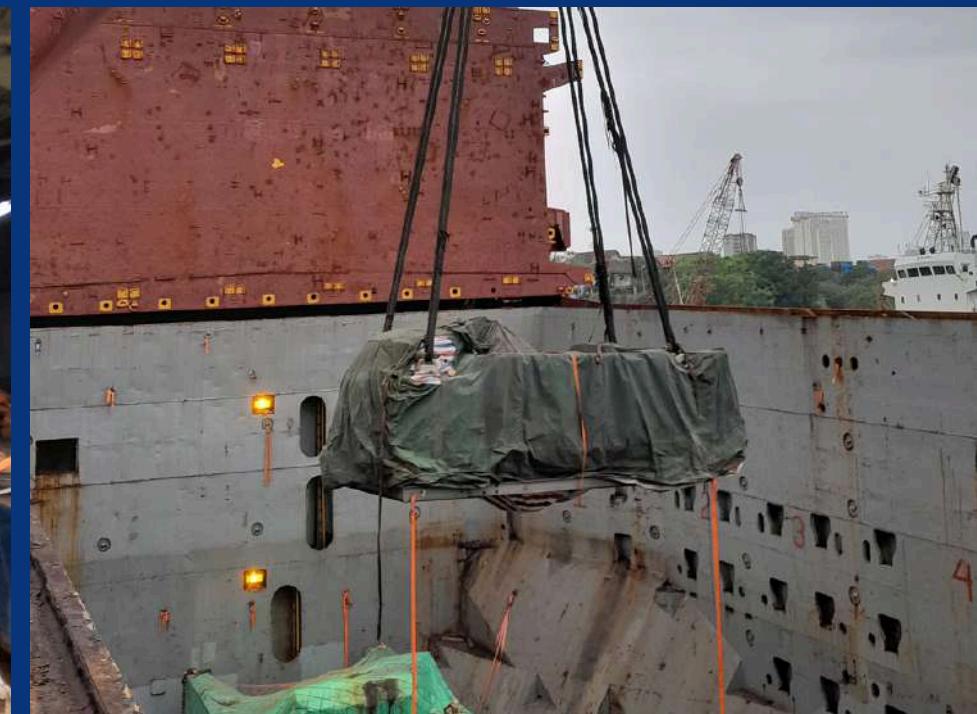
SCOPE OF WORK : -

- OCEAN FREIGHT FROM SHANGHAI, CHINA TO MUMBAI PORT, INDIA



PROJECT EXECUTIONS

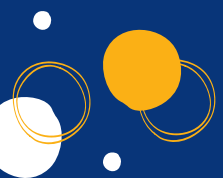
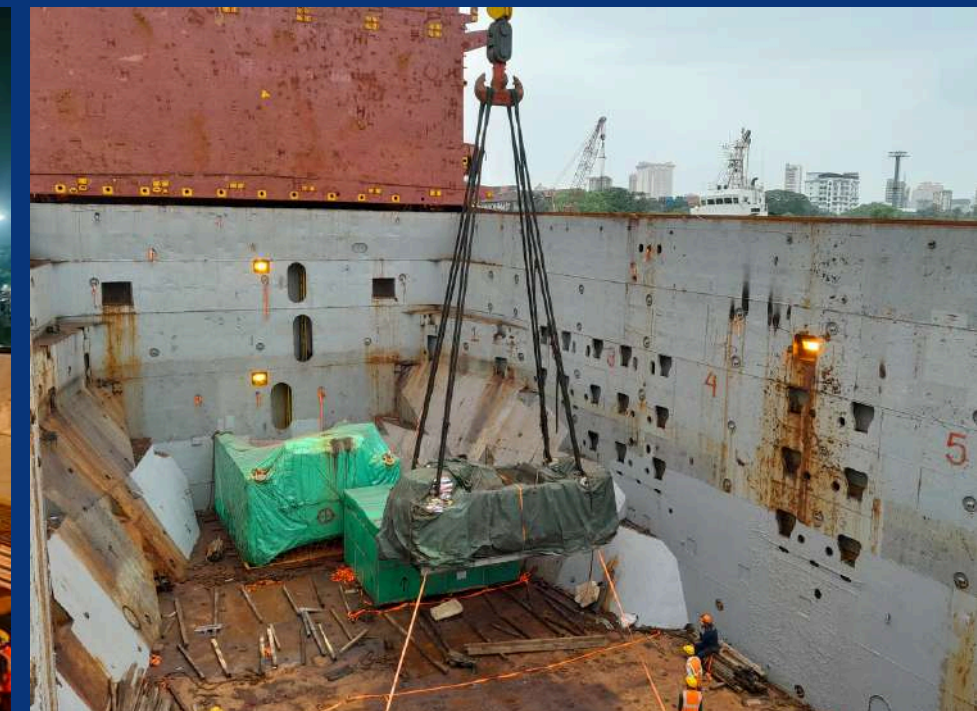
POL : SHANGHAI, CHINA
POD : MUMBAI PORT, INDIA
VOLUME: : 370 FRT
HEAVY LIFT : 1 X 114 MT, 2 X 33 MT, 3 PKGS
DESCRIPTION : HYDRAULIC PRESS &
BALL MILL & ACCESSORIES.



PROJECT EXECUTIONS

SCOPE OF WORK :-

- PICKUP FROM SHIPPER FACTORY & MOVEMENT TO SHANGHAI PORT
- CUSTOM CLEARANCE & PORT HANDLING AT SHANGHAI PORT
- OCEAN FREIGHT FROM SHANGHAI, CHINA TO MUMBAI PORT, INDIA
- IMPORT CUSTOM CLEARANCE & TRANSPORTATION FROM MUMBAI PORT TO CONSIGNEE FACTORY.



PROJECT EXECUTIONS

POL : SHANGHAI, CHINA

POD : MUMBAI PORT, INDIA

HEAVY LIFT : 1 X 84 MT

DESCRIPTION : SPARES FOR HOT ROLLED
MILL-1 SET CONSISTING
OF SLEDGE.

SCOPE OF WORK : -

- PICKUP FROM THE SHIPPER FACTORY
- OCEAN FREIGHT FROM SHANGHAI, CHINA TO MUMBAI PORT, INDIA
- INTER-CARTING AT MUMBAI PORT



PROJECT EXECUTIONS

POL : SHANGHAI, CHINA
POD : MUMBAI PORT, INDIA
VOLUME: : 318 CBM
HEAVY LIFT : 9 X 38 MT, TOTAL 18 PKGS
DESCRIPTION : PARTS OF WIND OPERATED
ELECTRICITY GENERATOR
GEARBOX

SCOPE OF WORK : -

- OCEAN FREIGHT FROM SHANGHAI, CHINA TO MUMBAI PORT, INDIA



PROJECT EXECUTIONS

POL : YOKOHAMA, JAPAN

POD : CHENNAI PORT, INDIA

VOLUME: : 436 CBM

HEAVY LIFT : 1 X 72, 1 X 54, 1 X 32, 1 X 30 MT
18 PKGS

DESCRIPTION : ENGINEERING EQUIPMENTS

SCOPE OF WORK : -

- IMPORT CUSTOM CLEARANCE AND PORT HANDLING AT CHENNAI PORT.



PROJECT EXECUTIONS

POL : MUMBAI, INDIA

POD : ABU DHABI, UAE

VOLUME : 187 FRT

DIMENSION : 19 X 3.18 X 2 METER

DESCRIPTION : CRANE & ACCESSORIES

SCOPE OF WORK : -

- TRANSPORTATION FROM FACTORY TO MUMBAI PORT.
- EXPORT CUSTOM CLEARANCE AND PORT HANDLING AT MUMBAI PORT.
- OCEAN FREIGHT FROM MUMBAI PORT, INDIA TO ABU DHABI, UAE

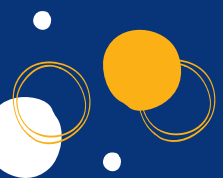


PROJECT EXECUTIONS

POL : SHANGHAI, CHINA
POD : VISAKHAPATNAM, INDIA
VOLUME: : 254 FRT
HEAVY LIFT : 4 X 63.5 MT PKGS
DESCRIPTION : FINISHING MILL WORK
ROLLS

SCOPE OF WORK : -

- OCEAN FREIGHT FROM SHANGHAI, CHINA TO VISAKHAPATNAM, INDIA



PROJECT EXECUTIONS

POL : KOBE, JAPAN

POD : MUMBAI PORT, INDIA

VOLUME: : 514 FRT

HEAVY LIFT : 2 X 122 MT, 2 X 119 MT PKGS

DESCRIPTION : PICKLING LINE & TANDEM
COLD ROLLING MILL

SCOPE OF WORK : -

- OCEAN FREIGHT FROM KOBE, JAPAN TO MUMBAI PORT, INDIA
- INTER-CARTING AT MUMBAI PORT



PROJECT EXECUTIONS

POL : NHAVA SHEVA

HEAVY LIFT : 1 X 38 MT PACKAGE +
1 X 40' FR OOG

DESCRIPTION : LUBE OIL CONSOLE

SCOPE OF WORK : -

- EXPORT CUSTOM CLEARANCE & PORT HANDLING FOR 1 X 38 MT CARGO AT NHAVA SHEVA FOR LOADING AS BBK ON CONTR VESSEL.
- CUSTOM CLEARANCE & CFS STUFFING FOR 40' FR CONTR.

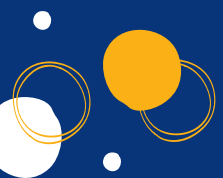


PROJECT EXECUTIONS

POL : ANTWERP, BELGIUM
POD : MUMBAI PORT, INDIA
HEAVY LIFT : 1 X 58, 1 X 50 MT PKG
DESCRIPTION : SECOND-HAND MACHINERY

SCOPE OF WORK : -

- IMPORT CUSTOM CLEARANCE & TRANSPORTATION FROM MUMBAI PORT TO CONSIGNEE FACTORY PUNE



PROJECT EXECUTIONS

POL : MUMBAI PORT, INDIA

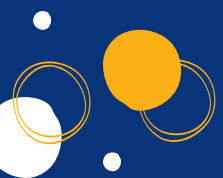
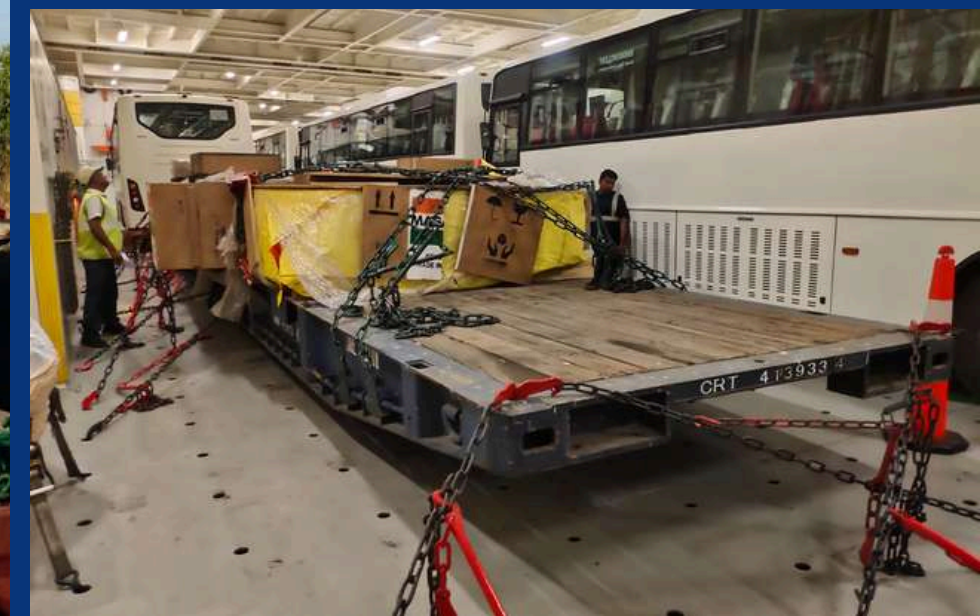
POD : JEBEL ALI, UAE

HEAVY LIFT : 2 X 65 MT PKG

DESCRIPTION : MILL HOUSING

SCOPE OF WORK : -

- PORT HANDLING AT MUMBAI PORT
- OCEAN FREIGHT FROM MUMBAI PORT, INDIA TO JEBEL ALI, UAE



PROJECT EXECUTIONS

POL : YOKOHAMA, JAPAN

POD : CHENNAI PORT, INDIA

HEAVY LIFT : 2 X 44 MT PKG

DESCRIPTION : FORGED BACK-UP ROLLS

SCOPE OF WORK : -

- OCEAN FREIGHT FROM YOKOHAMA, JAPAN TO CHENNAI PORT, INDIA
- IMPORT CUSTOM CLEARANCE

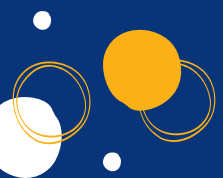


PROJECT EXECUTIONS

POL : SHANGHAI, CHINA
POD : CHENNAI PORT, INDIA
VOLUME : 243 FRT
HEAVY LIFT : 1 X 76 MT + ACCESSORIES
DESCRIPTION : PRESS MACHINERY

SCOPE OF WORK :-

- OCEAN FREIGHT FROM SHANGHAI, CHINA TO CHENNAI PORT, INDIA
- TRANSPORTATION FROM CHENNAI PORT TO CONSIGNEE FACTORY



PROJECT EXECUTIONS

POL : MUMBAI PORT, INDIA

POD : SHUAIBA, KUWAIT

HEAVY LIFT : 47 PKG | TOTAL 135 MT

DESCRIPTION : CARBON STEEL TUBES

SCOPE OF WORK : -

- OCEAN FREIGHT FROM MUMBAI PORT, INDIA TO SHUAIBA, KUWAIT.



PROJECT EXECUTIONS

POL : NHAVA SHEVA

POD : KRIBI PORT, CAMEROON

HEAVY LIFT : 41 MT

DESCRIPTION : PHYSICAL REFINERY

SCOPE OF WORK : -

- OCEAN FREIGHT FROM NHAVA SHEVA PORT INDIA, TO KRIBI PORT, CAMEROON



PROJECT EXECUTIONS

POL : PORT OF MASAN (KOREA)

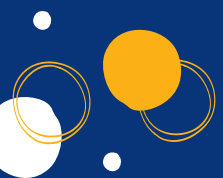
POD : CHENNAI, INDIA

HEAVY LIFT : 4 X 63 MT

DESCRIPTION : 4 PIECES ROLLS FOR PLATE
MILL

SCOPE OF WORK : -

- OCEAN FREIGHT FROM PORT OF MASAN (KOREA) TO CHENNAI, INDIA.
- IMPORT CUSTOM CLEARANCE



PROJECT EXECUTIONS

POL : MUMBAI PORT, INDIA

POD : MOMBASA, KENYA

HEAVY LIFT : 55 MT

DESCRIPTION : SELF PROPELLED, TRACK
MOUNTED

SCOPE OF WORK : -

- TRANSPORTATION FROM CHENNAI TO MUMBAI PORT.
- EXPORT CUSTOM CLEARANCE AND PORT HANDLING AT MUMBAI PORT.
- OCEAN FREIGHT FROM MUMBAI PORT, INDIA TO MOMBASA, KENYA.



PROJECT EXECUTIONS

POL : MUMBAI PORT, INDIA

POD : MOMBASA, KENYA

VOLUME : 500 CBM

HEAVY LIFT : 2 X 85 MT

DESCRIPTION : DRYER

SCOPE OF WORK : -

- OCEAN FREIGHT FROM MUMBAI PORT, INDIA TO MOMBASA, KENYA.
- EXPORT CUSTOM CLEARANCE AND PORT HANDLING AT MUMBAI PORT.



PROJECT EXECUTIONS

POL : MUMBAI PORT, INDIA

POD : JEBEL ALI, UAE

HEAVY LIFT : 1 X 51 MT

DESCRIPTION : TRANSFORMER

SCOPE OF WORK : -

- OCEAN FREIGHT FROM MUMBAI PORT, INDIA TO JEBEL ALI, UAE.



PROJECT EXECUTIONS

POL : MUMBAI PORT, INDIA

POD : JEBEL ALI, UAE

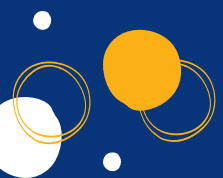
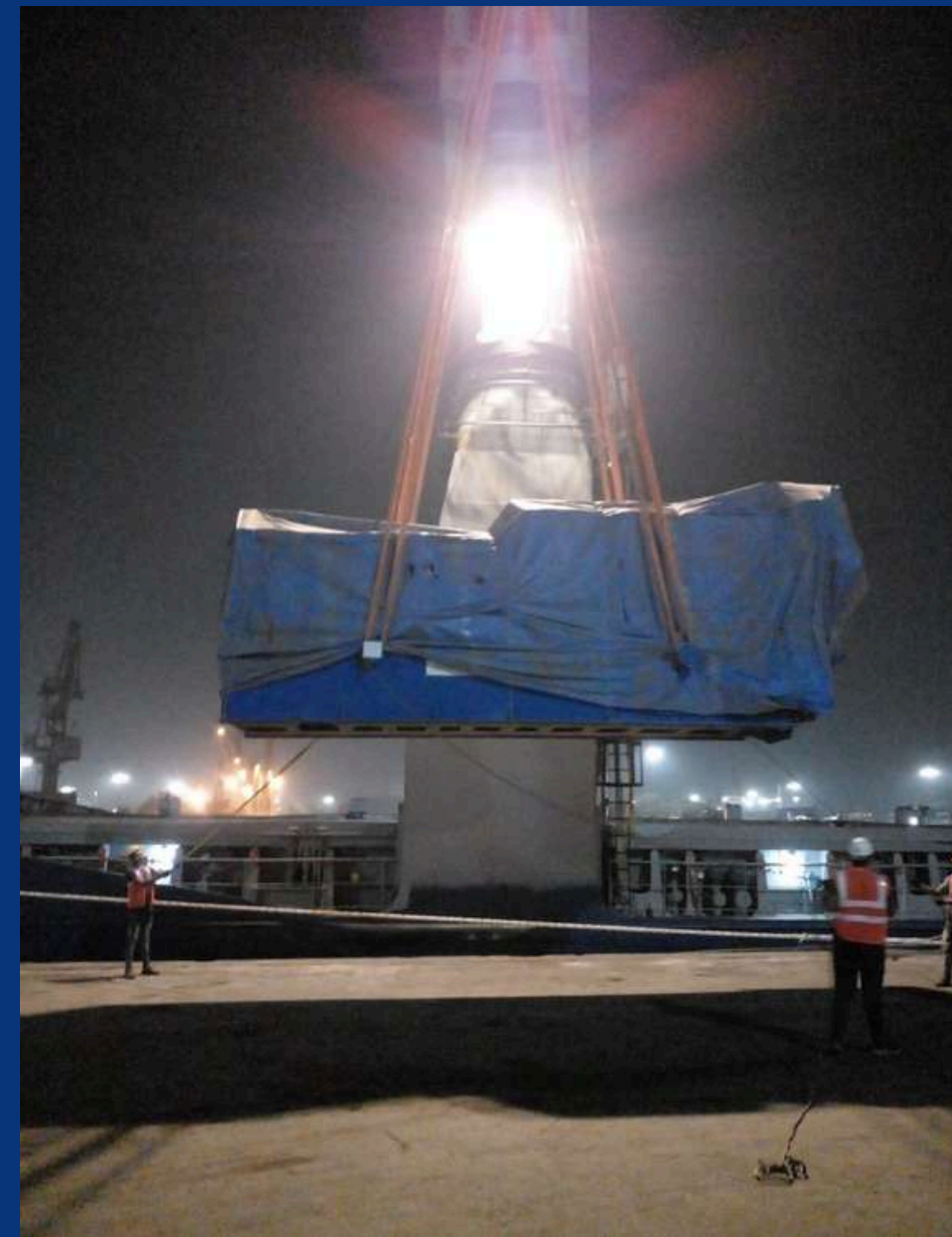
VOLUME : 433 FRT

HEAVY LIFT : 5 X 51 MT

DESCRIPTION : GENSET

SCOPE OF WORK : -

- OCEAN FREIGHT FROM MUMBAI PORT, INDIA TO JEBEL ALI, UAE.



PROJECT EXECUTIONS

POL : ENNORE (CHENNAI), INDIA

POD : JEBEL ALI, UAE

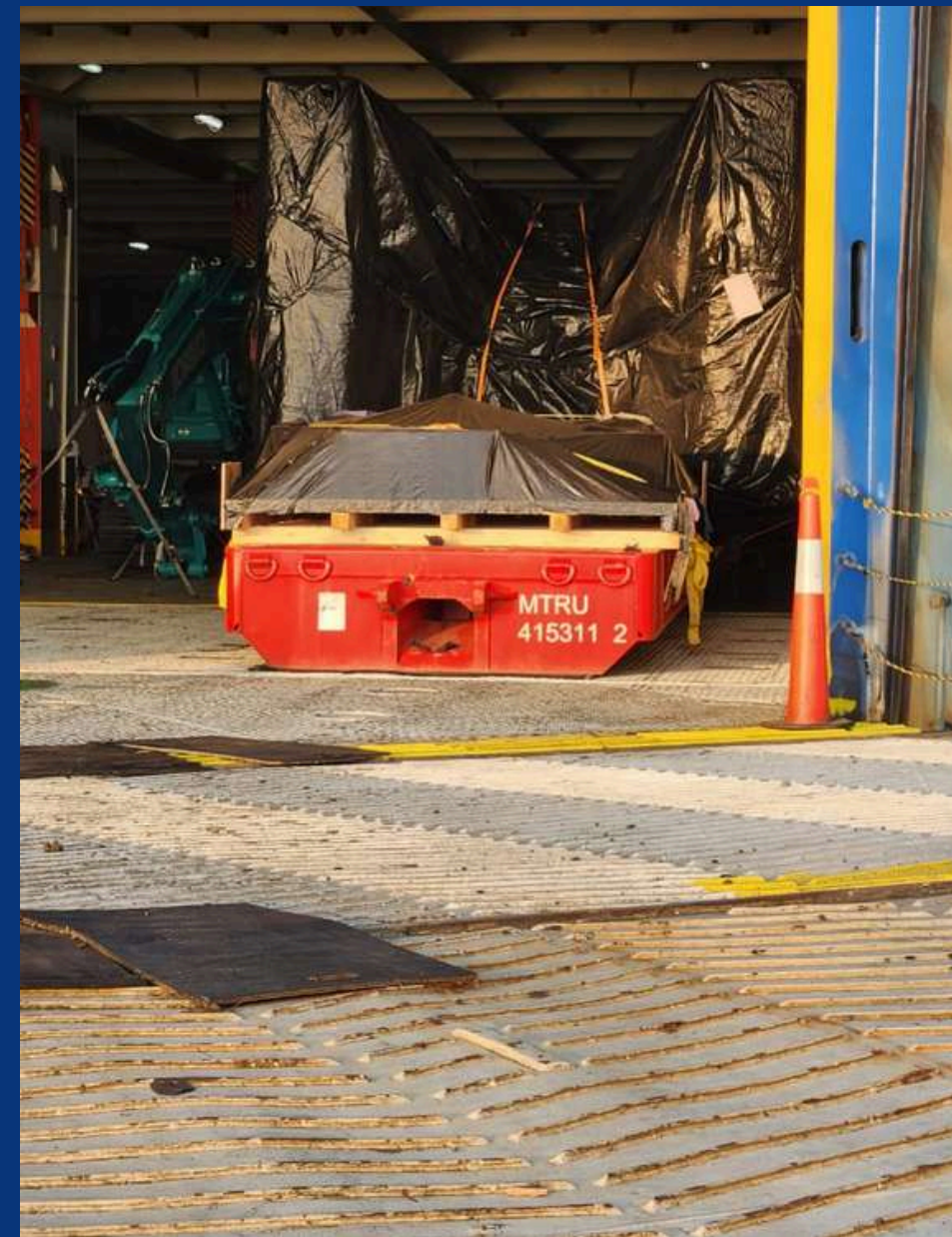
VOLUME : 170 CBM

HEAVY LIFT : 1 X 62 MT, 4 X 30 MT PKG

DESCRIPTION : MECHANICAL PARTS FOR
ROLLING MILL

SCOPE OF WORK : -

- OCEAN FREIGHT FROM ENNORE (CHENNAI), INDIA TO JEBEL ALI, UAE.
- PORT HANDLING - LOADING & LASHING OF PACKAGES ON MAFI ROLL TRAILER.



PROJECT EXECUTIONS

POL : MUMBAI PORT, INDIA

POD : SHUAIBA, KUWAIT

VOLUME : 638 CBM

HEAVY LIFT : 4 X 49 MT

DESCRIPTION : BOILER

SCOPE OF WORK : -

- OCEAN FREIGHT FROM MUMBAI PORT, INDIA TO SHUAIBA, KUWAIT.

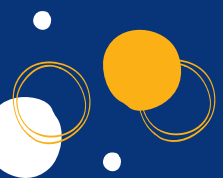
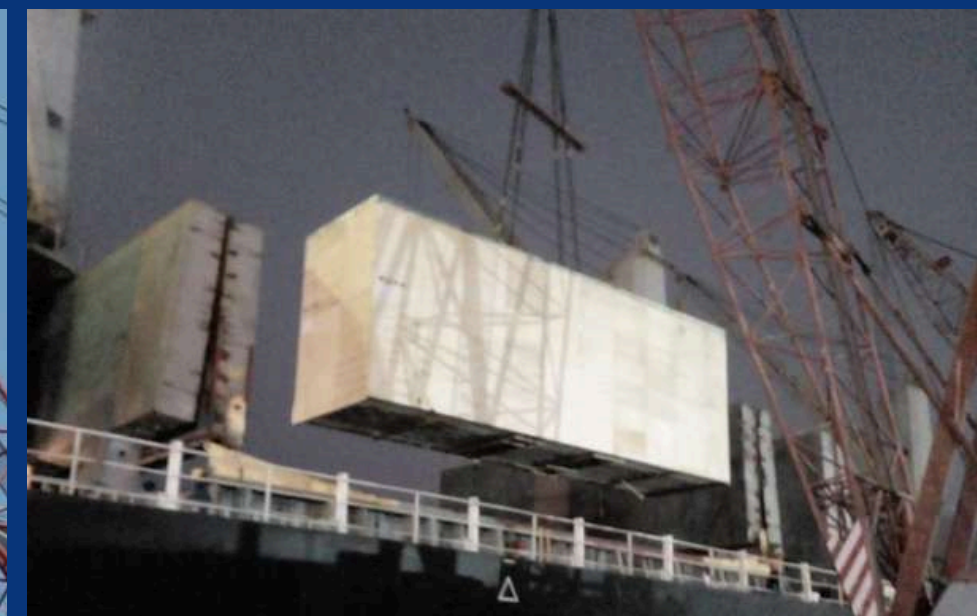


PROJECT EXECUTIONS

POL : TIANJIN, CHINA
POD : MUMBAI PORT, INDIA
VOLUME : 298 FRT
HEAVY LIFT : 1 X 39 MT & 1 X 32 MT PKG.
DESCRIPTION : VALVE GOGGLE

SCOPE OF WORK : -

- OCEAN FREIGHT FROM TIANJIN, CHINA TO MUMBAI PORT, INDIA .
- INTER-CARTING AT MUMBAI PORT.

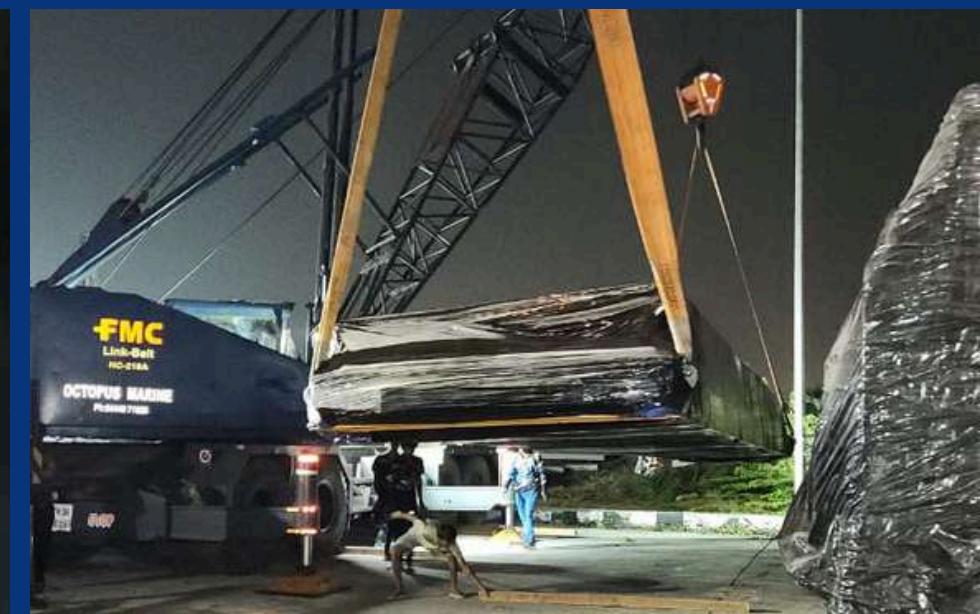


PROJECT EXECUTIONS

POL : ENNORE (CHENNAI), INDIA
POD : SINGAPORE
VOLUME : 90 FRT
HEAVY LIFT : 1 X 22 MT, 1 X 33 MT & 1 X 30
MT TOTAL 9 PKG.

SCOPE OF WORK :-

- TRANSPORTATION FROM KUTHAMBAKKAM TO ENNORE PORT.
- EXPORT CUSTOM CLEARANCE AND PORT HANDLING AT ENNORE (CHENNAI), INDIA.
- OCEAN FREIGHT FROM ENNORE (CHENNAI), INDIA TO SINGAPORE.



PROJECT EXECUTIONS

POL : GEORGIA, EUROPE

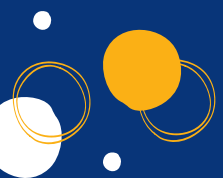
POD : MUMBAI PORT, INDIA

HEAVY LIFT : 65.772 MT

DESCRIPTION : USED DIE-COLD FORMER
MACHINE WITH STANDARD ACCESSORIES

SCOPE OF WORK : -

- IMPORT CUSTOM CLEARANCE AND PORT HANDLING AT MUMBAI PORT.



PROJECT EXECUTIONS

POL : SHANGHAI, CHINA
POD : MUMBAI PORT, INDIA
VOLUME : 329 CBM
HEAVY LIFT : 1 X 107 MT
DESCRIPTION : DRYER WITH MIXER AND
ACCESSORIES

SCOPE OF WORK : -

- OCEAN FREIGHT FROM SHANGHAI, CHINA TO MUMBAI PORT, INDIA .
- IMPORT CUSTOM CLEARANCE AND PORT HANDLING AT MUMBAI PORT.



PROJECT EXECUTIONS

POL : DALIAN, CHINA

POD : MUMBAI PORT, INDIA

VOLUME : 212 FRT.

DESCRIPTION : GEAR BOXES, 6 X 38 TONS +
ACCESSORIES

SCOPE OF WORK : -

- PICKUP FROM DALIAN TO SHANGHAI SHIPPER FACTORY AND EXWORK ACTIVITIES.
- OCEAN FREIGHT FROM SHANGHAI, CHINA TO MUMBAI, INDIA.



PROJECT EXECUTIONS

POL : KOBE PORT, JAPAN

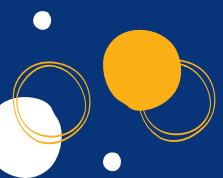
POD : ENNORE PORT, INDIA

HEAVY LIFT : 2 X 63 MT

DESCRIPTION : ROLLS

SCOPE OF WORK : -

- OCEAN FREIGHT FROM KOBE PORT, JAPAN TO ENNORE PORT, INDIA.
- PORT HANDLING AT ENNORE PORT.



PROJECT EXECUTIONS

POL : KANDLA PORT, INDIA

POD : HOUSTON, USA

VOLUME : 608 CBM.

DESCRIPTION : NOSE CONES, TOTAL
NUMBER OF PACKAGES 14

SCOPE OF WORK : -

- OCEAN FREIGHT FROM KANDLA PORT, INDIA TO HOUSTON, USA.
- EXPORT CUSTOM CLEARANCE AND PORT HANDLING AT KANDLA PORT.



PROJECT EXECUTIONS

POL : SHANGHAI, CHINA

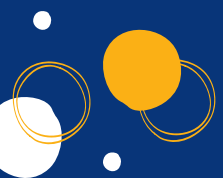
POD : MUMBAI PORT, INDIA

VOLUME : 455 CBM.

DESCRIPTION : BLAST FURNACE
EQUIPMENT

SCOPE OF WORK : -

- OCEAN FREIGHT FROM SHANGHAI, CHINA TO MUMBAI PORT, INDIA
- PORT HANDLING AT MUMBAI PORT.



PROJECT EXECUTIONS

POL : TIANJIN PORT, CHINA

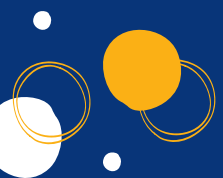
POD : MUMBAI PORT, INDIA

HEAVY LIFT : 6 PKG OF 37 MT EACH.

DESCRIPTION : SLAG POT

SCOPE OF WORK : -

- OCEAN FREIGHT FROM TIANJIN TO MUMBAI PORT, INDIA.
- PORT HANDLING AT MUMBAI PORT.



PROJECT EXECUTIONS

POL : MUMBAI PORT, INDIA

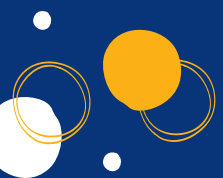
POD : DAMMAM, SAUDI ARABIA

VOLUME : 1472 FRT

DESCRIPTION : STEEL PLATES USE FOR
BOILER.

SCOPE OF WORK : -

- OCEAN FREIGHT FROM MUMBAI PORT TO DAMMAM PORT.
- STEEL PLATES BUNDELING AT POL.



PROJECT EXECUTIONS

POL : MUMBAI PORT, INDIA

POD : JEBEL ALI PORT, UAE

VOLUME : 2700 FRT

HEAVY LIFTS : 1 X 39.5 MT + 1 X 30 MT +
1 X 44 MT + 1 X 49 MT.

SCOPE OF WORK : -

- OCEAN FREIGHT FROM MUMBAI PORT, INDIA TO JEBEL ALI PORT, UAE



PROJECT EXECUTIONS

POL : SHANGHAI, CHINA

POD : MUMBAI PORT, INDIA

VOLUME : 150 FRT (1 X 28 MT PKG)

DIMENSION : 6.1 X 5 X 4.9

DESCRIPTION : SCRAP BUCKET

SCOPE OF WORK : -

- OCEAN FREIGHT FROM POL TO POD
- PORT HANDLING AT MUMBAI PORT.



PROJECT EXECUTIONS

POL : MUMBAI PORT, INDIA

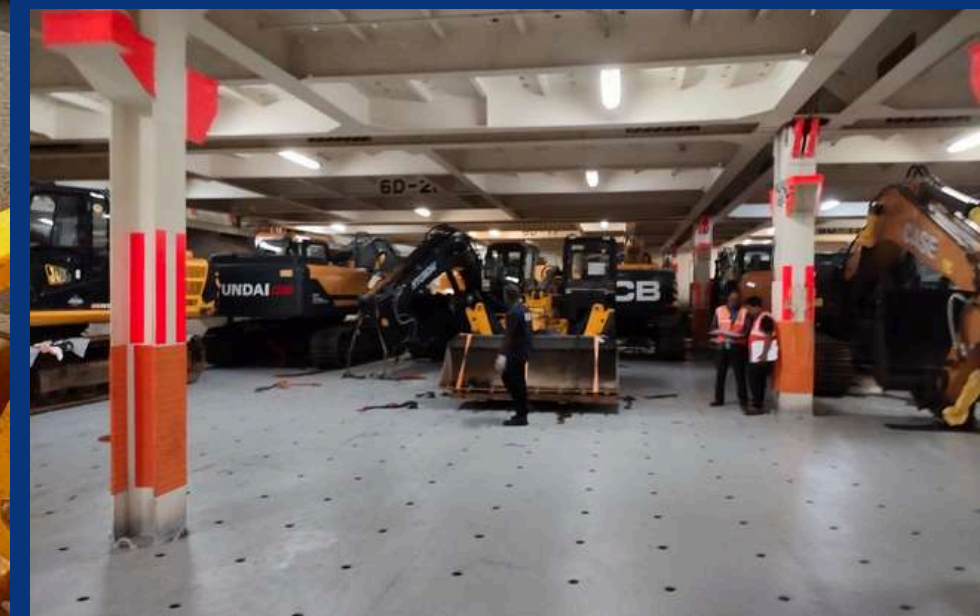
POD : MOMBASA PORT, KENYA

MAX WEIGHT : 22.2 MT

DESCRIPTION : 3 EXCAVATOR (USED) +
ACCESSORIES

SCOPE OF WORK : -

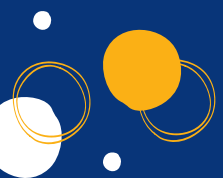
- PORT HANDLING AT MUMBAI PORT.
- PORT HANDLING INCLUDING THE ARRANGEMENT OF FUEL, OFF-LOADING OF CARGO AND MOVEMENT TO BERTH AREA.
- OCEAN FREIGHT FROM POL TO POD



PROJECT EXECUTIONS

SCOPE OF WORK :-

- TRANSPORTATION FROM SHIPPER FACTORY TO MUMBAI PORT ALONG WITH ROUTE SURVEY.
- PORT HANDLING INCLUDES OFFLOADING - RELOADING OF PACKAGES AND MOVEMENT TO THE BERTH AREA.
- PRE & POST INSPECTION + ONBOARD SURVEY, CUSTOM CLEARANCE, AND EXAMINATION AT MUMBAI PORT.
- OCEAN FREIGHT FROM POL TO POD.



PROJECT EXECUTIONS

PICK UP : PUNE

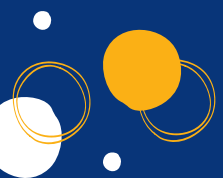
POL : JEBEL ALI + MUMBAI PORT,
INDIA

POD : ISKENDERUN, TURKEY

VOLUME : 3090.67 FRT

HEAVY LIFT : 2 X 92 MT.

DESCRIPTION : RECYCLE GAS COMPRESSOR
+ ACCESSORIES



PROJECT EXECUTIONS

POL : SHANGHAI, CHINA

POD : MUMBAI PORT, INDIA

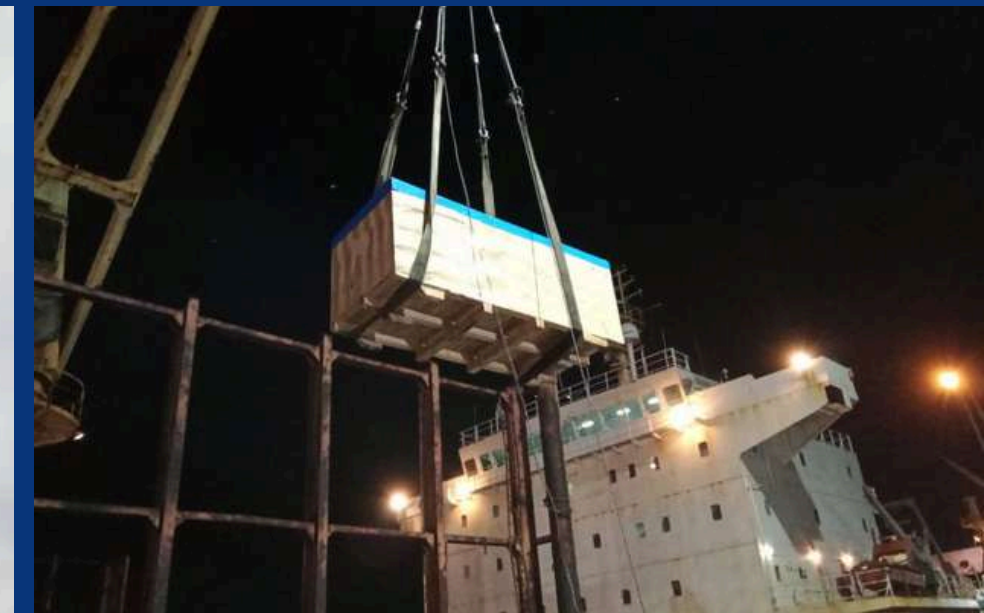
LENGTH : 18.2 METER

DIMENSION : 18.2 X 1.35 X 1.7

DESCRIPTION : PULL ROD ASSEMBLY

SCOPE OF WORK : -

- OCEAN FREIGHT FROM SHANGHAI, CHINA TO MUMBAI PORT, INDIA .



PROJECT EXECUTIONS

POL : SHANGHAI, CHINA

POD : CHENNAI PORT, INDIA

HEAVY LIFT : 2 X 64 MT.

DESCRIPTION : SLAG POT

SCOPE OF WORK : -

- OCEAN FREIGHT FROM SHANGHAI, CHINA TO CHENNAI PORT, INDIA



PROJECT EXECUTIONS

POL : SHANGHAI, CHINA

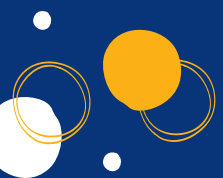
POD : MUMBAI PORT, INDIA

HEAVY LIFT : 3 X 43.5 MT.

DESCRIPTION : SLAG POT

SCOPE OF WORK : -

- OCEAN FREIGHT FROM POL TO POD
- PORT HANDLING AT MUMBAI PORT.



PROJECT EXECUTIONS

PICK UP : WADA BHIWANDI

POL : MUMBAI PORT, INDIA

VOLUME : 780 FRT

HEAVY LIFT : 53 MT, 17 MT, 26 MT, PKGS.

DESCRIPTION : VENT STACK

SCOPE OF WORK : -

- TRANSPORTATION FROM SHIPPER FACTORY TO MUMBAI PORT ALONG WITH ROUTE SURVEY.
- PORT HANDLING INCLUDES OFFLOADING - RELOADING OF PACKAGES AND MOVEMENT TO THE BERTH AREA.
- PRE & POST INSPECTION + ONBOARD SURVEY, CUSTOM CLEARANCE, AND EXAMINATION AT MUMBAI PORT.



PROJECT EXECUTIONS

POL : MUMBAI PORT, INDIA

POD : CONKARY PORT, GUINEA

MAX WEIGHT : 24.2 MT

DESCRIPTION : 6 EXCAVATOR (USED) +
1 WHEEL LOADER +
ACCESSORIES

SCOPE OF WORK : -

- EXPORT CUSTOM CLEARANCE AND PORT HANDLING AT MUMBAI PORT.
- PORT HANDLING INCLUDING THE ARRANGEMENT OF FUEL, OFF-LOADING OF CARGO, RE-LOADING ON AXLE AND MOVEMENT TO BERTH AREA.



PROJECT EXECUTIONS

POL : MUMBAI PORT, INDIA

POD : CONKARY PORT, GUINEA

HEAVY LIFT : 1 X 110 MT

DESCRIPTION : SURFACE MINER

SCOPE OF WORK : -

- EXPORT CUSTOM CLEARANCE AND PORT HANDLING AT MUMBAI PORT.
- PORT HANDLING INCLUDING THE ARRANGEMENT OF FUEL, OFF-LOADING OF CARGO, RE-LOADING ON AXLE AND MOVEMENT TO BERTH AREA.



PROJECT EXECUTIONS

POL : CHENNAI, TAMIL NADU

POD : DUQM PORT, OMAN

WEIGHT : 95 MT

DIMENSION : 15.17 M X 4.37 M X 4.37 M

DESCRIPTION : MILL SHELL

SCOPE OF WORK :-

- TRANSPORTATION FROM RESPECTIVE FACTORY TO CHENNAI PORT.
- EXPORT CUSTOM CLEARANCE AND PORT HANDLING AT CHENNAI PORT.
- OCEAN FREIGHT FROM CHENNAI, TAMIL NADU TO DUQM PORT, OMAN.



PROJECT EXECUTIONS

POL : TIANJIN, CHINA
POD : MUMBAI, INDIA
VOLUME : 389 FRT
HEAVY LIFT : 4 X 43 MT PKGS.
DESCRIPTION : BACKUP ROLLS

SCOPE OF WORK : -

- OCEAN FREIGHT FROM TIANJIN, CHINA TO MUMBAI, INDIA
- RECEIVING THE CARGO UNDERHOCK.
- INTER-CARTING AT POD.



PROJECT EXECUTIONS

POL : HAMBURG, GERMANY

POD : MUMBAI, INDIA

VOLUME : 205 FRT

HEAVY LIFT : 2 X 57, 2 X 40.5 MT PKG

DESCRIPTION : BACKUP ROLLS

SCOPE OF WORK : -

- OCEAN FREIGHT FROM HAMBURG, GERMANY TO MUMBAI, INDIA
- RECEIVING THE CARGO UNDERHOCK.
- INTER-CARTING AT POD.



PROJECT EXECUTIONS

POL : SHANGHAI, CHINA

POD : MUMBAI, INDIA

VOLUME : 775 FRT

HEAVY LIFT : 2 X 105 MT PKG

DESCRIPTION : DRYER AND MIXER

SCOPE OF WORK : -

- OCEAN FREIGHT FROM SHANGHAI, CHINA TO MUMBAI, INDIA



PROJECT EXECUTIONS

POL : KWANGYANG, KOREA

POD : CHENNAI, INDIA

VOLUME : 1,335 FRT

HEAVY LIFT : 1 X 63 TONS + 2 X 53 TONS +
2 X 43 TONS

DESCRIPTION : MACHINERY ITEMS

SCOPE OF WORK : -

- OCEAN FREIGHT FROM KWANGYANG, KOREA TO CHENNAI, INDIA



PROJECT EXECUTIONS

POL : ENNORE PORT

POD : ANGUL, ODISHA

WEIGHT : 62 MT

DIMENSION : 5.96 M X 5.82 M X 4.38 M

DESCRIPTION : SLAG POT

SCOPE OF WORK :-

- ROAD MOVEMENT FROM ENNORE PORT TO ANGUL, ODISHA AFTER MAKING NECESSARY ARRANGEMENTS FOR MOVING THE CARGO THROUGH RAILWAY HIGH TENSION WIRE AT THE PORT



PROJECT EXECUTIONS

POL : TIANJIN, CHINA

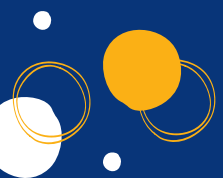
POD : KOLKATA, INDIA

VOLUME : 1,850 FRT

DESCRIPTION : 1 SET OF CLEAN COAL
GASIFIER AND 105 PACKAGES SUPPLY
OF EQUIPMENT (COKE DRY QUENCHING)

SCOPE OF WORK : -

- OCEAN FREIGHT FROM TIANJIN, CHINA TO KOLKATA, INDIA



PROJECT EXECUTIONS

POL : TIANJIN, CHINA

POD : KOLKATA, INDIA

VOLUME : 290 FRT

DESCRIPTION : 7 PKGS CS WELDED FITTINGS

SCOPE OF WORK : -

- OCEAN FREIGHT FROM TIANJIN, CHINA TO KOLKATA, INDIA.



PROJECT EXECUTIONS

POL : MASAN, KOREA

POD : ENNORE, INDIA

HEAVY LIFT : 2 X 62 MT

DESCRIPTION : ROLLS

SCOPE OF WORK : -

- OCEAN FREIGHT FROM MASAN TO ENNORE.
- IMPORT CUSTOM CLEARANCE AT ENNORE PORT WITH PORT HANDLING.
- DESTUFFING FROM MAFI.
- INLAND TRANSPORT FROM ENNORE TO ANGUL, ORRISA.



PROJECT EXECUTIONS

POL : SHANGHAI, CHINA

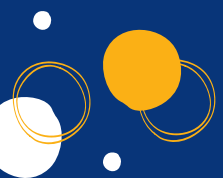
POD : MUMBAI PORT, INDIA

VOLUME : 860 FRT IN 5 LOTS

COMMODITY : HAIR PINS FOR RADIANT &
CONVECTION ASSEMBLY.

SCOPE OF WORK : -

- PROJECT CARGO EXECUTED IN 5 LOTS BY PROVIDING SOLUTION TO CUSTOMER THROUGH BBK MODE BY TAKING EXTREME CARE AT TIME OF LOADING & STOWAGE DUE TO SENSITIVE NATURE OF CARGO.
- PICKUP OF CARGO FROM FACTORY TO PORT LOADING SURVEY AT POL AND PORT HANDLING
- OCEAN FREIGHT FROM POL TO POD.



PROJECT EXECUTIONS

POL : TIANJIN, CHINA

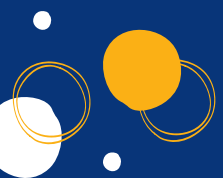
POD : CHENNAI, TAMIL NADU

VOLUME : 127 FRT

DESCRIPTION : 2 X 62 TONS ROLLS

SCOPE OF WORK : -

- OCEAN FREIGHT FROM TIANJIN TO CHENNAI.
- IMPORT CUSTOM CLEARANCE AT CHENNAI PORT WITH PORT HANDLING.
- INLAND TRANSPORT FROM CHENNAI PORT TO ANGUL, ORRISA.



PROJECT EXECUTIONS

POL : SHANGHAI, CHINA

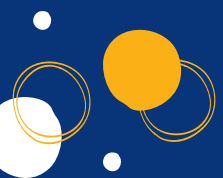
POD : KANDLA, INDIA

VOLUME : 3,765 FRT

DESCRIPTION : 3 X 72 METER LENGTH BLADES
OF 25 MT EACH + ACCESSORIES

SCOPE OF WORK : -

- OCEAN FREIGHT FROM SHANGHAI TO KANDLA PORT.



PROJECT EXECUTIONS

POL : SHANGHAI, CHINA

POD : KANDLA, INDIA

VOLUME : 705 FRT

DESCRIPTION : 2 X PBB OF 18.5 METERS
LENGTH OF 27 MT EACH + ACCESSORIES

SCOPE OF WORK :-

- OCEAN FREIGHT FROM SHANGHAI TO KANDLA PORT.



PROJECT EXECUTIONS

POL : SHANGHAI, CHINA

POD : ENNORE, INDIA

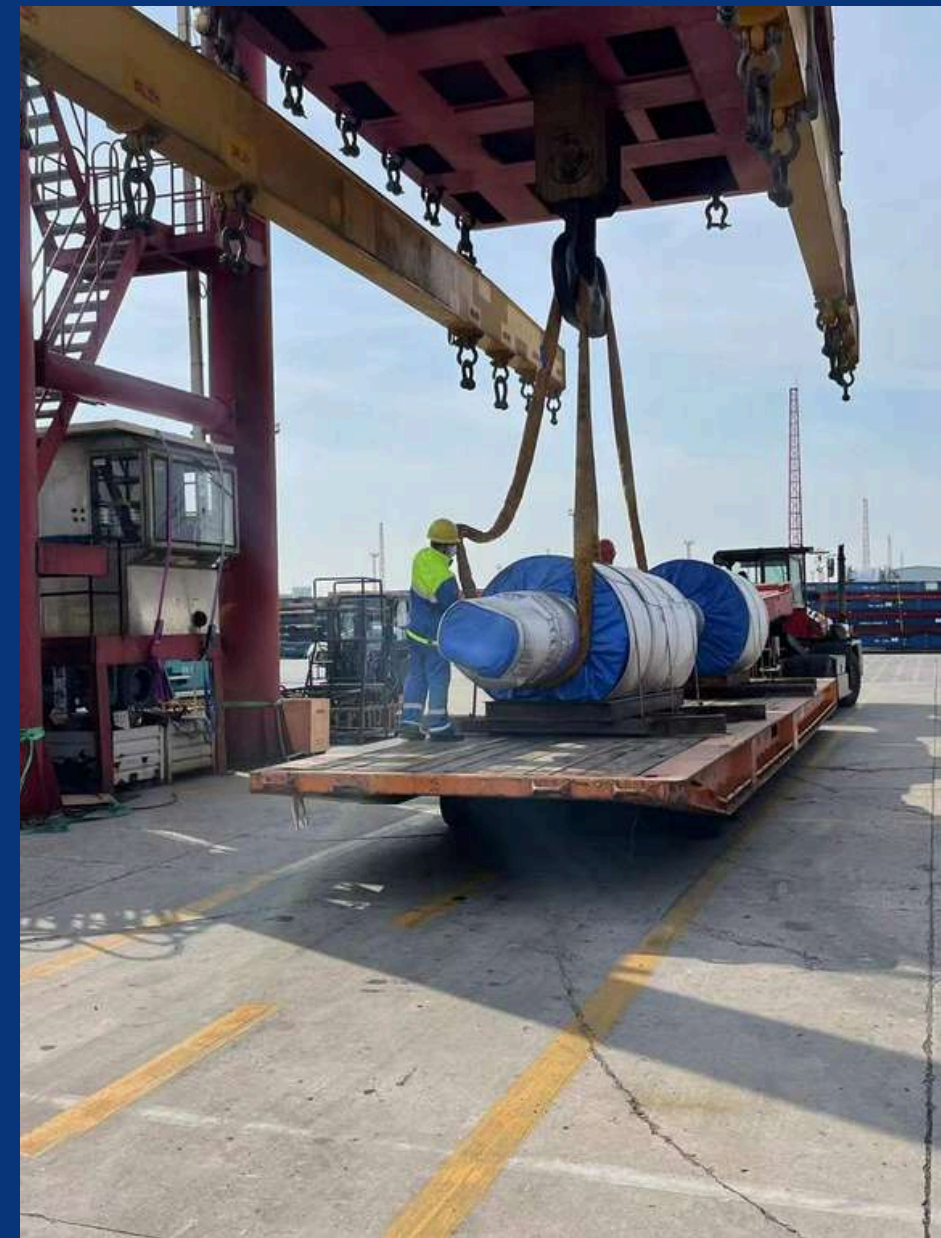
VOLUME : 405 FRT

CARGO : 14 ROLLS

HEAVY LIFTS : 4 X 35 MT

SCOPE OF WORK :-

- OCEAN FREIGHT FROM SHANGHAI TO ENNORE PORT.
- PORT HANDLING - DESTUFFING CARGO FROM MAFI & ARRANGING CRANE FOR OFFLOADING ROLLS FROM MAFI TO TRAILER.



PROJECT EXECUTIONS

POL : TIANJIN, CHINA

POD : KANDLA, INDIA

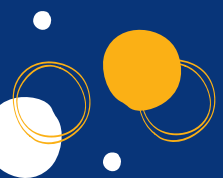
VOLUME : 1,160 FRT

HEAVY LIFTS : 4 X 32 MT

ODC DIMS : 10 X 4.5 X 4.5 M - 4 PKGS

SCOPE OF WORK : -

- OCEAN FREIGHT FROM TIANJIN TO KANDLA PORT.



PROJECT EXECUTIONS

POL : SHANGHAI, CHINA

POD : MUMBAI, INDIA

VOLUME : 127 FRT

HEAVY LIFT : 2 X 63 MT

DESCRIPTION : 2 PKGS FINISHING MILL WORK ROLLS

SCOPE OF WORK : -

- OCEAN FREIGHT FROM SHANGHAI PORT TO MUMBAI PORT.
- TRANSPORTATION FROM MUMBAI PORT TO ANGUL ODISHA.



PROJECT EXECUTIONS

POL : SHANGHAI, CHINA

POD : MUMBAI, INDIA

VOLUME : 78 FRT

HEAVY LIFT : 1 X 57 MT

DESCRIPTION : CLUTCH TYPE HEADER

MACHINE M30 SUITABLE FOR M30X300 HSFG

BOLT

SCOPE OF WORK : -

- OCEAN FREIGHT FROM SHANGHAI, CHINA TO MUMBAI, INDIA



PROJECT EXECUTIONS

POL : HAMBURG, GERMANY

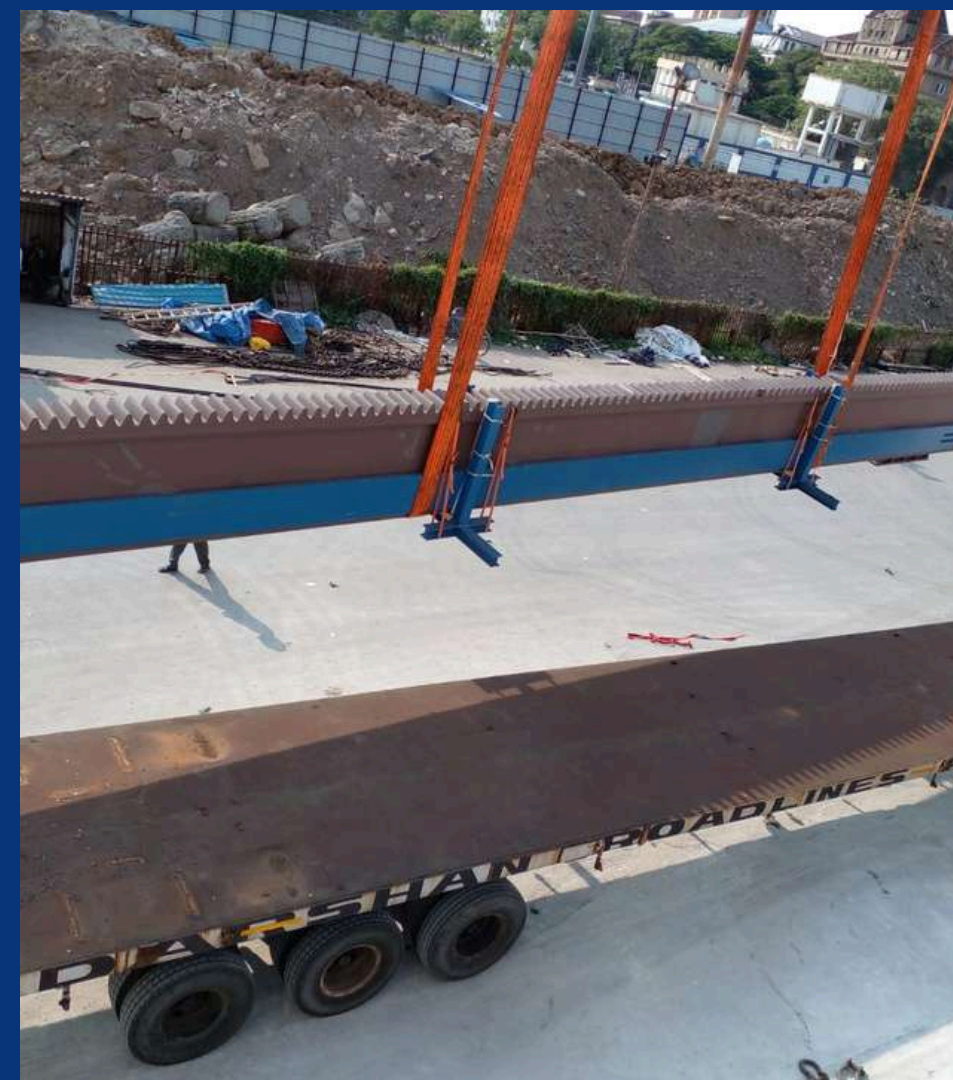
POD : MUMBAI, INDIA

VOLUME : LENGTH - 25 M, WEIGHT - 34 MT

DESCRIPTION : SUPPLY OF EQUIPMENT FOR 3 MILLION TON RECOVERY COKE OVEN PLANT WITH BY PRODUCTS AND CDQ PLANT.

SCOPE OF WORK : -

- CUSTOM CLEARANCE & RECEIVING CARGO UNDER - HOOK.
- TRANSPORTATION FROM MUMBAI PORT TO BELLARY, KARNATAKA.



PROJECT EXECUTIONS

POL : GENOA, ITALY

POD : MUMBAI, INDIA

VOLUME : 2 X 77 MT

DESCRIPTION : 2 PIECES ROLLS FOR PLATE
MILL

SCOPE OF WORK : -

- OCEAN FREIGHT FROM GENOA PORT TO MUMBAI PORT.
- TRANSPORTATION FROM MUMBAI PORT TO RAIGARH, CHATTISGARH.



PROJECT EXECUTIONS

POL : SHANGHAI, CHINA

POD : ENNORE, INDIA

HEAVY LIFT : 1 X 75 TONS

DESCRIPTION : 1 X DDGS DRYER OF 75 MT GR.

WT AND DIMS 13 X 3.7 X 4.3 (LXWXH IN

METERS) + ACCESSORIES

SCOPE OF WORK : -

- OCEAN FREIGHT FROM SHANGHAI TO ENNORE PORT.



PROJECT EXECUTIONS

POL : SHANGHAI, CHINA

POD : MUMBAI PORT, INDIA

VOLUME : 189 FRT

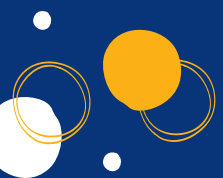
NO. OF PKGS : 9 PKGS

HEAVY LIFTS : 2 X 55 MT PKGS

COMMODITY : COLD ROLLING MILLS

SCOPE OF WORK : -

- OCEAN FREIGHT FROM SHANGHAI, CHINA TO MUMBAI PORT, INDIA.



PROJECT EXECUTIONS

POL : XINGANG, CHINA

POD : KOLKATA, INDIA

VOLUME : 1,230 FRT

HEAVY LIFT : 2 X 35, 2 X 30 MT

DESCRIPTION : SUPPLY OF EQUIPMENT FOR
COKE DRY QUENCHING SYSTEM.

SCOPE OF WORK : -

- OCEAN FREIGHT FROM XINGANG, CHINA TO KOLKATA, INDIA
- TRANSPORTATION FROM KOLKATA PORT, INDIA TO JSPL ANGUL, INDIA



PROJECT EXECUTIONS

POL : SHANGHAI, CHINA

POD : KOLKATA, INDIA

VOLUME : 1,445 FRT

HEAVY LIFT : 2 X 43 MT

DESCRIPTION : SUPPLY OF EQUIPMENT FOR
COKE DRY QUENCHING SYSTEM.

SCOPE OF WORK : -

- OCEAN FREIGHT FROM SHANGHAI, CHINA TO KOLKATA, INDIA
- TRANSPORTATION FROM KOLKATA PORT, INDIA TO ANGUL, INDIA



PROJECT EXECUTIONS

POL : MUMBAI PORT, INDIA

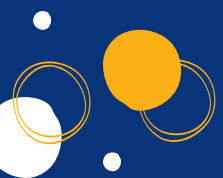
POD : APAPA, NIGERIA

VOLUME : 1,750 FRT

HEAVY LIFT : 7 X 35 MT

SCOPE OF WORK : -

- TRANSPORTATION FROM RESPECTIVE FACTORY TO MUMBAI PORT.
- INTER-CARTING AND CUSTOM CLEARANCE AT MUMBAI PORT.
- OCEAN FREIGHT FROM MUMBAI PORT TO APAPA, NIGERIA.



PROJECT EXECUTIONS

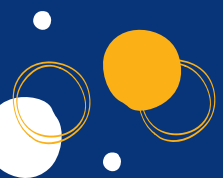
POL : MUMBAI PORT, INDIA

POD : APAPA, NIGERIA

VOLUME : 1,750 FRT

HEAVY LIFT : 7 X 35 MT

COMMODITY : CONCRETE MATTRESS FOR
SUBSEA, TRANSFORMER, 2 HYDRAULIC
MOBILE CRANES & U-BEAM, PART SUPPLY
OF FILTERING & PURIFYING MACHINERY.



PROJECT EXECUTIONS

POL : SHANGHAI, CHINA

POD : MUMBAI, INDIA

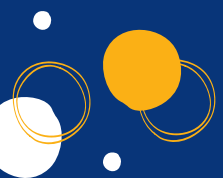
VOLUME : 112 FRT

HEAVY LIFT : 1 X 49 MT

COMMODITY : MACHINERY

SCOPE OF WORK : -

- OCEAN FREIGHT FROM SHANGHAI, CHINA, TO MUMBAI, INDIA.
- IMPORT CUSTOM CLEARANCE AND PORT HANDLING AT MUMBAI PORT.



PROJECT EXECUTIONS

POL : MAGDALLA (HAZIRA), INDIA

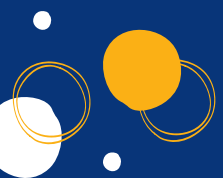
POD : JEBEL ALI, UAE

VOLUME : 7,200 FRT

COMMODITY : STEEL PLATES AND COILS

SCOPE OF WORK : -

- OCEAN FREIGHT FROM MAGDALLA PORT (HAZIRA), INDIA TO JEBEL ALI, UAE.



PROJECT EXECUTIONS

POL : XINGANG, CHINA

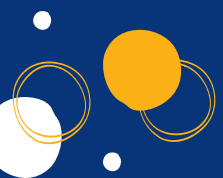
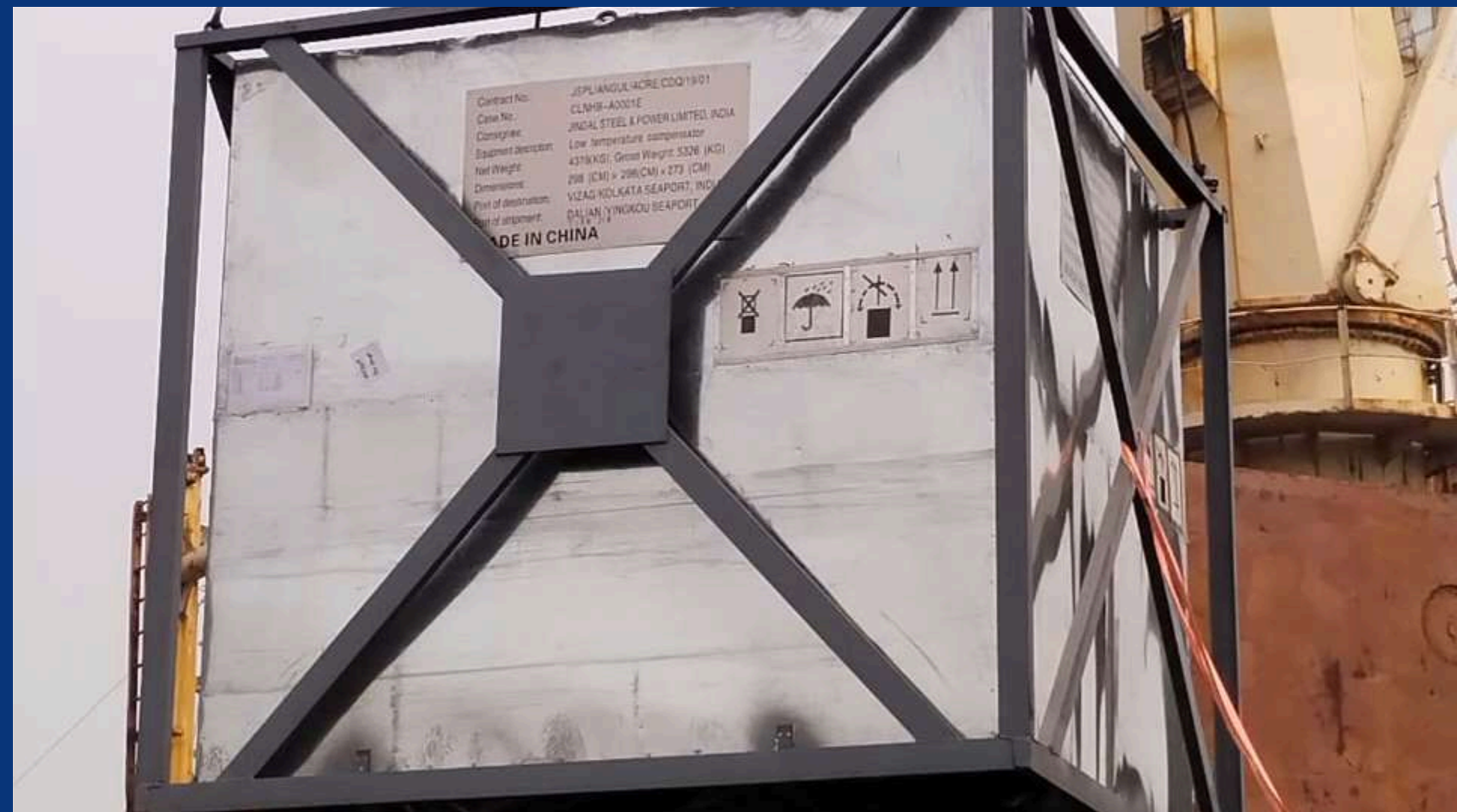
POD : CHENNAI, INDIA

VOLUME : 550 FRT

DESCRIPTION : SUPPLY OF EQUIPMENT FOR
COKE DRY QUENCHING SYSTEM

SCOPE OF WORK : -

- OCEAN FREIGHT FROM XINGANG (TIANJIN), CHINA TO CHENNAI, INDIA



PROJECT EXECUTIONS

POL : SHANGHAI, CHINA

POD : KOLKATA, INDIA

VOLUME : 1,780 FRT

HEAVY LIFT : 6 X 30 MT

DESCRIPTION : SUPPLY OF EQUIPMENT FOR
COKE DRY QUENCHING SYSTEM.

SCOPE OF WORK : -

- OCEAN FREIGHT FROM SHANGHAI, CHINA
TO KOLKATA, INDIA



PROJECT EXECUTIONS

POL : NHAVA SHEVA

POD : JEBEL ALI PORT

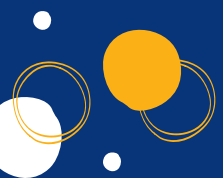
CARGO : OVER SIZE CARGO IN CONTAINERS.

6 X 40' FR, 1 X 40' OT, 1 X 20' GP

INCLUDED 4 PKGS OF 37 TONS EACH WITH
WIDTH AND HEIGHT OVER 5 METERS.

SCOPE OF WORK : -

- PICK UP FROM SHPR'S FACTORY.
- CUSTOM CLEARANCE, PORT HANDLING AT POL.
- OCEAN FREIGHT FROM NHAVA SHEVA TO JEBEL ALI PORT.



PROJECT EXECUTIONS

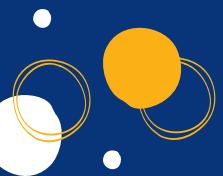
POL : NHAVA SHEVA

POD : HAMBURG PORT

CARGO : OVER SIZE CARGO IN
CONTAINERS.

SCOPE OF WORK : -

- CUSTOM CLEARANCE
- STUFFING IN CONTAINERS
- OCEAN FREIGHT FROM NHAVA SHEVA
TO HAMBURG PORT.
- DOOR DELIVERY TO FINAL
DESTINATION.



PROJECT EXECUTIONS

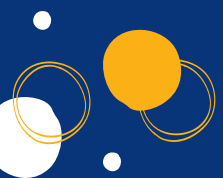
POL : NHAVA SHEVA

POD : VARIOUS PORTS

CARGO : OVER SIZE CARGO IN
CONTAINERS.

SCOPE OF WORK : -

- CUSTOM CLEARANCE
- STUFFING IN CONTAINERS
- OCEAN FREIGHT FROM NHAVA SHEVA
TO VARIOUS PORTS.



PROJECT EXECUTIONS

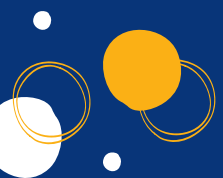
POL : NHAVA SHEVA

POD : VARIOUS PORTS

CARGO : OVER SIZE CARGO IN
CONTAINERS.

SCOPE OF WORK : -

- CUSTOM CLEARANCE
- STUFFING IN CONTAINERS
- OCEAN FREIGHT FROM NHAVA SHEVA
TO VARIOUS PORTS.



PROJECT EXECUTIONS

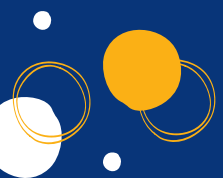
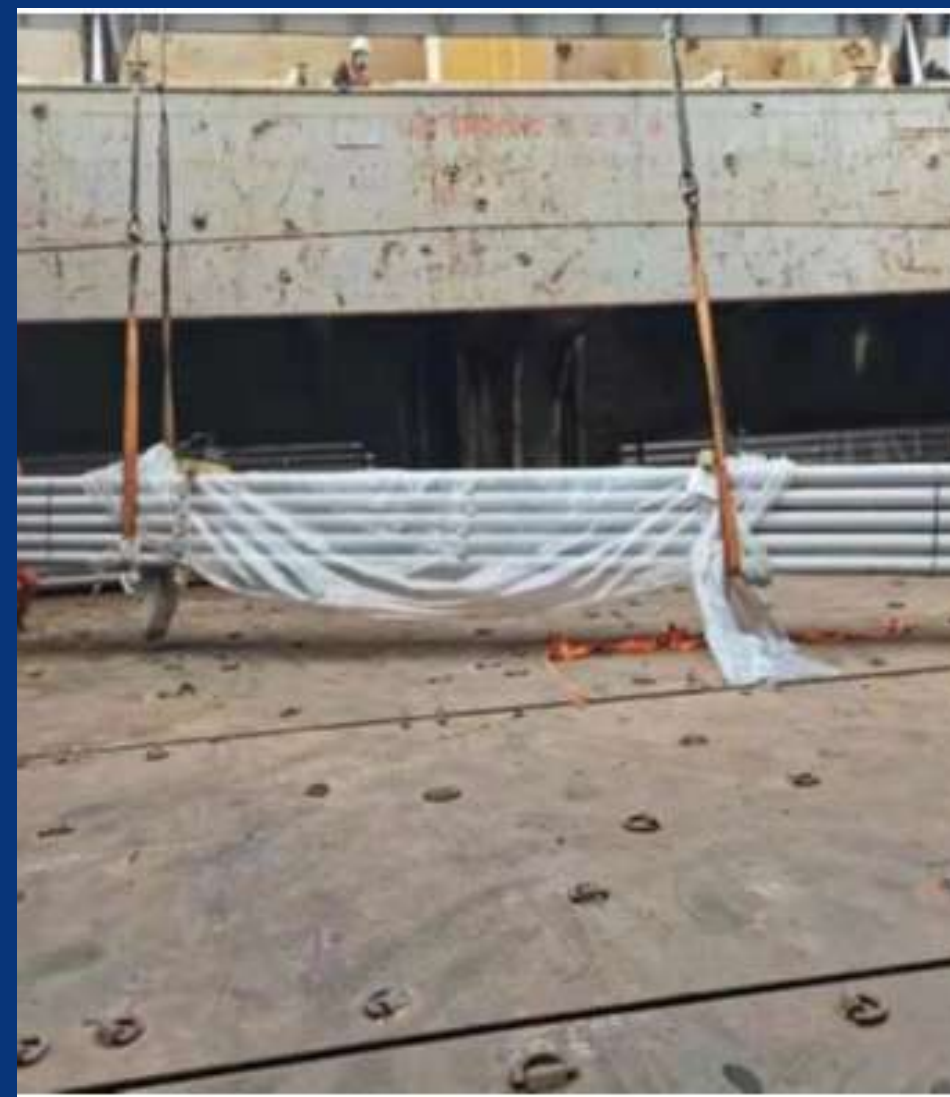
POL : SHANGHAI, CHINA

POD : MUMBAI OLD PORT, INDIA

CARGO : 20 PKGS / 202 FRT

SCOPE OF WORK : -

- PICK UP FROM SHPR'S FACTORY.
- CUSTOM CLEARANCE, PORT HANDLING AT POL.
- OCEAN FREIGHT FROM SHANGHAI TO MUMBAI OLD PORT.



PROJECT EXECUTIONS

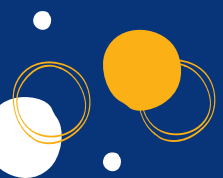
POL : TIANJIN, CHINA

POD : MUMBAI PORT, INDIA

CARGO : 4 X 42 TONS

SCOPE OF WORK : -

- OCEAN FREIGHT FROM TIANJIN TO MUMBAI OLD PORT.



PROJECT EXECUTIONS

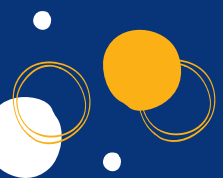
POL : FREEPORT, U.S.A.

POD : MUMBAI PORT, INDIA

CARGO : 2 CRANES + ACCESSORIES

SCOPE OF WORK : -

- OCEAN FREIGHT FROM FREEPORT TO MUMBAI OLD PORT.



PROJECT EXECUTIONS

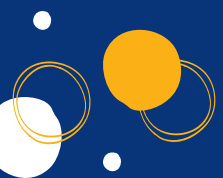
POL : HAZIRA, INDIA

POD : SOHAR, OMAN

CARGO : HR COILS / 228 COILS
/ 5072 MTONS

SCOPE OF WORK :-

- OCEAN FREIGHT FROM HAZIRA TO SOHAR.



PROJECT EXECUTIONS

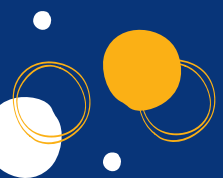
POL : MASAN, KOREA

POD : CHENNAI, INDIA

CARGO : 4 X 62.5 TONS

SCOPE OF WORK : -

- OCEAN FREIGHT FROM MASAN TO CHENNAI.



PROJECT EXECUTIONS

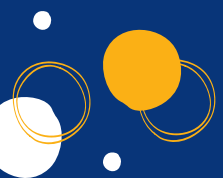
POL : MUMBAI OLD PORT , INDIA

POD : APAPA, NIGERIA

CARGO : 25 PKGS / 1436 FRT

SCOPE OF WORK : -

- PICK UP OF OVERSIZE AND HEAVY LIFT PACKAGES FROM NOIDA, INDIA.
- CUSTOM CLEARANCE AND PORT HANDLING AT MUMBAI PORT.
- OCEAN FREIGHT FROM MUMBAI OLD PORT TO APAPA, NIGERIA



PROJECT EXECUTIONS

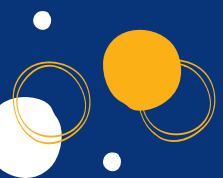
POL : SHANGHAI, CHINA

POD : KOLKATA, INDIA

CARGO : 5 PKGS / 187 FRT

SCOPE OF WORK : -

- OCEAN FREIGHT FROM SHANGHAI TO KOLKATA.



PROJECT EXECUTIONS

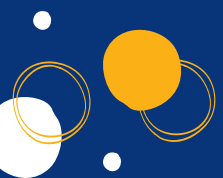
POL : TIANJIN, CHINA

POD : KOLKATA, INDIA

CARGO : 142 PKGS / 2915 FRT

SCOPE OF WORK : -

- OCEAN FREIGHT FROM TIANJIN TO KOLKATA.



PROJECT EXECUTIONS

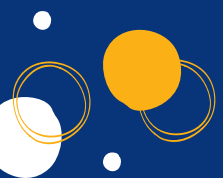
POL : MUMBAI PORT, INDIA

POD : JEBEL ALI, UAE

CARGO : 28 PKGS / 204 FRT

SCOPE OF WORK : -

- OCEAN FREIGHT FROM POL TO POD



PROJECT EXECUTIONS

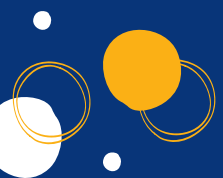
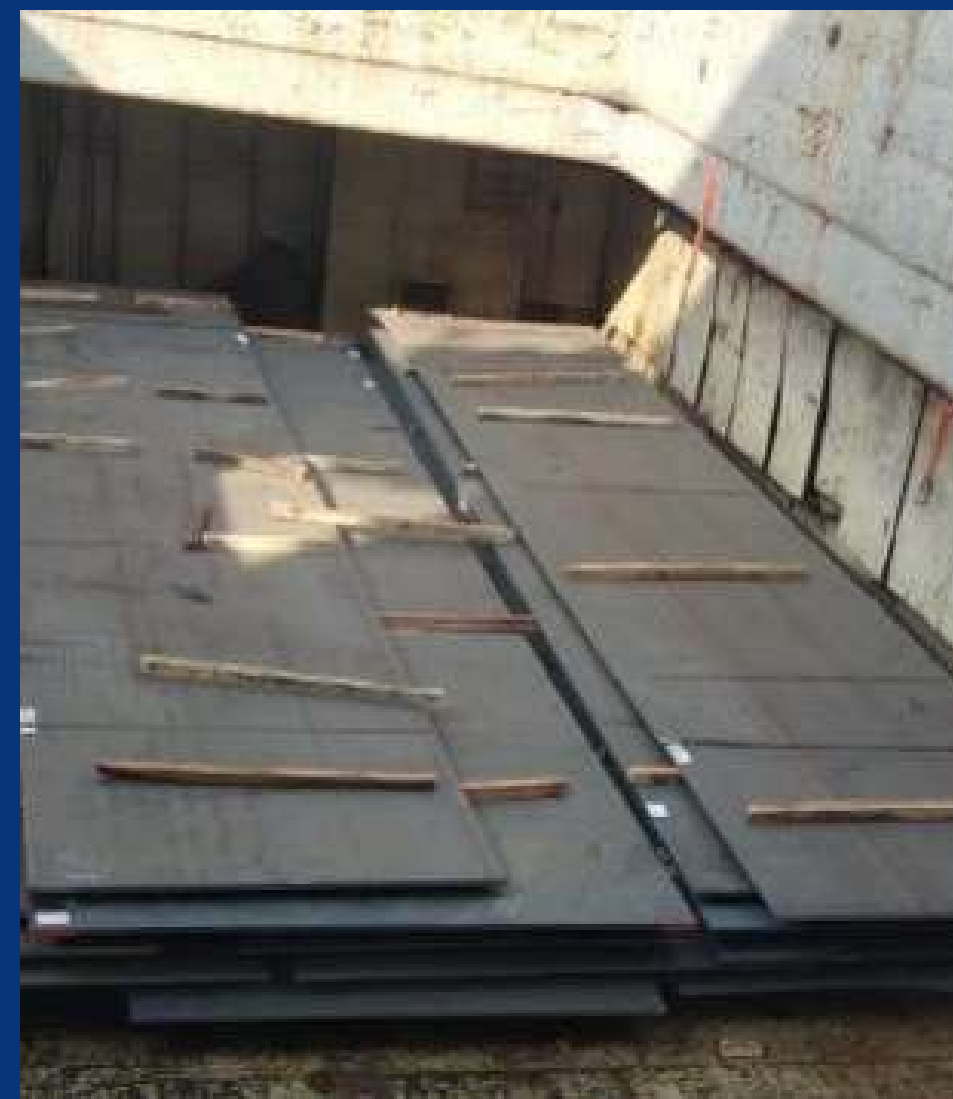
POL : MUMBAI PORT, INDIA

POD : JEBEL ALI, UAE

CARGO : STEEL PLATES / 358 FRT

SCOPE OF WORK :-

- PICK UP FROM SHPR'S FACTORY.
- CUSTOM CLEARANCE, PORT HANDLING AT POL.
- OCEAN FREIGHT FROM POL TO POD



PROJECT EXECUTIONS

POL : SANTANDER, SPAIN

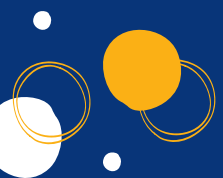
POD : HAIPHONG, VIETNAM

CARGO : 45 PKGS / 373 FRT

HEAVY LIFTS : 2 X 54 TONS, 2 X 48 TONS

SCOPE OF WORK : -

- PICK UP FROM SHPR'S FACTORY.
- CUSTOM CLEARANCE, STUFFING AND LASHING AT POL.
- OCEAN FREIGHT
- DE-LASHING AND OFFLOADING AT POD.



PROJECT EXECUTIONS

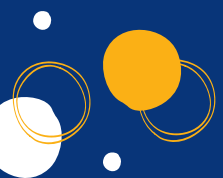
POL : XINGANG, CHINA

POD : KOLKATA, INDIA

CARGO : 2 PKGS / 174 TONS

SCOPE OF WORK : -

- OCEAN FREIGHT FROM XINGANG, CHINA TO KOLKATA, INDIA



PROJECT EXECUTIONS

HEAVY LIFT TRANSPORTATION :-

POL : CHENNAI, INDIA

POD : ANGUL, INDIA

CARGO : 2 X 62.5 TONS

SCOPE OF WORK :-

- LOCAL TRANSPORTATION OF 2 HEAVY PACKAGES FROM CHENNAI PORT TO ANGUL, ORISSA ON HYDRAULIC AXLES.



PROJECT EXECUTIONS

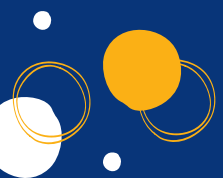
POL : SHANGHAI, CHINA

POD : KOLKATA, INDIA

CARGO : 10 PKGS PACKAGES, 526 FRT.

SCOPE OF WORK : -

- OCEAN FREIGHT FROM SHANGHAI, CHINA TO KOLKATA, INDIA ON A BREAKBULK VESSEL.



PROJECT EXECUTIONS

POL : BREMERHAVEN, GERMANY

POD : MUMBAI OLD PORT, INDIA

CARGO : 10 CHASIS, 672 FRT.

SCOPE OF WORK :-

- OCEAN FREIGHT FROM BREMERHAVEN, GERMANY TO MUMBAI OLD PORT, INDIA ON A RORO VESSEL.



PROJECT EXECUTIONS

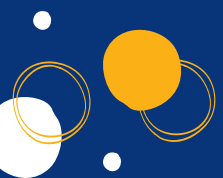
POL : TIANJIN, CHINA

POD : KOLKATA, INDIA

CARGO : 19 PKGS PACKAGES, 456 FRT.

SCOPE OF WORK : -

- OCEAN FREIGHT FROM TIANJIN, CHINA TO KOLKATA, INDIA ON A BREAKBULK VESSEL.



PROJECT EXECUTIONS

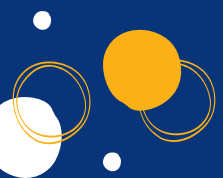
POL : HAMBURG, GERMANY

POD : MUMBAI, INDIA

CARGO : 2 X 52 TONS PKGS

SCOPE OF WORK : -

- OCEAN FREIGHT FROM HAMBURG, GERMANY TO MUMBAI OLD PORT, INDIA ON A BREAKBULK VESSEL.



PROJECT EXECUTIONS

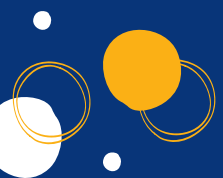
POL : SHANGHAI, CHINA

POD : CHENNAI, INDIA

CARGO : 21 OVERSIZE PACKAGES, 1390 FRT

SCOPE OF WORK : -

- OCEAN FREIGHT FROM SHANGHAI, CHINA TO CHENNAI, INDIA ON A BREAKBULK VESSEL.



PROJECT EXECUTIONS

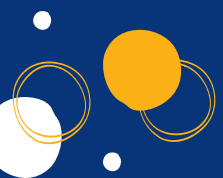
POL : SHANGHAI, CHINA

POD : CHENNAI, INDIA

CARGO : 22 OVERSIZE PACKAGES, 505 FRT.

SCOPE OF WORK : -

- OCEAN FREIGHT FROM SHANGHAI, CHINA TO CHENNAI, INDIA ON A BREAKBULK VESSEL.



PROJECT EXECUTIONS

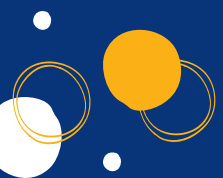
POL : SHANGHAI, CHINA

POD : CHENNAI, INDIA

CARGO : 17 OVERSIZE PACKAGES, 600 FRT

SCOPE OF WORK : -

- OCEAN FREIGHT FROM SHANGHAI, CHINA TO CHENNAI, INDIA ON A BREAKBULK VESSEL.



PROJECT EXECUTIONS

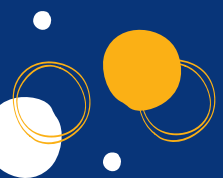
POL : XINGANG, CHINA

POD : HALDIA, INDIA

CARGO : 1 OVERSIZE PACKAGES, 62 FRT. T

SCOPE OF WORK : -

- OCEAN FREIGHT FROM XINGANG, CHINA TO HALDIA, INDIA ON BREAKBULK VESSEL.



PROJECT EXECUTIONS

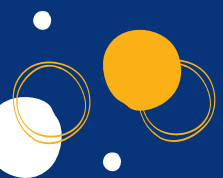
POL : JEBEL ALI, UAE

POD : ENNORE, INDIA

CARGO : 50 OVERSIZE PACKAGES, 924 FRT

SCOPE OF WORK : -

- OCEAN FREIGHT FROM JEBEL ALI, UAE TO ENNORE PORT ON RORO VESSEL.



PROJECT EXECUTIONS

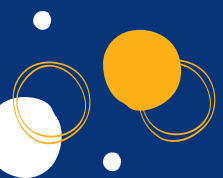
POL : HAIFA, ISRAEL

POD : NHAVA SHEVA

CARGO : 1 X 60 TONS CRANES +
ACCESSORIES (IN 4 CONTAINERS).

SCOPE OF WORK : -

- PICK UP FROM SHPR'S LOCATION.
- STUFFING OF CONTAINERS.
- LOADING OF MAIN UNITS ON VESSEL.
- OCEAN FREIGHT FROM HAIFA TO NHAVA SHEVA.



PROJECT EXECUTIONS

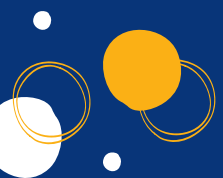
POL : PORT LOUIS, MAURITIUS

POD : MUMBAI OLD PORT

CARGO : 2 OVER SIZE CRANES +
ACCESSORIES ON MAFIS.

SCOPE OF WORK :-

- OCEAN FREIGHT FROM PORT LOUIS TO MUMBAI OLD PORT ON RORO VESSEL.



PROJECT EXECUTIONS

POL : HAIFA, ISRAEL

POD : NHAVA SHEVA

CARGO : 2 X 60 TONS CRANES + ACCESSORIES
(IN 7 CONTAINERS).

SCOPE OF WORK : -

- PICK UP FROM SHPR'S LOCATION.
- STUFFING OF CONTAINERS.
- LOADING OF MAIN UNITS ON VESSEL.
- OCEAN FREIGHT FROM HAIFA TO NHAVA SHEVA.
- MOVEMENT OF MAIN UNIT & CONTAINERS TO CFS.



PROJECT EXECUTIONS

POL : SHANGHAI

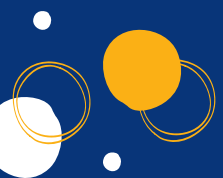
POD : MUMBAI OLD PORT

CARGO : BREAKBULK CARGO (230 CBM)

HEAVY LIFTS : 1 X 99 TONS, 1 X 68
TONS

SCOPE OF WORK : -

- CUSTOM CLEARANCE AT MUMBAI
OLD PORT
- PORT HANDLING AND
- TRANSPORTATION FROM MUMBAI
OLD PORT TO AURANGABAD.



PROJECT EXECUTIONS

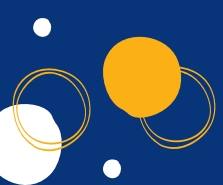
POL : HAMBURG

POD : PORT KLANG

CARGO : 5 OVER SIZE BREAKBULK
PACKAGES + 2 CONTAINERS.

SCOPE OF WORK : -

- OCEAN FREIGHT FROM HAMBURG TO PORT KLANG
- RECEIVING THE CARGO UNDER HOOK OF THE VESSEL.
- CUSTOM CLEARANCE AT POD.
- DOOR DELIVERY OF ALL PACKAGES.



CONTACT US : -



PROLOG INDIA PRIVATE LIMITED



+91 9819606881



+91 (22) 4970 7007



info@prologindia.com



www.prologindia.com



B-804, 8TH FLOOR, SAGARTECH PLAZA
PREMISES, SAKINAKA JUNCTION, ANDHERI -
KURLA ROAD, ANDHERI EAST, MUMBAI - 400072