

Korea Total Logistics

한국종합물류

Transportation Performance

CONTENTS

- EXPERIENCE LIST
- CASE (1) ,(2) ,(3) ,(4) ,(5)
- CASE (6) ,(7),(8)
- EXECUTION PROCESS
- VOYAGE ANALYSIS
- RISK MANAGEMENT OUTLINE
- LOGISTICS PERFORMANCE STRATEGY

EXPERIENCE LIST

2024

EUMSEUNG COMBINED CYCLE POWER PLANT PJT (POSCO E&C)
POSCO FUTURE M (CATHODE ACTIVE MATERIAL)
ARGENTINA LITHIUM CHLORIDE 2 STAGE PJT (POSCO E&C)

2023

PANAMA GATUN COMBINED CYCLE POWER PLANT PJT (POSCO E&C)
PANAMA COLON EXTENSION OF TERMINAL PJT (POSCO E&C)
Matarbari, Bangladesh PJT (POSCO E&C)

2022

PANAMA METRO 3 LINE (POSCO E&C)
HYUNDAI FRONTIER (HYUNDAI ENGINEERING & STEEL INDUSTRIES)

2021 ~

GYEONGBUK SOLAR PANEL MODULE (POSCO DAEWOO)
BLACK & DECKER (SAMSUNG SDI & LG ENERGY SOLUTION)
VIETNAM LSP TANK FARM PJT (POSCO E&C)

EXPERIENCE LIST

2017 ~

POSCO DAEWOO / KYOUNGBUK COIL CHINA COIL
CNTR SHIPPING MODE
POSCO DAEWOO JAPAN COIL SHIPPING
POSCO E&C / POSCO MAHARASHTRA STEEL INDIA

2015 ~

BRAZIL CSP PJT (POSCO E&C)
CHARTER AIR CRAFT CHINA-FOR
CHARTERING
POSCO PNS KWANGYANG-LAGOS BULK
DK BUSAN – JAKARTA COIL
DONGBU STEEL BUSAN – NOVOROSSIYSK
COIL

2013 ~

DAEWOO INTER BUSAN-JEBEL
“ BATTERY “ BY CNTR
POSCO PNS KWANGYANG-LAGOS, BULK

1. POSCO INTER COIL TRANSPORTATION

PERFORMANCE

PERIOD : 2014.12 ~ 2020

ITEM : STS COIL

WORKSHOPS BUSAN

: POSCO AST/P&S , KYOUNGBUK STEEL , IRE

POL : BUSAN , KOREA

POD : MELBOURNE , CHINA , JAPAN

TOTAL VOLUME : 60,000 / MT



2. POSCO MAHARASHTRA INDIA TRANSPORTATION

PERFORMANCE

PERIOD : 2016.1 ~ 2016

ITEM : COIL

POL : BUSAN

POD : NHAVA SHEVA INDIA

TOTAL VOLUME : 24,000 / MT



3. 2024 EUMSEUNG COMBINED CYCLE POWER PLANT PJT

PERFORMANCE

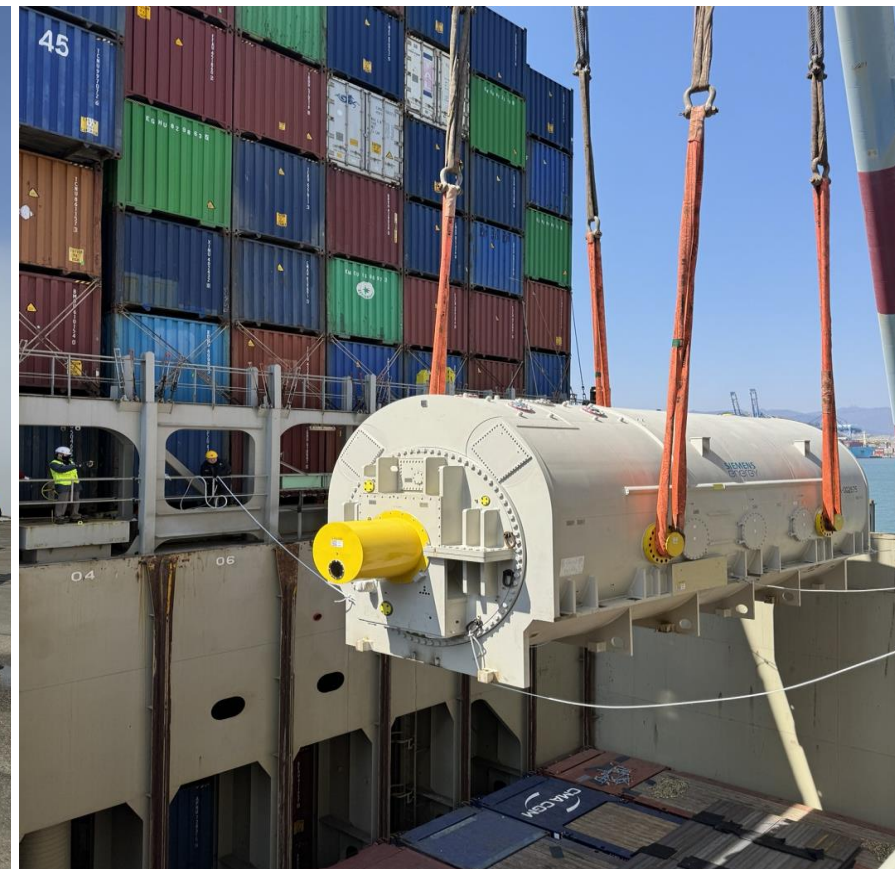
PERIOD : 2023 .12 – 2024. 08

ITEM : Construction materials

POL : Bremerhaven, DE

POD : BUSAN, MASAN

TOTAL VOLUME : 26,000 /MT



4. 2024 POSCO FUTURE M

PERFORMANCE

PERIOD : 2023 .10- 2024

ITEM : Cathode material

POL : INCHEON AIRPORT

POD: CHICAGO AIRPORT

TOTAL VOLUME : 600 /MT



5. 2023 PANAMA GATUN COMBINED CYCLE POWER PLANT

PERFORMANCE

PERIOD : 2023 .03 – 2023. 12

ITEM : Construction materials

POL : ASIA, EU, USA

POD : Manzanillo, PA

TOTAL VOLUME : 25,000 /MT



6. 2022 HYUNDAI FRONTIER BY HESI

PERFORMANCE

PERIOD : 2022 – 2024

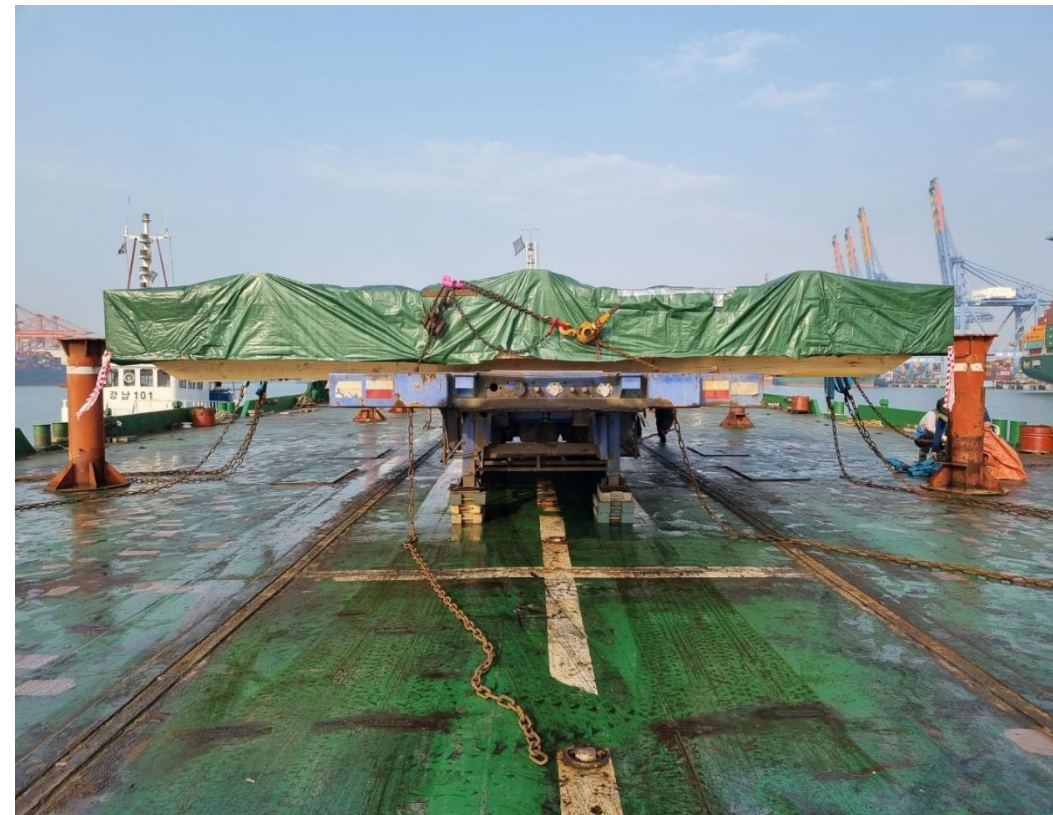
ITEM : TOWER CRANE

WORKSHOPS: HSG SEONGDONG SHIPYARD

POL : EU, MALAYSIA ,JAPAN

POD : BUSAN, MASAN , TONGYEONG

TOTAL VOLUME : 35,000 /MT



7. DK BUSAN – JAKARTA COIL

PERFORMANCE

PERIOD : 2015.1 ~ 2016.03

ITEM : COIL

POL : BUSAN

POD : JAKARTA

TOTAL VOLUME : 18,000 / MT



8. DONGBU STEEL BUSAN – NOVOROSSIYSK COIL , BULK

PERFORMANCE

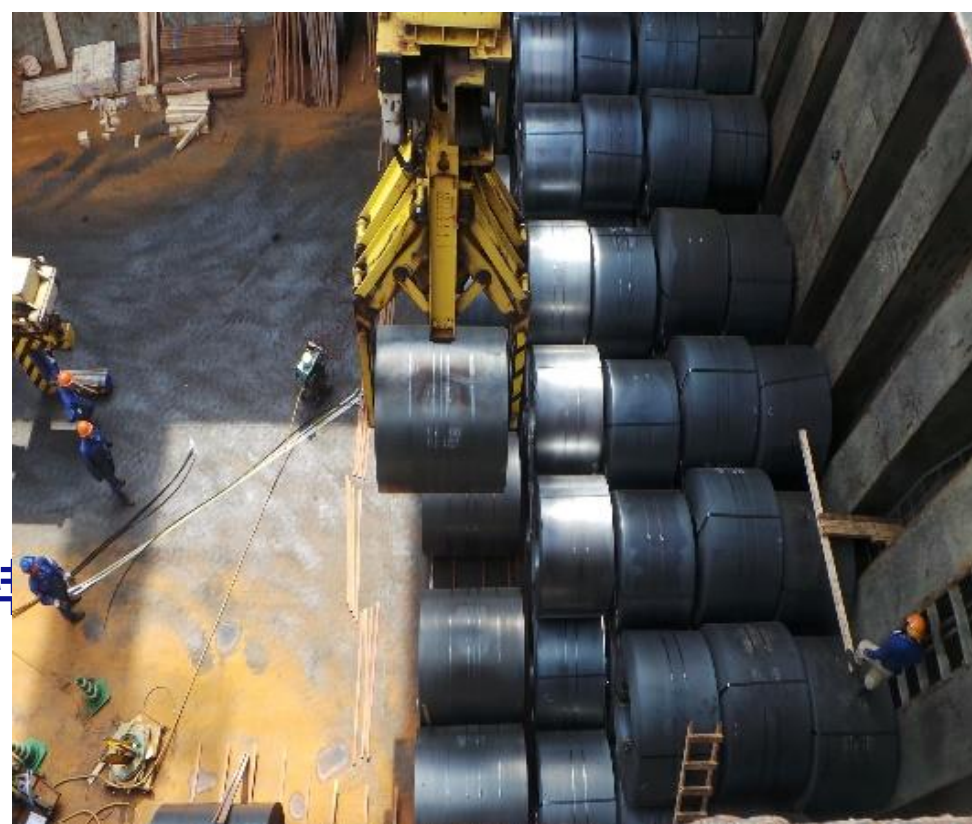
PERIOD : 2015.1 ~ 2016

ITEM : COIL

POL : BUSAN

POD : NOVOROSSIYSK ,RUSSIA

TOTAL VOLUME : 12,000 / MT



EXECUTION PROCESS

1. Cargo Detail Receipt

- Cargo Readiness
- Cargo Inspection

2. Shipping Mode Check

- H/LO – Break Bulk
- General –CNTR

3. Suitable Carrier

- Break-Bulk Carrier
- CNTR Carrier
- Air Carrier – sub. POCCO's request.

4. Shipping

- Cargo Safety Inspection
- Stowage Plan
- Lashing Plan
- Loading Supervision

5. Cargo Tracking

- B/L & Shipping doc. Issuance
- Vessel Schedule / Position Report
- Expedite to meet agreed schedule

6. ON-Shore Coordination

- Preparation of equipment
- Review of final route
- Vessel Itinerary Updates
- Attending discharging operation

7. Discharging

- Arrangement of Equipment
- Stevedore Plan
- Discharging Sequence Plan
- Discharging Supervision

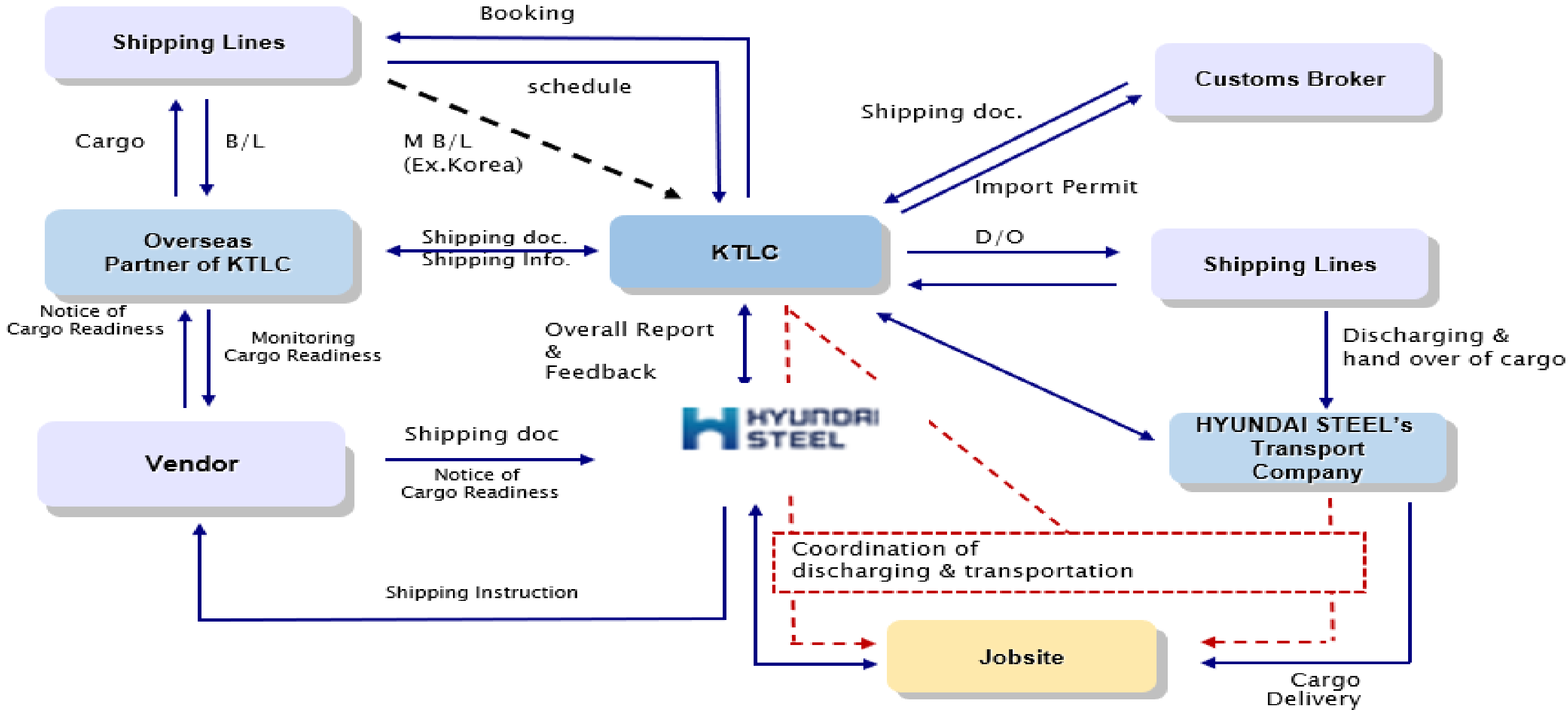
8. On shore Transportation

- Suitable equipment
- Suitable lashing plan
- Review of route, obstacle clearance, permit & etc.

9. Performance Completion

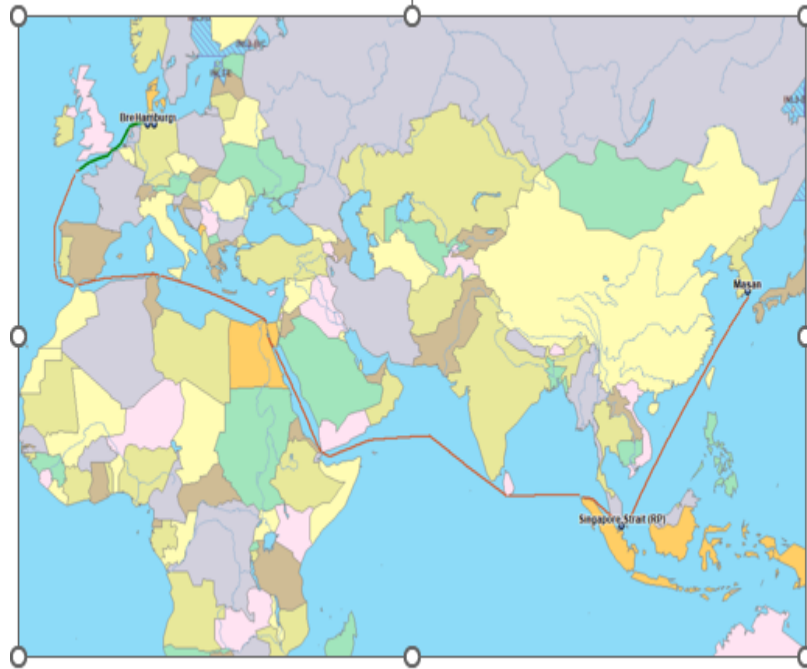
- Review & Monitor

EXECUTION PROCESS



VOYAGE ANALYSIS

From Europe(Bremerhaven, Hamburg 외) to Korea



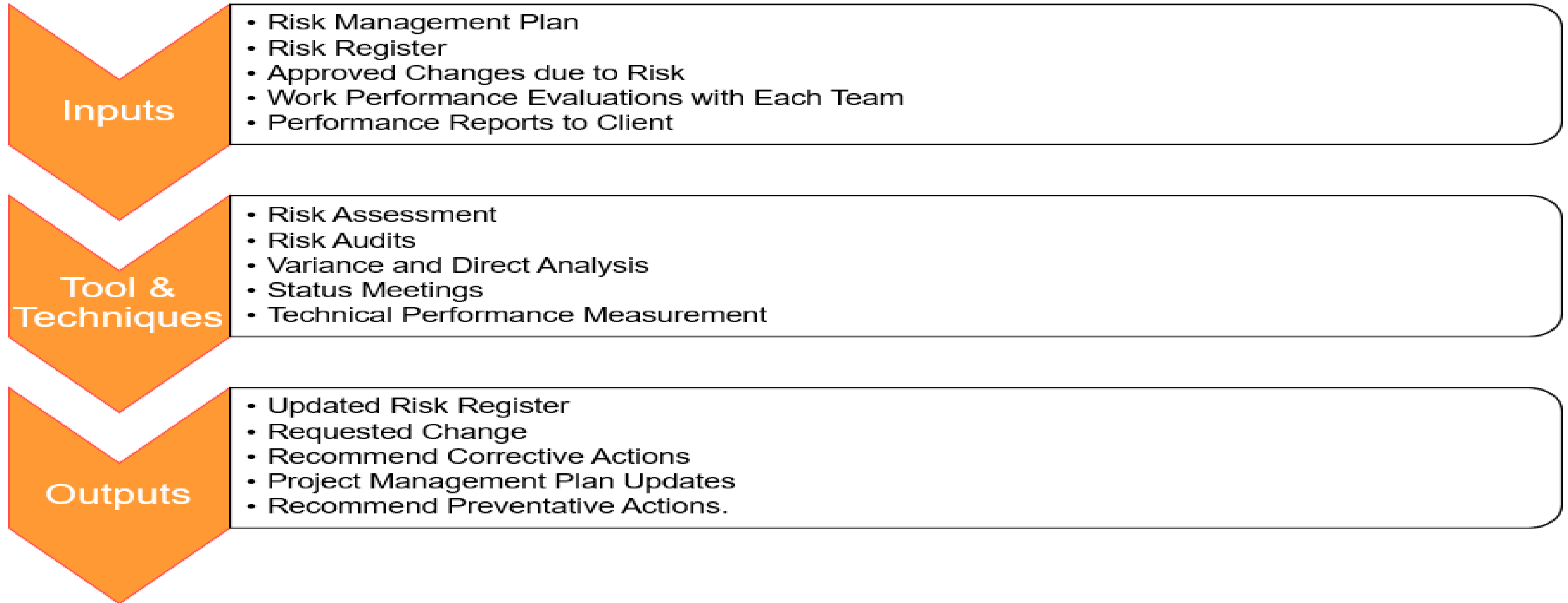
Route	Bremerhaven – Med,Sea – (PG) (India) – (E.S Asia) – Singapore- (Ch)
Distance	11,300NM Direct route
Transit Time	<ul style="list-style-type: none"> Container : abt 45 days Bulk : abt 55~65days(Indirect) RORO : abt 48 days
Frequency	<ul style="list-style-type: none"> Container : Weekly Bulk/RORO : Monthly
Container Carrier	Maersk / Hapag / MSC
Bulk / RORO Carrier	<ul style="list-style-type: none"> Liner: Jumbo-SAL / AAL & etc Tramper : BBC / UHL & etc RORO : EUKOR
Remark	Subject to minimum inducement, carrier's position & itinerary

sample

1-1. From Europe(Bremerhaven, Hamburg 외) to Korea

- **Bulk Shipment 분석 및 전략**
- A. 선적대상 주기기 & OWDC(Over weight & dimension cargo) :
 - GT(313ton), HIP Turbine(137ton) 등 main heavy item 외
 - 예상되는 OWDC item : ex) LP Rotor(51ton) + LP Inner Casing(39.5ton)등의 cargo list 사전 확보
- B. Shipment arrangement :
 - Main item별 선적일정 사전 확인하여 중량물 BULK항차 최소화.
 - OWDC 별도 배선 시 Bulk外 RORO, Container BB 검토
- C. Schedule 관리
- **Vessel Itinerary :**
 - => heavy carrier의 voyage 시작 지점인 Europe main port에서 선적되어 Italy – 중동 – 인도 – 동남아 – 중국/한국 Route 가 일반적인 경로로 transit time 55 ~ 60days를 고려해야 함.
 - => booking 전 유럽 – 인도/동남아/중국 등의 main 화물과 예상 itinerary 를 확인하여 예상 transit time 및 deviation 대비.
- **Special arrangement**
 - * Container breakbulk : 유럽-한국(부산) direct calling container에 선적 / Transit Time 약 45days
 - => Loading port는 Bremerhaven외 Rotterdam / Hamburg 고려, discharging port는 부산항

RISK MANAGEMENT OUTLINE



LOGISTICS PERFORMANCE STRATEGY

- **Off-shore Transportation**

- A. Coordination with Vendor**

- We nominate partners with the same project experience and capabilities as the vendor and manage them closely from before shipment to the vendor shop to ensure timely shipment, minimize storage charge/port double handling, and perform document coordination.

- B. Container BB / Bulk Shipment**

- Analyze the schedule and list of main equipment and accessories for each origin and promote timely distribution. - If necessary, conduct preliminary review and preparation for special shipments such as Container Break Bulk and RORO as alternatives.

- C. Container Shipment**

- In preparation for the shortage of container ships, maintain stable shipments through carriers and SCs. - Warehouse designation management for efficiency of FCA (Container stuffing / Terminal handling) work and damage prevention – when necessary.

감사합니다

Thank you