



Experts in Project and Industrial Logistics

JULY 2024 – PROJECT CARGO NETWORK

 noatum project cargo

NPC USA

INDEX

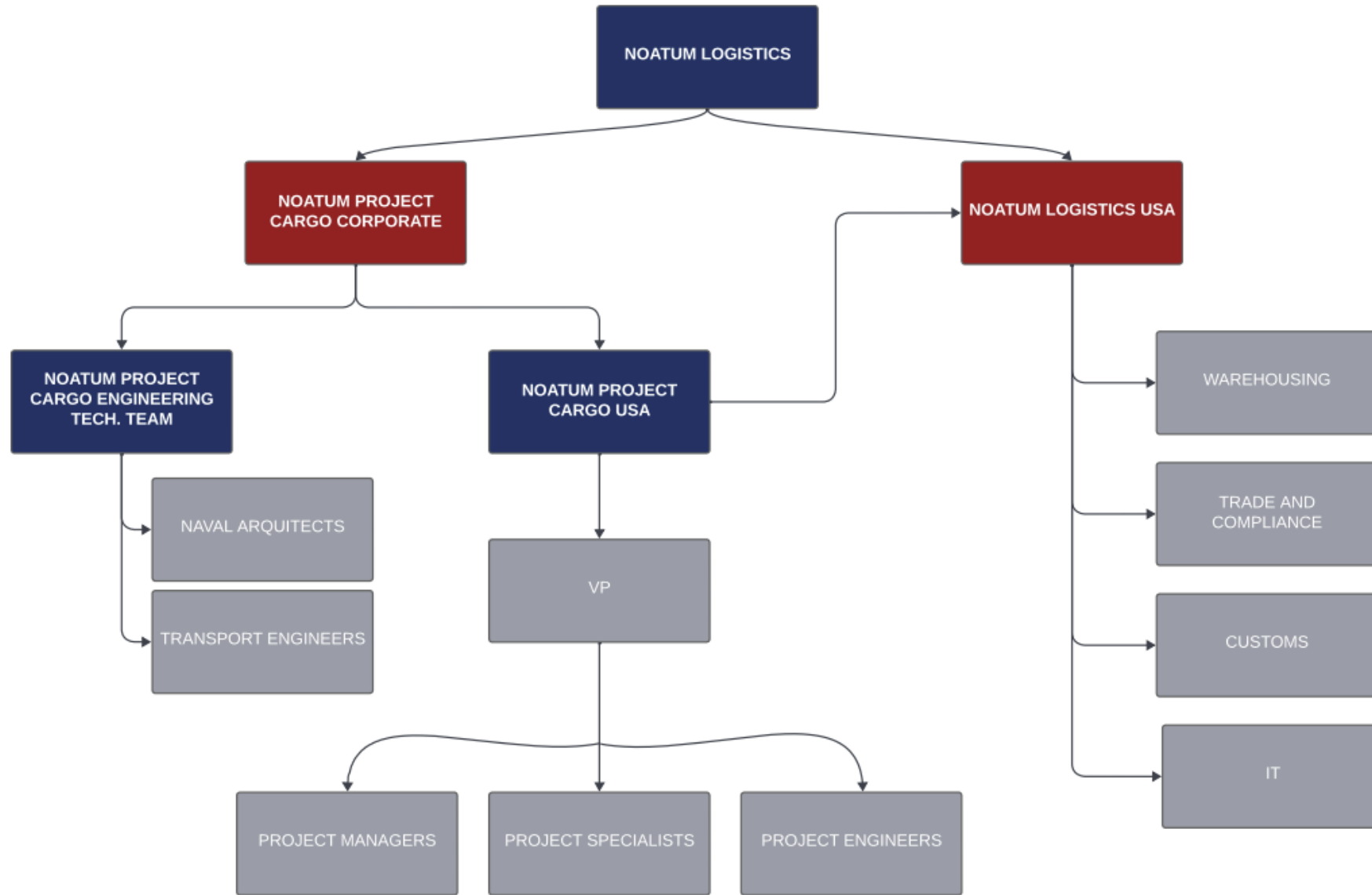
1. NL USA / NPC USA
2. WHY US
3. 2022 & 2023 US EXECUTIONS

1

NL USA / NPC USA

NPC USA

- CHARTERING (RORO, LOLO,HL...)
- BARGING
- RAIL
- HEAVY HAUL
- RIGGING
- FCL (OOG) INCL. LASHING AND STUFFING
- CROSSBORDER OOG CA/US/MX
- SURVEYAGES
- PORT VISITS
- SITE VISITS
- PROJECT MANAGEMENT



2

WHY US

Methodology

1. Analysis

- > Equipment/Material analysis.
- > Infrastructure Analysis.
- > Regulations, procedure, permit.

2. Design

- > Setting-up of infrastructure.
- > Conditioning the cargo.
- > Transportation equipment design.
- > Strategic partners.

3. Planification

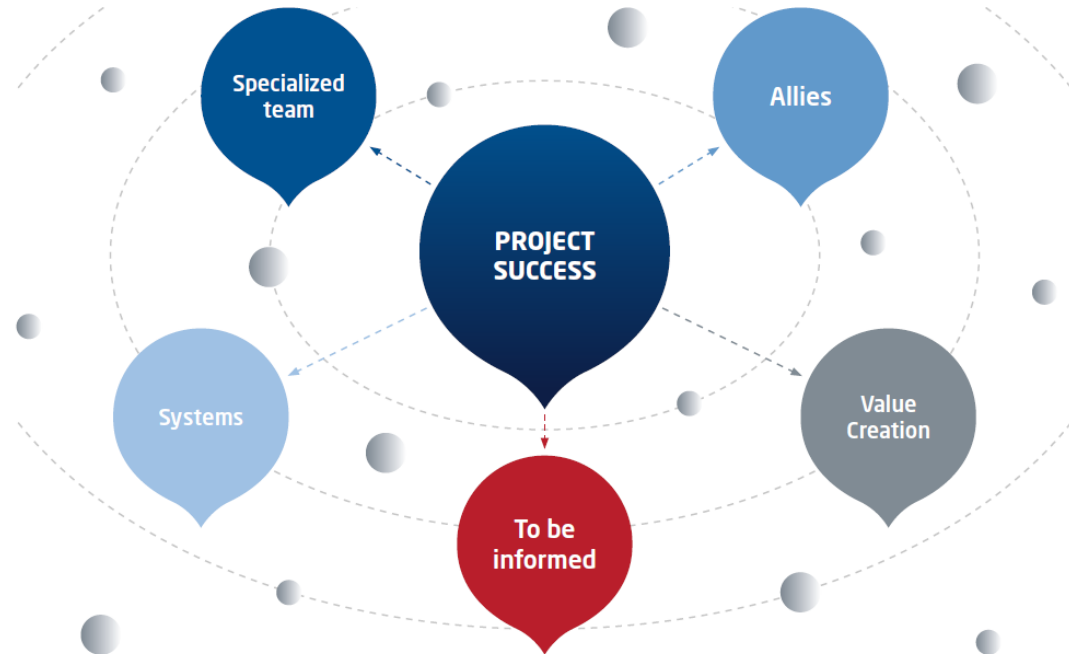
- > Schedule of activities.
- > Transport plans.
- > Port activities.
- > Warehouse activities.

4. Execution

- > Start up.
- > Operations supervision.
- > Integrated security system.
- > Control.
- > Measurement and correction.



Key to success



Specialized team

- > Project experience.
- > Commitment.
- > Team collaboration.
- > Sense of urgency.

Allies

- > Specialized subcontractors.
- > Safety oriented.
- > Know them.

Value creation

- > Have a plan / Know your operation.
- > Budget/Schedule control.
- > KPI's for operational excellence.
- > Challenge the team / Process review.

To be informed

- > Legislation.
- > Contracts.
- > Procedures.
- > Communities.
- > Authorities.
- > Response.

Systems

- > Complete visibility.
- > Integration.
- > Flexibility.

Sectors



Oil & Gas



Power



**Port
Equipment**



**Offshore &
Marine Services**



Rail Projects



**Industrial Projects
& Automotive**



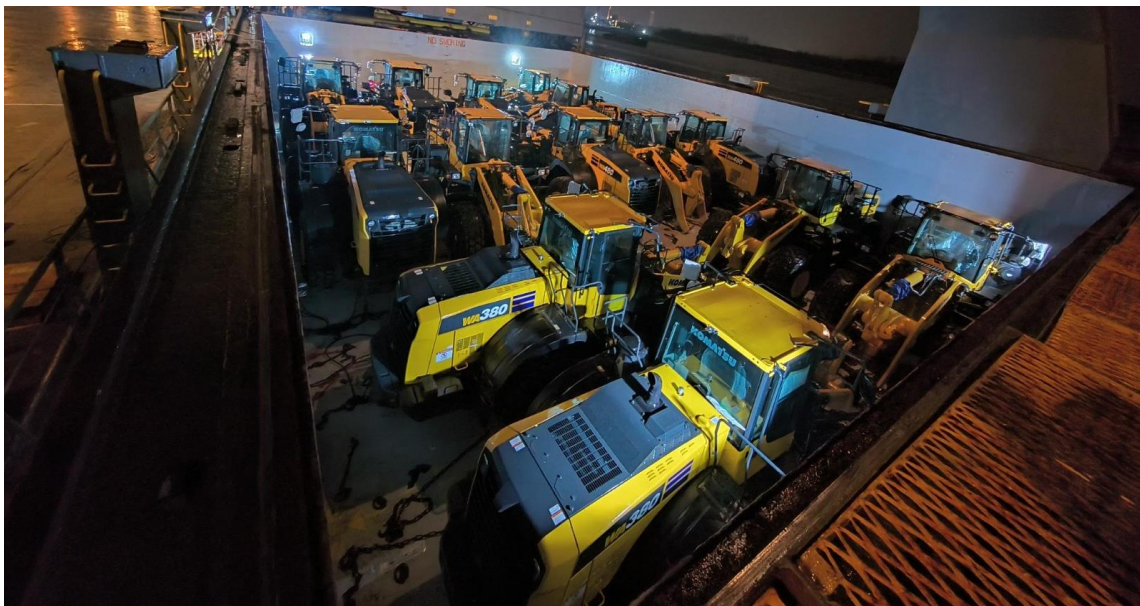
**Renewable
Energies**



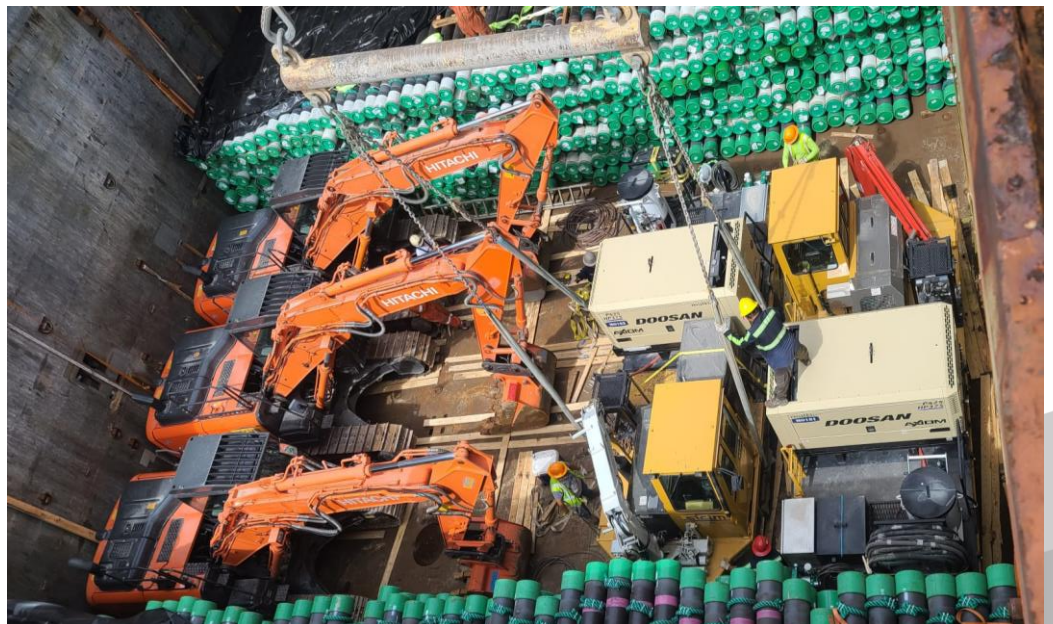
Mining

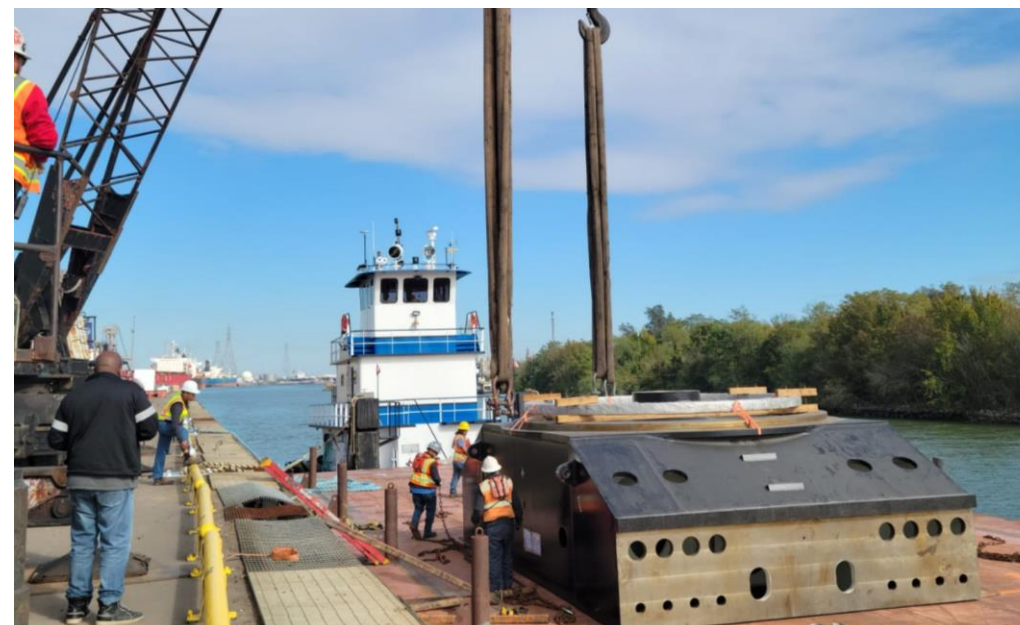
3

2023 – 2024 NPC US EXECUTIONS













www.noatumprojectcargo.com

 **noatum project cargo**